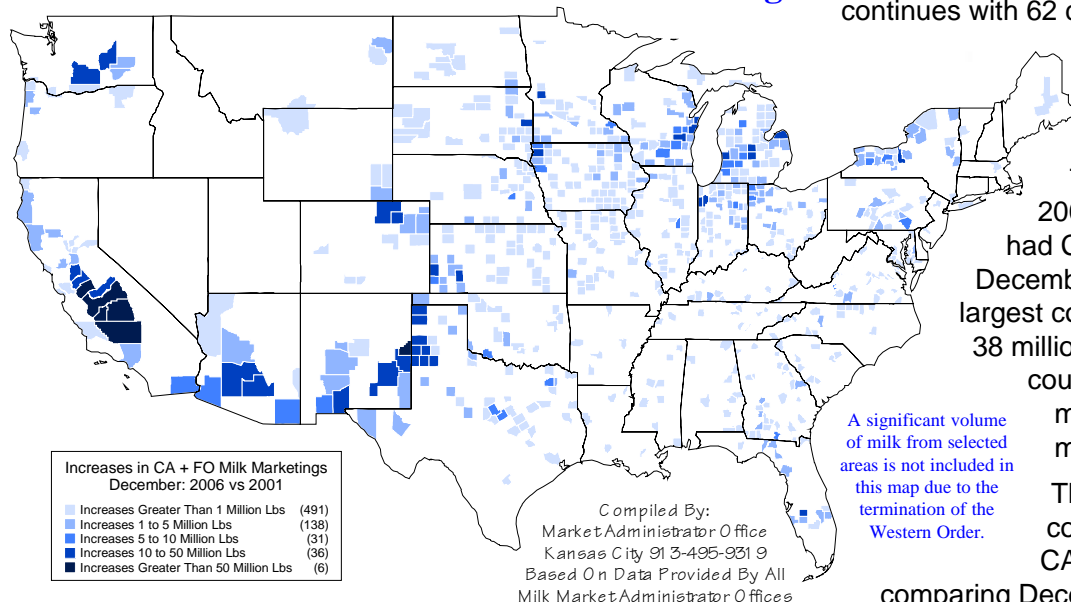


MARKETING SERVICE

B U L L E T I N

California & Federal Order Marketings by County

702 Counties Increased Marketings



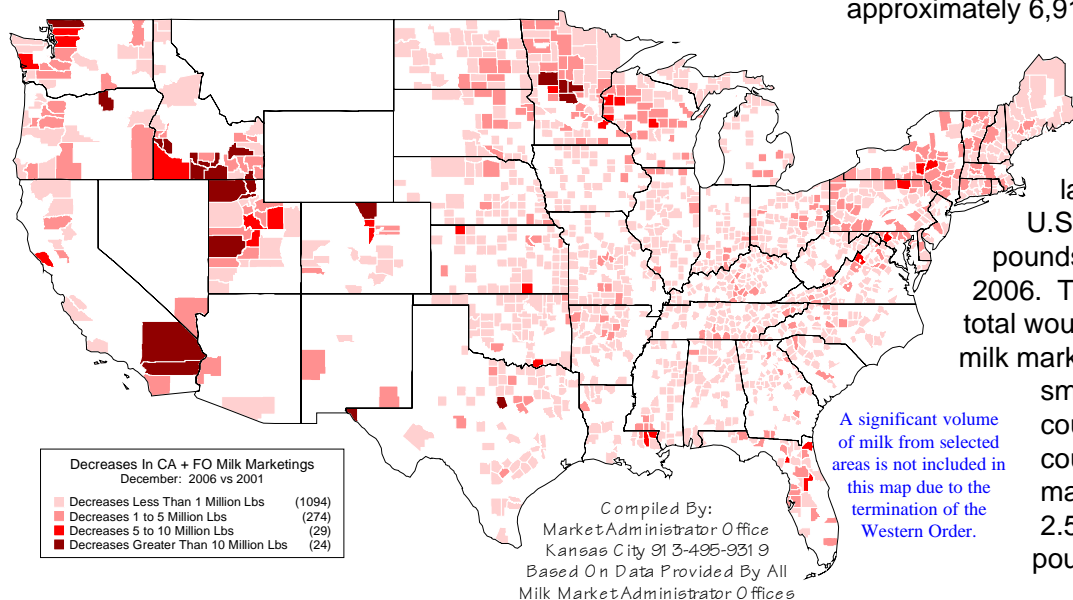
Concentration in the origin of milk marketings continues with 62 counties marketing 50% of the total California & Federal order (CA+FO) milk during December 2006. This is down from 77 counties in December 2001. A total of 1,899 counties had CA+FO milk marketings in December 2006, and each of the 62 largest counties marketed more than 38 million pounds. Conversely, 929 counties (49.2% of the total) marketed less than one million pounds each.

The top map depicts 702 counties with **increased** CA+FO milk marketings, comparing December 2006 with 2001. Marketings from these counties totaled 8.972

billion pounds, with 42 counties increasing marketings by more than 10 million pounds. The map below depicts 1,421 counties with **decreased** marketings - these counties marketed 4.318 billion pounds in December 2006. Milk from all 1,899 counties with CA+FO order marketings totaled 13.290 billion pounds, which represents an **increase** of 0.254 billion pounds (+2.0%) compared with December 2001.

California milk marketings included in this analysis totaled 3.223 billion pounds, or 24.3% of the CA+FO December 2006 total. The magnitude of milk from 15 California counties with the most marketings dwarfs a majority of all other counties combined. Ranking all the counties with CA+FO milk marketings in ascending order would require marketings from 1,678 counties (88.4% of the 1,899 total) to equal the amount from these 15 California counties. Not all of these 1,678 counties would be considered small in terms of milk marketings, since counties up to 11.5

1421 Counties Decreased Marketings



million pounds would be included in this grouping. This would include all counties with approximately 6,915 or fewer dairy cows, assuming production of 19,951 pounds per cow (2006 national average).

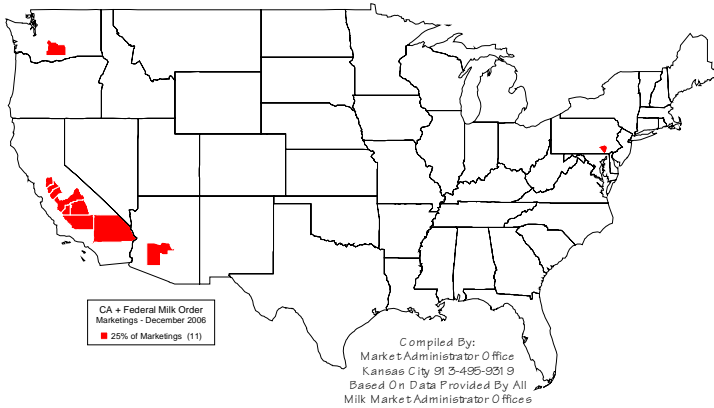
Tulare County (CA), the largest dairy county in the U.S., marketed 843.5 million pounds of milk in December 2006. To equal Tulare County's total would require the combined milk marketings from the smallest 1,258 counties, or all counties with marketings up to 2.551 million pounds.



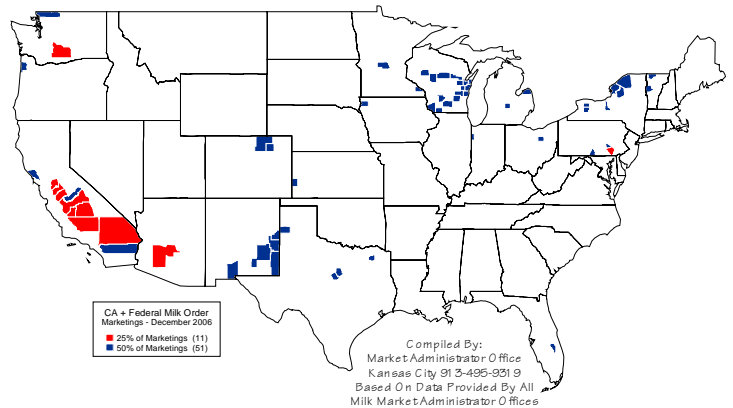
M
A
Y

2
0
0
7

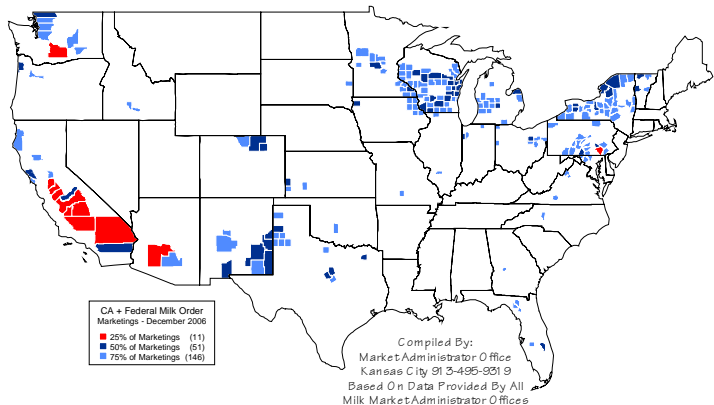
11 Counties Marketed 25% Of All
CA + Federal Order Milk During December 2006



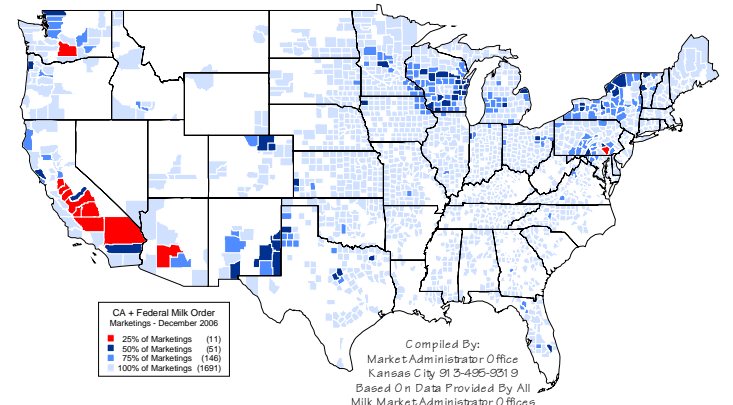
62 Counties Marketed 50% Of All
CA + Federal Order Milk During December 2006



208 Counties Marketed 75% Of All
CA + Federal Order Milk During December 2006



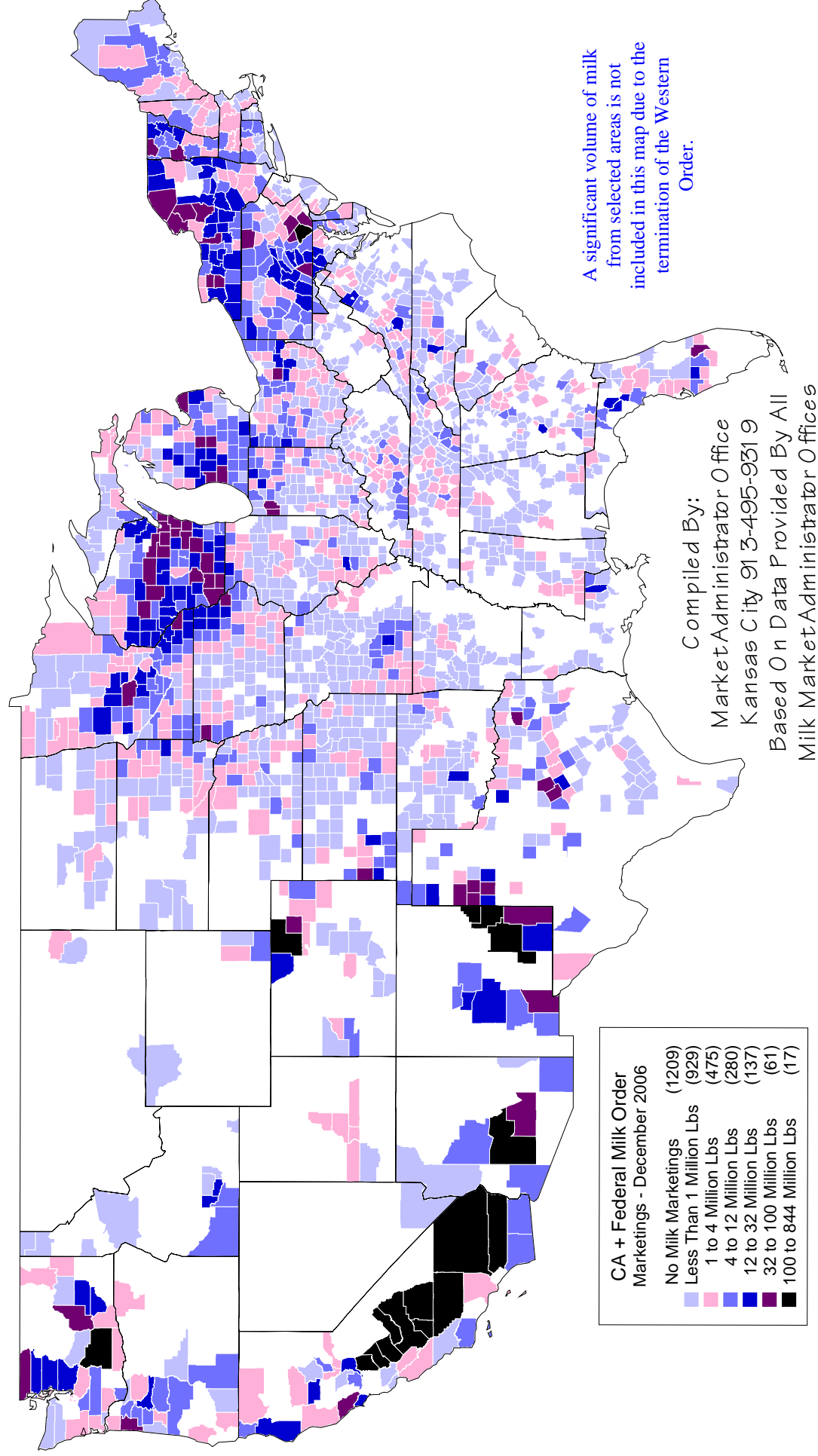
1,899 Counties Marketed 100% Of All
CA + Federal Order Milk During December 2006



Eleven Counties Marketed 25% Of The CA + Federal Order Milk During December 2006

	<u>Dec '06 Mktgs</u>	<u>Dec '01 Mktgs</u>	<u>Percent Change</u>	<u>Dec 2006 As % Of 12/06 Total</u>
Tulare, CA	843,545,566	724,388,981	+16.45	6.35
Merced, CA	431,578,117	371,628,609	+16.13	3.25
Stanislaus, CA	329,345,270	279,529,092	+17.82	2.48
Kings, CA	311,618,139	231,902,354	+34.37	2.34
Kern, CA	310,589,622	136,115,252	+128.18	2.34
Maricopa, AZ	239,120,576	223,859,066	+6.82	1.80
Fresno, CA	221,259,418	150,769,798	+46.75	1.66
San Joaquin, CA	192,622,515	177,844,973	+8.31	1.44
Lancaster, PA	188,077,041	180,460,212	+4.22	1.42
Yakima, WA	172,080,943	127,633,169	+34.82	1.29
San Bernardino, CA	159,754,479	258,333,339	-38.16	1.20
11-County Total	3,399,591,686	2,862,464,845	+18.76	25.58
CA + FO Total	13,289,711,811	13,035,425,848	+1.95	

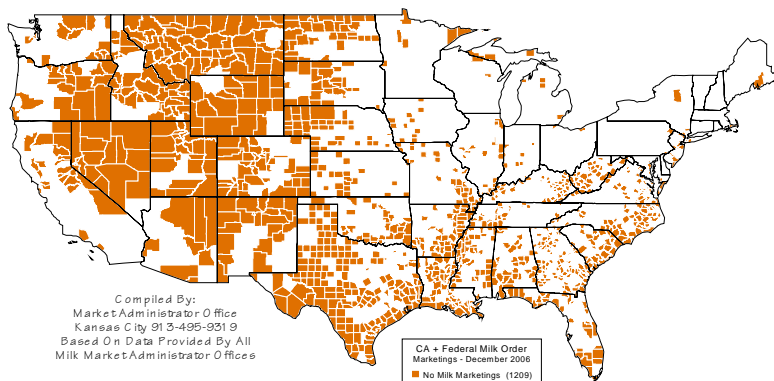
CA + Federal Order Milk Marketings By County - December 2006



Color copies of these maps are available from the Central federal order website at www.fmmcentral.com under "news & publications - marketing service bulletin."

	Statistical Uniform Price		Producer Price Differential		Class I Utilization	
	<u>Apr '07</u>	<u>Mar '07</u>	<u>Apr '07</u>	<u>Mar '07</u>	<u>Apr '07</u>	<u>Mar '07</u>
Northeast	17.02	16.08	0.93	0.99	44.33	47.37
Appalachian	17.41	16.46	-----	-----	66.12	66.89
Florida	18.35	17.57	-----	-----	75.15	78.18
Southeast	17.36	16.54	-----	-----	55.78	58.78
Upper Midwest	16.15	15.14	0.06	0.05	18.87	19.65
Central	15.98	14.94	-0.11	-0.15	39.09	40.18
Mideast	16.09	15.12	0.00	0.03	37.44	40.97
Pacific Northwest	16.24	14.84	0.15	-0.25	32.07	31.80
Southwest	16.97	15.87	0.88	0.78	34.57	35.01
Arizona	16.43	15.12	-----	-----	33.55	34.49

Counties With "NO" CA + Federal Order Milk Marketings
December 2006



The U.S. Department of Agriculture (USDA) prohibits discrimination in all its programs and activities on the basis of race, color, national origin, age, disability, and where applicable, sex, marital status, familial status, parental status, religion, sexual orientation, genetic information, political beliefs, reprisal, or because all or a part of an individual's income is derived from any public assistance program. (Not all prohibited bases apply to all programs.) Persons with disabilities who require alternative means for communication of program information (Braille, large print, audiotape, etc.) should contact USDA's TARGET Center at (202) 720-2600 (voice and TDD).

To file a complaint of discrimination write to USDA, Director, Office of Civil Rights, 1400 Independence Avenue, S.W., Washington, D.C. 20250-9410 or call (800) 795-3272 (voice) or (202) 720-6382 (TDD). USDA is an equal opportunity provider and employer.



FIRST CLASS
U.S. POSTAGE
PAID
SHAWNEE MISSION, KS
PERMIT NO. 377

FEDERAL MILK MARKET ADMINISTRATOR
P.O. BOX 14650
SHAWNEE MISSION, KANSAS 66285-4650

Website: www.fmmacentral.com
E-mail: market.administrator@fmmacentral.com
Phone: 913-495-9300

FIRST CLASS