

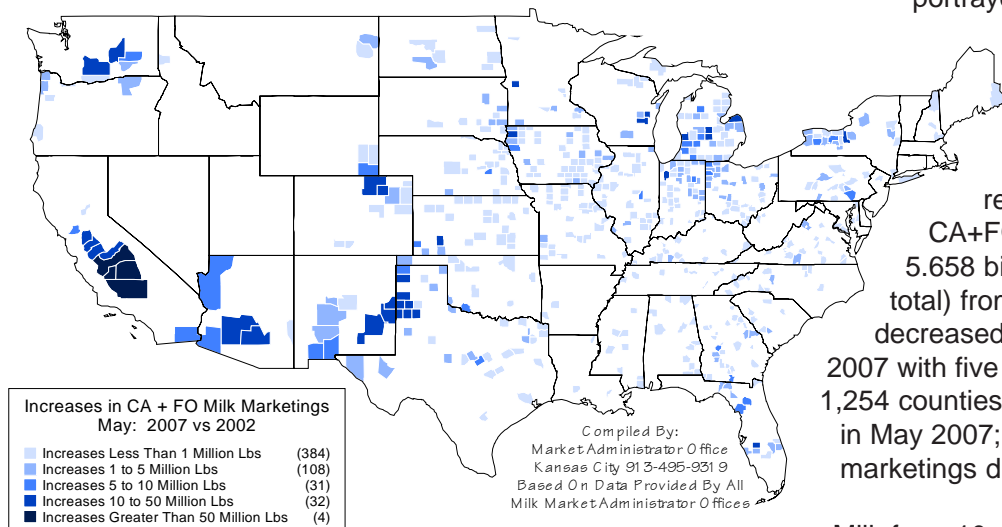
MARKETING SERVICE

B U L L E T I N

California & Federal Order Milk Marketing Data*

This Bulletin details California & Federal order milk marketings by county for May 2007 and includes comparisons with May 2002. The top map on this page depicts counties with CA+FO marketing increases,

559 Counties Increased Marketings

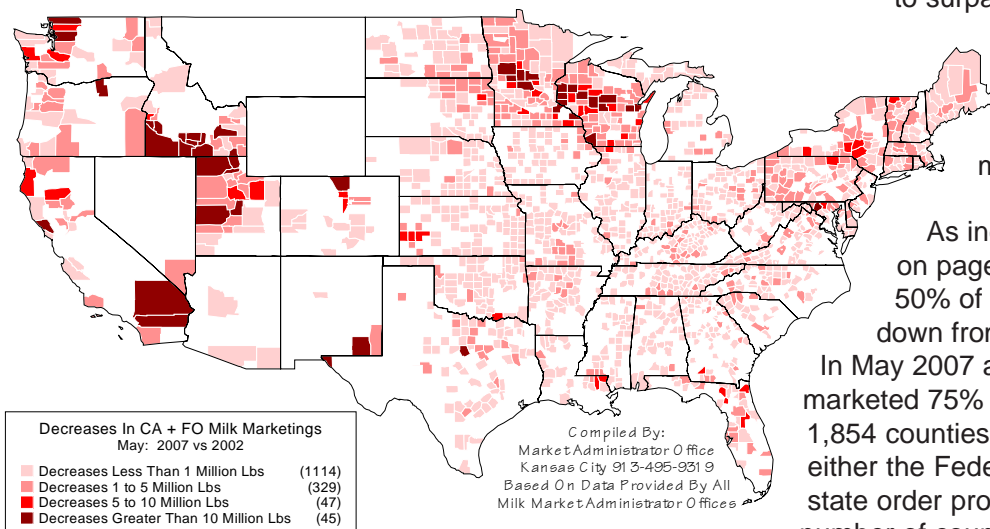


while counties that reported decreased marketings are portrayed in the lower map. Milk marketings from 559 counties with increases totaled 7.737 billion pounds during May 2007.

These marketings represents 57.76% of the CA+FO total. This compares to 5.658 billion pounds (42.24% of the total) from 1,535 counties that decreased marketings, comparing May 2007 with five years earlier. There were 1,254 counties with no CA+FO marketings in May 2007; 240 of these counties had marketings during May 2002.

Milk from 10 counties accounted for 25% of all CA+FO marketings during May 2007 -- down from 14 counties in May 2002. Seven of the top 10 counties are located in California, with Tulare (CA) county's 890.5 million pounds leading the way. Marketings from this county represent 6.65% of the CA+FO May 2007 total. To put this in perspective, it requires the combined marketings of 1,244 counties with the lowest marketings to surpass the Tulare county total.

1,535 Counties Decreased Marketings



The 10 counties that represent 25% of the CA+FO total for May 2007 are depicted in the top left map on page two.

As indicated by the top right map on page two, 58 counties marketed 50% of the May 2007 CA+FO total, down from 76 counties in May 2002.

In May 2007 a total of 206 counties marketed 75% of the CA+FO total, while 1,854 counties had milk marketings under either the Federal order or California state order programs. The comparable number of counties for May 2002 were

250 and 2,059, respectively. The counties representing 75% and 100% of CA+FO milk marketings are depicted in the lower two maps on page two. The map on page three details CA+FO milk marketings by selected size ranges for May 2007, while counties with no CA+FO milk marketings are depicted in the map on the last page of this bulletin.

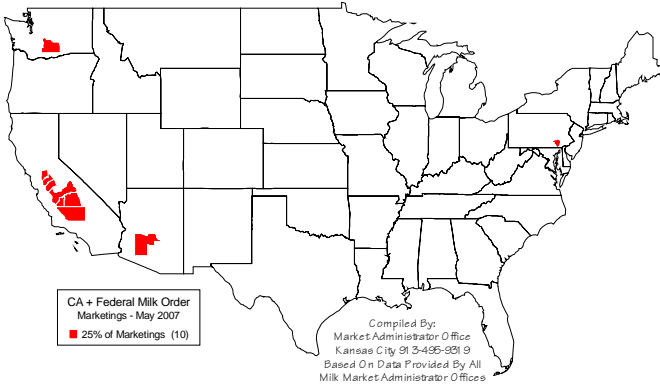
* A significant volume of milk from selected areas is not included in this data due to the termination of the Western Order No. 135.

S E P T E M B E R

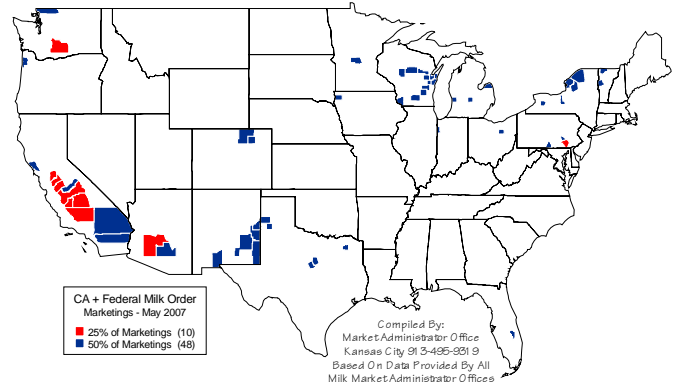
2 0 0 7



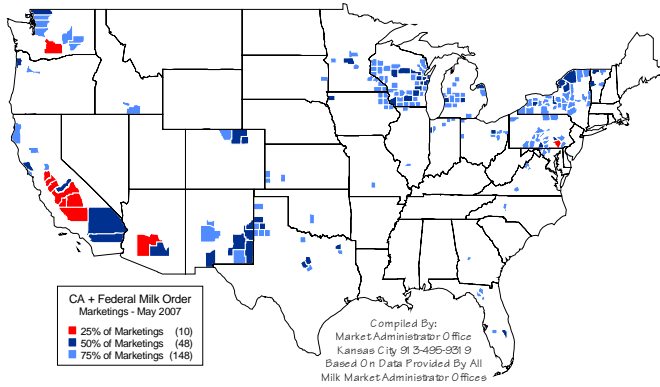
10 Counties Marketed 25% Of All
CA + Federal Order Milk During May 2007



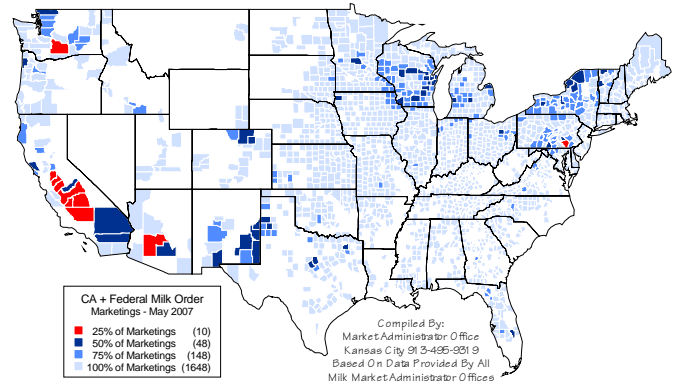
58 Counties Marketed 50% Of All
CA + Federal Order Milk During May 2007



206 Counties Marketed 75% Of All
CA + Federal Order Milk During May 2007



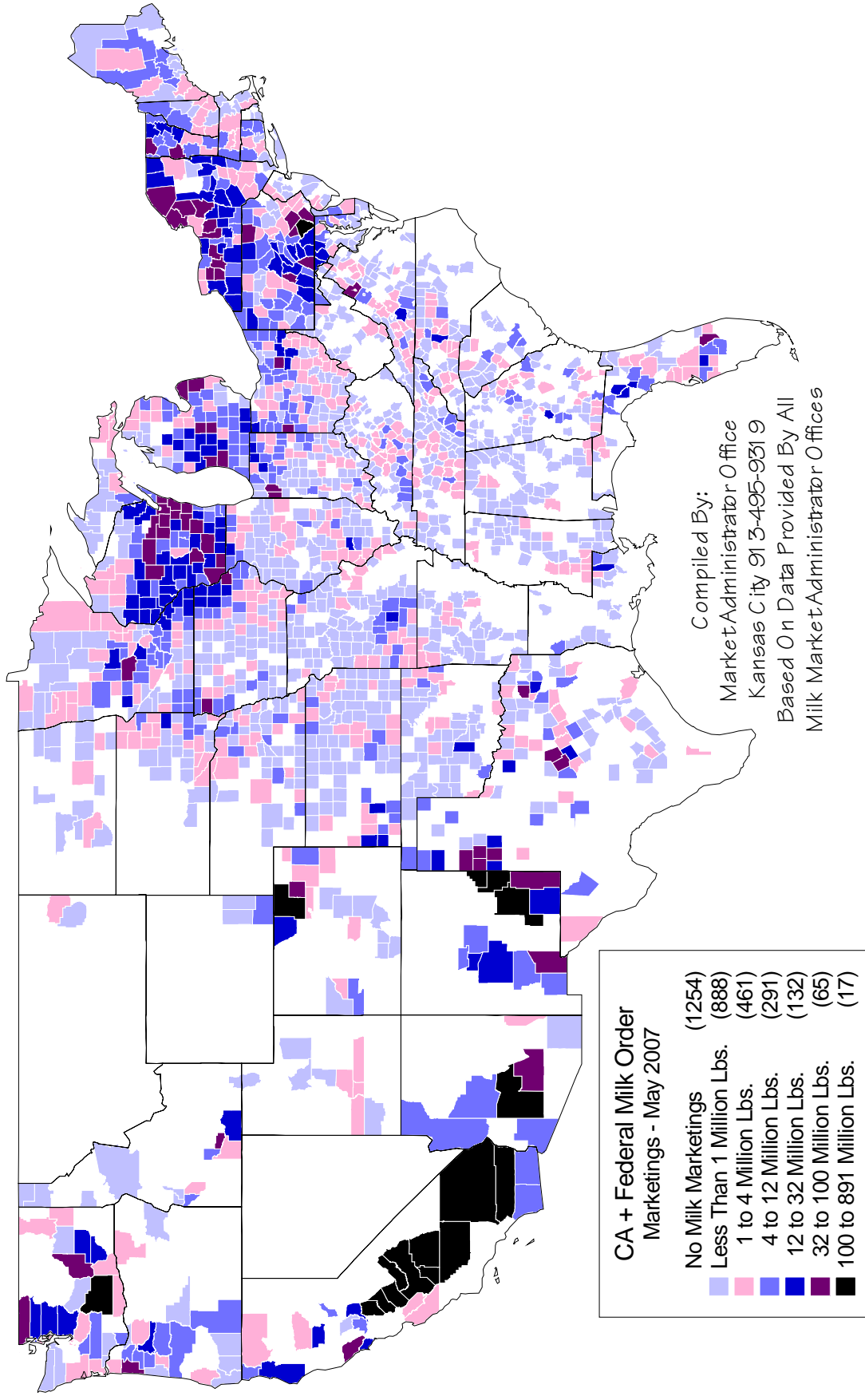
1,854 Counties Marketed 100% Of All
CA + Federal Order Milk During May 2007



Ten Counties Marketed 25% Of The CA + Federal Order Milk During May 2007

	<u>May 2007 Mktgs</u>	<u>May 2002 Mktgs</u>	<u>Percent Change</u>	<u>Percentage of May 2007 Total</u>
1. Tulare, CA	890,476,707	790,805,063	+12.60	6.65
2. Merced, CA	450,793,146	407,447,202	+10.64	3.37
3. Stanislaus, CA	331,367,338	307,349,934	+7.81	2.47
4. Kings, CA	327,311,696	248,713,501	+31.60	2.44
5. Kern, CA	326,495,592	151,605,986	+115.36	2.44
6. Maricopa, Az	273,371,446	259,773,885	+5.23	2.04
7. Fresno, CA	231,819,288	161,595,049	+43.46	1.73
8. San Joaquin, CA	205,386,968	184,427,186	+11.36	1.53
9. Lancaster, PA	197,932,193	192,495,359	+2.82	1.48
10. Yakima, WA	185,644,540	142,997,699	+29.82	1.39
10-County Total	3,420,598,914	2,847,210,864	+20.14	25.54
CA + FO Total	13,394,992,870	14,152,191,197	-5.35	

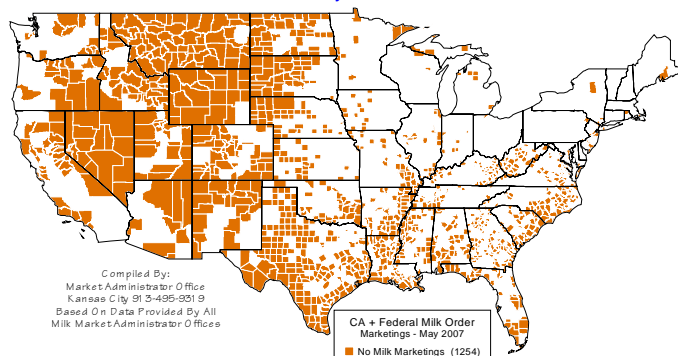
CA + Federal Order Milk Marketings By County - May 2007



Color copies of these maps are available from the Central federal order website at www.fmmcentral.com under "news & publications - marketing service bulletin."

	Statistical Uniform Price		Producer Price Differential		Class I Utilization	
	<u>Aug '07</u>	<u>Jul '07</u>	<u>Aug '07</u>	<u>Jul '07</u>	<u>Aug '07</u>	<u>Jul '07</u>
Northeast	23.14	22.94	3.31	1.56	43.83	42.02
Appalachian	24.16	23.28	-----	-----	73.27	68.08
Florida	25.24	24.22	-----	-----	86.72	80.06
Southeast	23.87	23.29	-----	-----	70.56	65.80
Upper Midwest	20.61	21.65	0.78	0.27	16.56	14.27
Central	21.93	21.90	2.10	0.52	39.02	33.61
Mideast	22.19	21.97	2.36	0.59	44.63	33.96
Pacific Northwest	21.84	21.98	2.01	0.60	31.50	30.10
Southwest	22.76	22.69	2.93	1.31	44.65	29.90
Arizona	22.22	22.09	-----	-----	41.01	34.41

Counties With "NO" CA + Federal Order Milk Marketings
May 2007



The U.S. Department of Agriculture (USDA) prohibits discrimination in all its programs and activities on the basis of race, color, national origin, age, disability, and where applicable, sex, marital status, familial status, parental status, religion, sexual orientation, genetic information, political beliefs, reprisal, or because all or a part of an individual's income is derived from any public assistance program. (Not all prohibited bases apply to all programs.) Persons with disabilities who require alternative means for communication of program information (Braille, large print, audiotape, etc.) should contact USDA's TARGET Center at (202) 720-2600 (voice and TDD).

To file a complaint of discrimination write to USDA, Director, Office of Civil Rights, 1400 Independence Avenue, S.W., Washington, D.C. 20250-9410 or call (800) 795-3272 (voice) or (202) 720-6382 (TDD). USDA is an equal opportunity provider and employer.



**United States
Department of
Agriculture**

FEDERAL MILK MARKET ADMINISTRATOR
P.O. BOX 14650
SHAWNEE MISSION, KANSAS 66285-4650

Website: www.fmmacentral.com
E-mail: market.administrator@fmmacentral.com
Phone: 913-495-9300

FIRST CLASS
U.S. POSTAGE
PAID
SHAWNEE MISSION, KS
PERMIT NO. 377

FIRST CLASS