

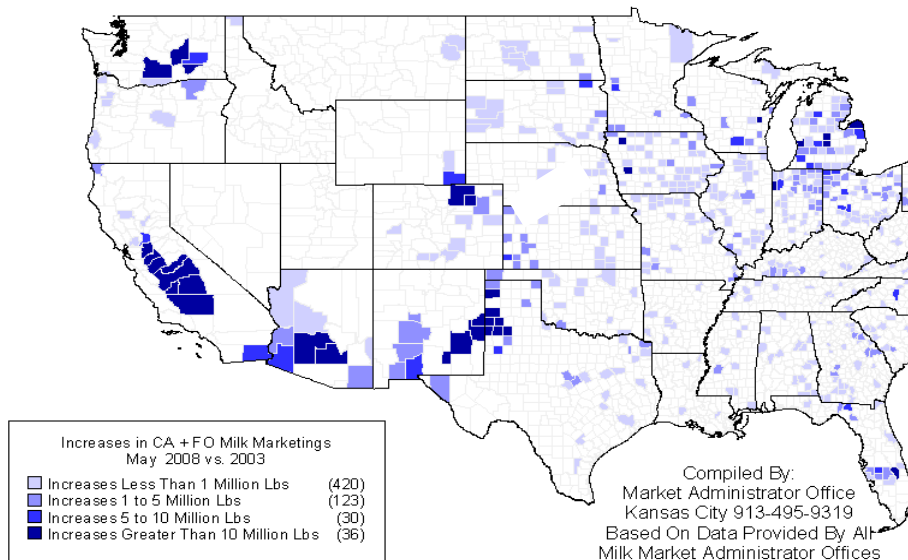
MARKETING SERVICE

B U L L E T I N

California & Federal Order Milk Marketing Data*

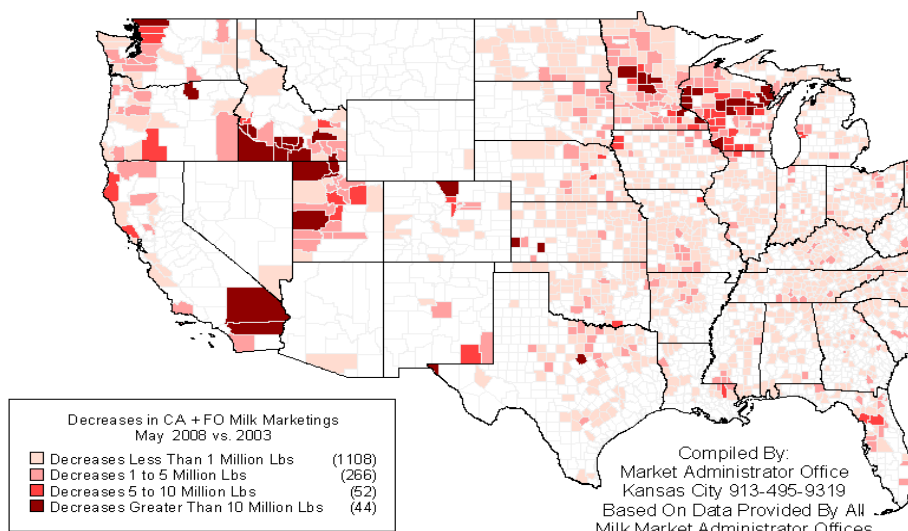
This Bulletin details California & Federal order milk marketings by county for May 2008 and includes comparisons with May 2003. The top map on this page depicts counties with CA+FO marketing increases, while counties that reported decreased marketings are portrayed in the lower map. Milk marketings from 609 counties with increases totaled 8.370 billion pounds during May 2008. These marketings represent 61.84% of the CA+FO total. This compares to 5.164 billion pounds (38.16% of the total) from 1,470 counties that decreased marketings, comparing May 2008 with five years earlier. There were 1,257 counties with no CA+FO marketings in May 2008; 226 of these counties had marketings during May 2003.

609 Counties Increased Marketings



25% of all CA+FO marketings during May 2008 -- down from 13 counties in May 2003. Seven of the top nine counties are located in California, with Tulare (CA) county's 919.5 million pounds leading the way. Marketings from this county represent 6.79% of the CA+FO May 2008 total. To put this in perspective, it requires the combined marketings of 1,265 counties with the lowest marketings to surpass the Tulare county total. The nine counties that represent 25% of the CA+FO total for May 2008 are depicted in the top left map on page two.

1,470 Counties Decreased Marketings



As indicated by the top right map on page two, 54 counties marketed 50% of the May 2008 CA+FO total, down from 74 counties in May 2003. In May 2008 a total of 196 counties marketed 75% of the CA+FO total, while 1,853 counties had milk marketings under either the Federal order or California state order programs. The comparable number of counties for May 2003 were 245 and 2,030, respectively. The counties representing 75% and 100% of CA+FO milk marketings are depicted in the lower two maps on page two. The map on page three details CA+FO milk marketings by selected size ranges for May 2008, while counties with no CA+FO milk marketings are depicted in the map on the last page of this bulletin.

* A significant volume of milk from selected areas is not included in this data due to the termination of the Western Order No. 135.

OCTOBER

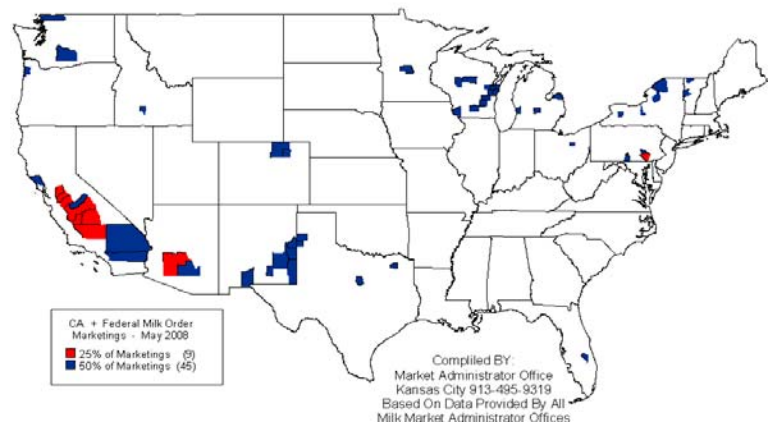
2008



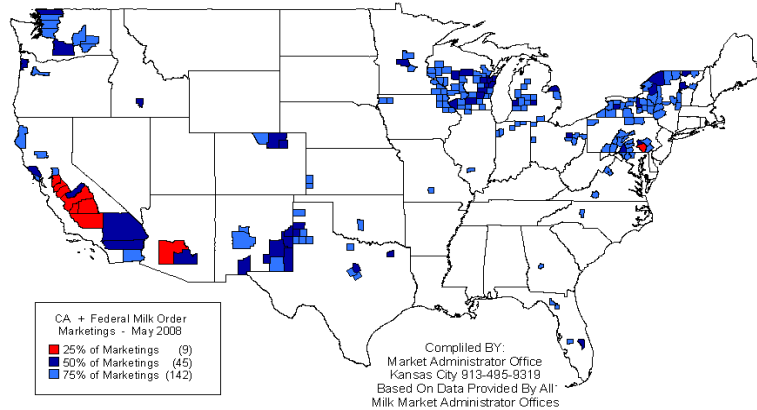
**9 Counties Marketed 25% of All
CA + Federal Order Milk During May 2008**



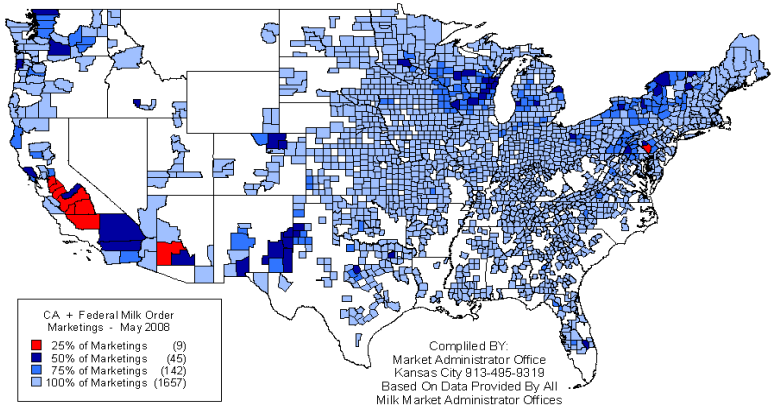
**54 Counties Marketed 50% Of All
CA + Federal Order Milk During May 2008**



**196 Counties Marketed 75% Of All
CA + Federal Order Milk During May 2008**



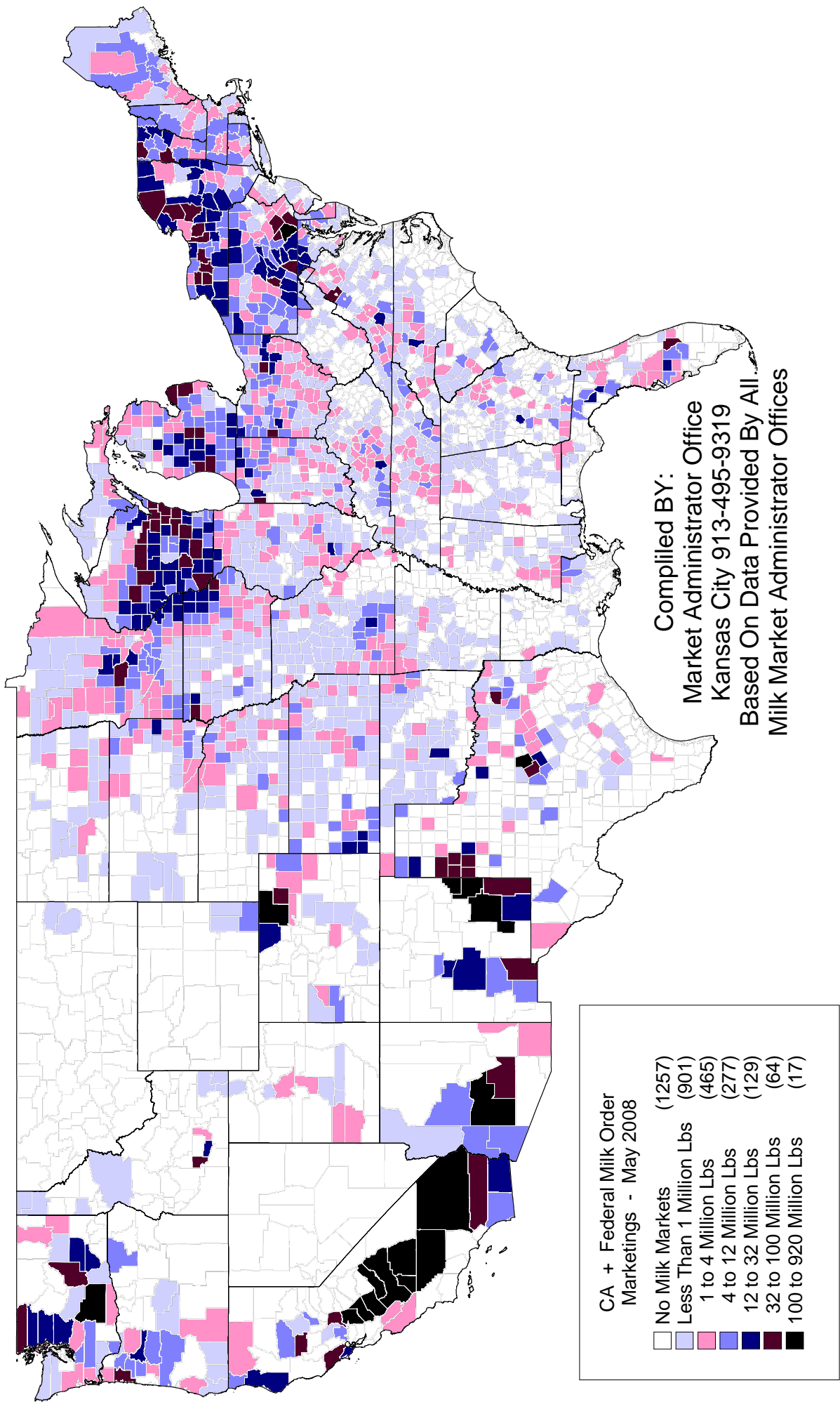
**1,853 Counties Marketed 100% Of All
CA + Federal Order Milk During May 2008**



Nine Counties Marketed 25% Of The CA + Federal Order Milk During May 2008

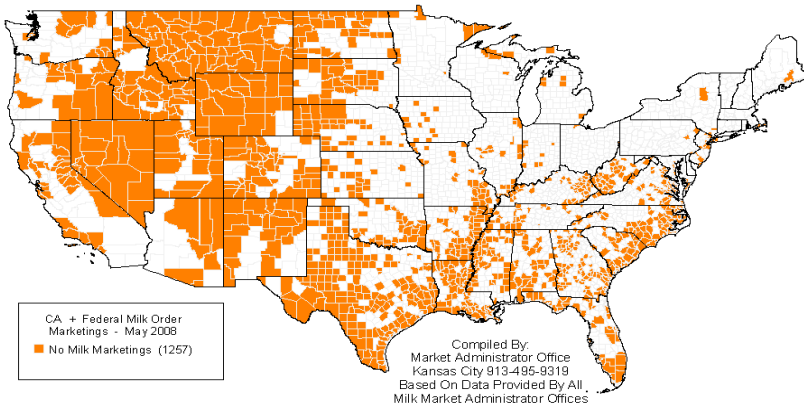
	<u>May 2008 Mktgs</u>	<u>May 2003 Mktgs</u>	<u>Percent Change</u>	<u>Percentage of May 2008 Total</u>
1. Tulare, CA	919,528,636	801,299,755	+14.75	6.79
2. Merced, CA	486,537,452	423,868,468	+14.79	3.59
3. Stanislaus, CA	352,857,317	310,868,432	+13.51	2.61
4. Kings, CA	350,031,935	254,588,342	+37.49	2.59
5. Kern, CA	327,464,286	172,627,329	+89.69	2.42
6. Maricopa, Az	303,812,198	249,786,979	+21.63	2.24
7. Fresno, CA	236,334,295	165,772,391	+42.57	1.75
8. San Joaquin, CA	211,940,691	185,181,552	+14.45	1.57
9. Lancaster, PA	208,016,515	194,456,854	+6.97	1.54
Nine-County Total	3,396,523,325	2,758,450,102	+23.13	25.10
CA + FO Total	13,534,062,294	14,008,852,615	-3.39	

CA + Federal Order Milk Marketings By County - May 2008



	Statistical Uniform Price		Producer Price Differential		Class I Utilization	
	<u>Sep '08</u>	<u>Aug '08</u>	<u>Sep '08</u>	<u>Aug '08</u>	<u>Sep '08</u>	<u>Aug '08</u>
Northeast	18.90	19.50	2.62	2.18	46.50	42.14
Appalachian	20.23	20.72	-----	-----	72.36	69.48
Florida	22.39	23.01	-----	-----	86.75	84.90
Southeast	20.63	21.25	-----	-----	74.55	72.09
Upper Midwest	16.85	17.81	0.57	0.49	14.91	13.42
Central	17.44	18.32	1.16	1.00	35.41	33.58
Mideast	18.05	18.70	1.77	1.38	45.20	40.51
Pacific Northwest	17.07	18.03	0.79	0.71	30.11	28.06
Southwest	18.46	19.32	2.18	2.00	39.79	37.04
Arizona	17.66	18.50	-----	-----	38.08	36.70

Counties With "NO" CA + Federal Order Milk Marketings
May 2008



The U.S. Department of Agriculture (USDA) prohibits discrimination in all its programs and activities on the basis of race, color, national origin, age, disability, and where applicable, sex, marital status, familial status, parental status, religion, sexual orientation, genetic information, political beliefs, reprisal, or because all or a part of an individual's income is derived from any public assistance program. (Not all prohibited bases apply to all programs.) Persons with disabilities who require alternative means for communication of program information (Braille, large print, audiotape, etc.) should contact USDA's TARGET Center at (202) 720-2600 (voice and TDD).

To file a complaint of discrimination write to USDA, Director, Office of Civil Rights, 1400 Independence Avenue, S.W., Washington, D.C. 20250-9410 or call (800) 795-3272 (voice) or (202) 720-6382 (TDD). USDA is an equal opportunity provider and employer.



**United States
Department of
Agriculture**

FEDERAL MILK MARKET ADMINISTRATOR
P.O. BOX 14650
SHAWNEE MISSION, KANSAS 66285-4650

Website: www.fmmacentral.com
E-mail: market.administrator@fmmacentral.com
Phone: 913-495-9300

FIRST CLASS
U.S. POSTAGE
PAID
SHAWNEE MISSION, KS
PERMIT NO. 377

FIRST CLASS