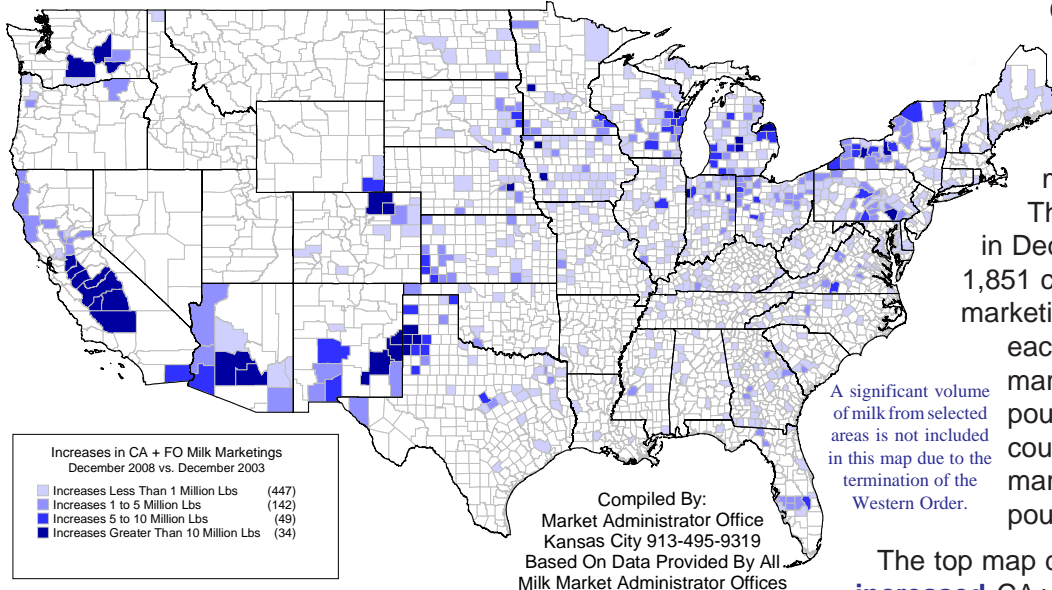


MARKETING SERVICE

B U L L E T I N

California & Federal Order Marketings by County

672 Counties Increased Marketings



Increases in CA + FO Milk Marketings
December 2008 vs. December 2003

- Increases Less Than 1 Million Lbs (447)
- Increases 1 to 5 Million Lbs (142)
- Increases 5 to 10 Million Lbs (49)
- Increases Greater Than 10 Million Lbs (34)

Compiled By:
Market Administrator Office
Kansas City 913-495-9319
Based On Data Provided By All
Milk Market Administrator Offices

A significant volume
of milk from selected
areas is not included
in this map due to the
termination of the
Western Order.

Concentration in the origin of milk marketings continues with 57 counties marketing 50% of the total California & Federal order (CA+FO) milk during December 2008.

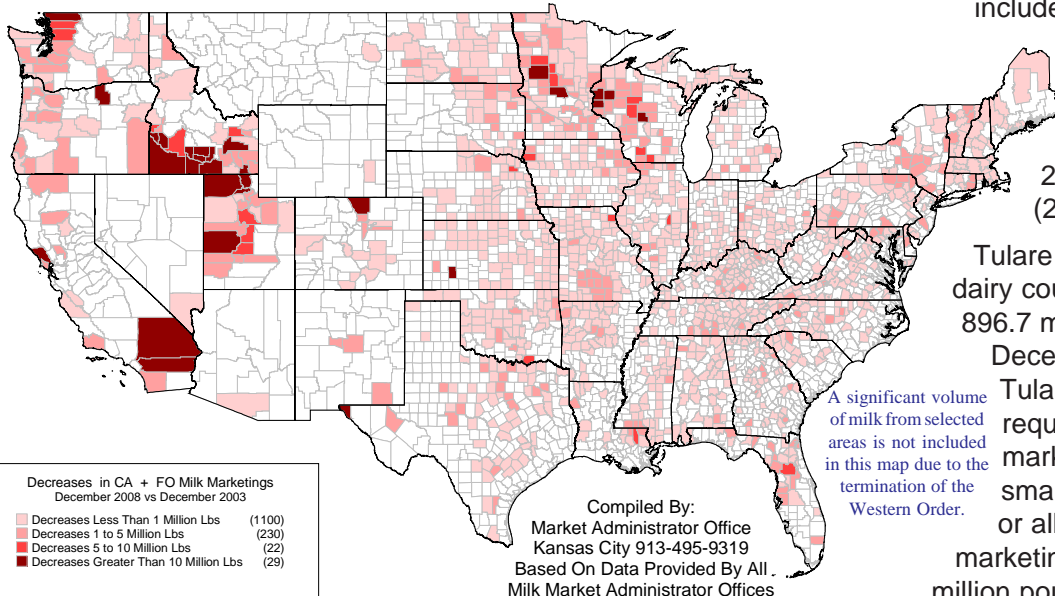
This is down from 71 counties in December 2003. A total of 1,851 counties had CA+FO milk marketings in December 2008, and each of the 57 largest counties marketed more than 44.4 million pounds. Conversely, 928 counties (50.1% of the total) marketed less than one million pounds each.

The top map depicts 672 counties with **increased** CA+FO milk marketings,

comparing December 2008 with 2003. Marketings from these counties totaled 9.628 billion pounds, with 34 counties increasing marketings by more than 10 million pounds. The map below depicts 1,381 counties with **decreased** marketings - these counties marketed 4.004 billion pounds in December 2008. Milk from all 1,851 counties with CA+FO order marketings totaled 13.632 billion pounds, an **increase** of 0.333 billion pounds (+2.5%) compared with December 2003.

California milk marketings included in this analysis totaled 3.376 billion pounds, or 24.8% of the CA+FO December 2008 total. The magnitude of milk from 15 California counties with the most marketings dwarfs a majority of all other counties combined. Ranking all the counties with CA+FO milk marketings in ascending order would require marketings from 1,651 counties (89.2% of the 1,851 total) to equal the amount from these 15 California counties (3.323 billion pounds). Not all of these 1,651 counties would be considered small in terms of

1381 Counties Decreased Marketings



Decreases in CA + FO Milk Marketings
December 2008 vs December 2003

- Decreases Less Than 1 Million Lbs (1100)
- Decreases 1 to 5 Million Lbs (230)
- Decreases 5 to 10 Million Lbs (22)
- Decreases Greater Than 10 Million Lbs (29)

Compiled By:
Market Administrator Office
Kansas City 913-495-9319
Based On Data Provided By All
Milk Market Administrator Offices

A significant volume
of milk from selected
areas is not included
in this map due to the
termination of the
Western Order.

milk marketings, since counties up to 13.7 million pounds would be included in this grouping. This would include all counties with approximately 8,060 or fewer dairy cows, assuming production of 20,396 pounds per cow (2008 national average).

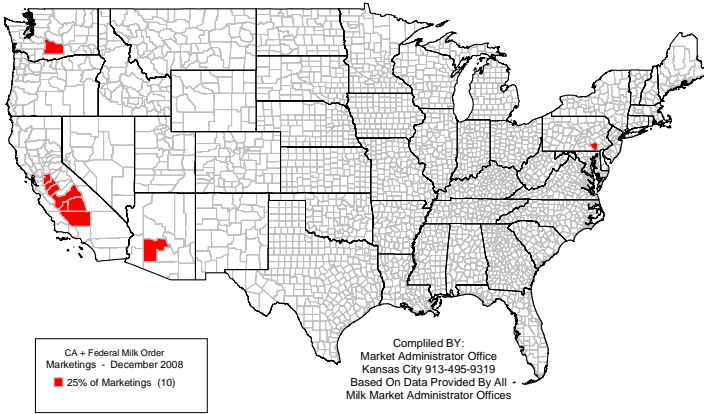
Tulare County (CA), the largest dairy county in the U.S., marketed 896.7 million pounds of milk in December 2008. To equal Tulare County's total would require the combined milk marketings from the smallest 1,269 counties, or all counties with marketings up to 2.861 million pounds.



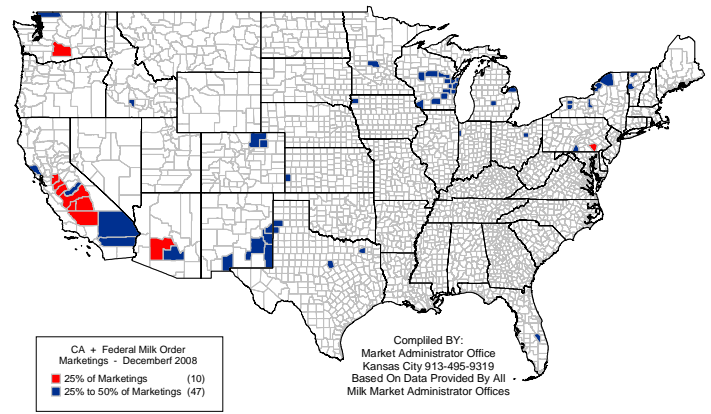
A
P
R
I
L

2
0
0
9

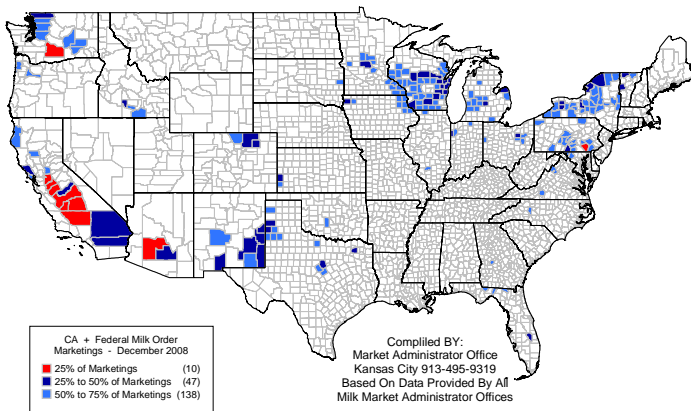
**10 Counties Marketed 25% of All
CA + Federal Order Milk During December 2008**



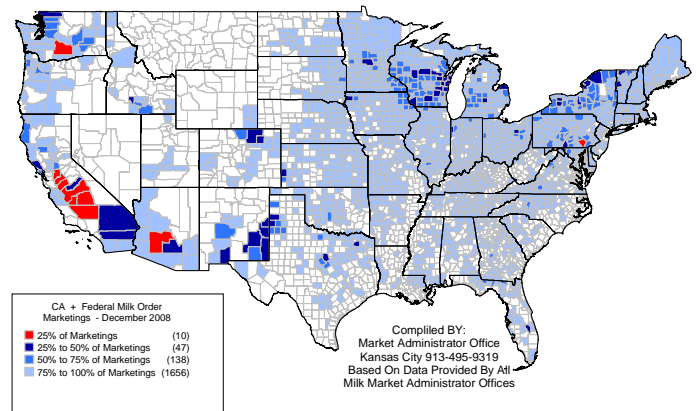
**57 Counties Marketed 50% Of All
CA + Federal Order Milk During December 2008**



**195 Counties Marketed 75% Of All
CA + Federal Order Milk During December 2008**



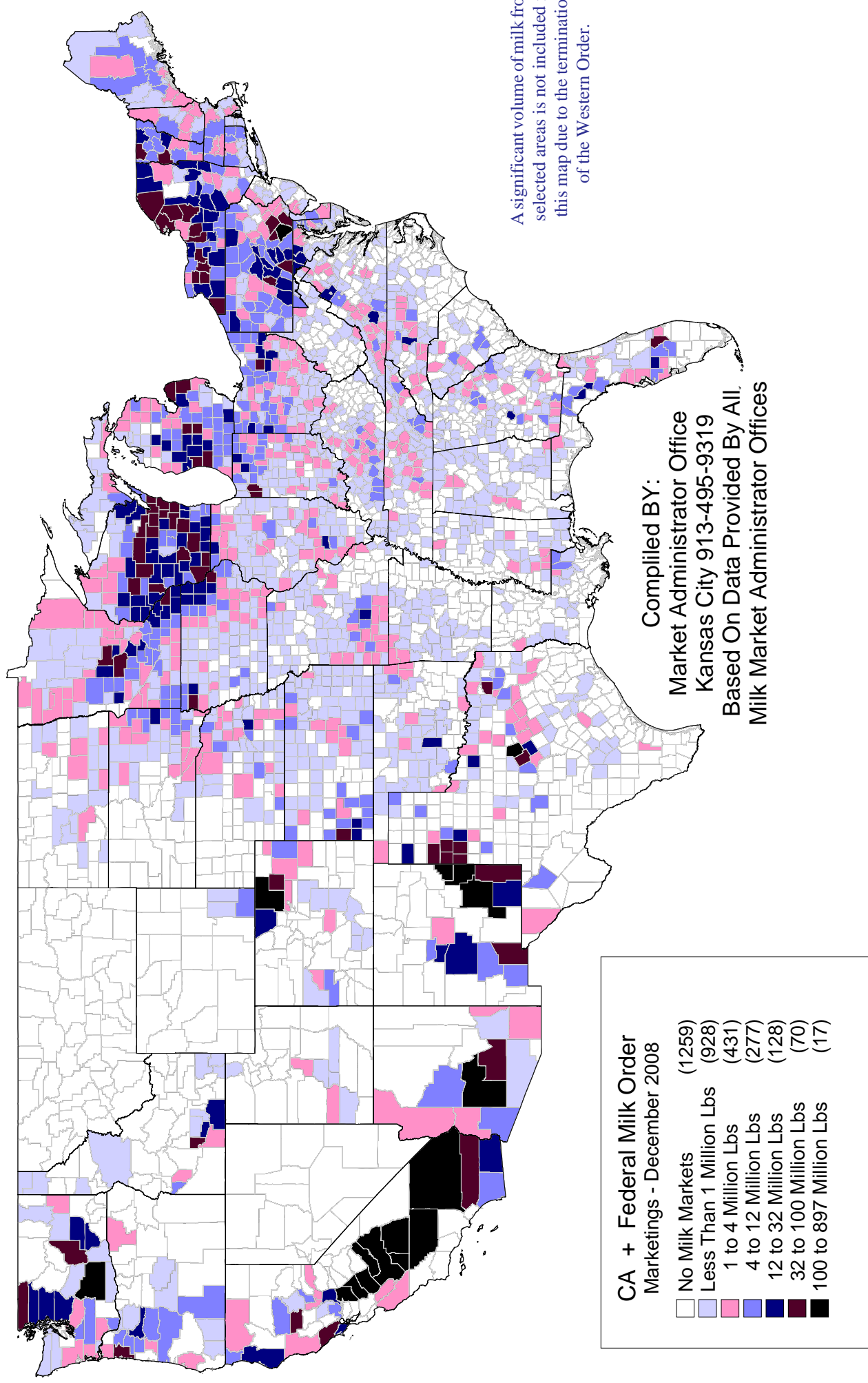
**1851 Counties Marketed 100% Of All
CA + Federal Order Milk During December 2008**



**Ten Counties Marketed 25% Of The CA + Federal Order Milk
During December 2008**

	<u>Dec '08 Mktgs</u>	<u>Dec '03 Mktgs</u>	<u>Percent Change</u>	<u>Dec 2008 As % Of 12/08 Total</u>
Tulare, CA	896,684,807	775,235,038	+15.67	6.58
Merced, CA	465,986,992	398,202,021	+17.02	3.42
Kings, CA	337,967,460	241,398,907	+40.00	2.48
Kern, CA	335,645,457	182,711,860	+83.70	2.46
Stanislaus, CA	327,655,516	295,093,195	+11.03	2.40
Maricopa, AZ	276,158,165	221,666,675	+24.58	2.03
Fresno, CA	226,186,616	166,460,987	+35.88	1.66
San Joaquin, CA	204,787,390	178,361,929	+14.82	1.50
Lancaster, PA	195,792,639	176,549,112	+10.90	1.44
Yakima, WA	181,375,251	149,782,189	+21.09	1.33
10-County Total	3,448,240,293	2,785,461,913	+23.79	25.30
CA + FO Total	13,631,974,606	13,298,618,685	+2.51	

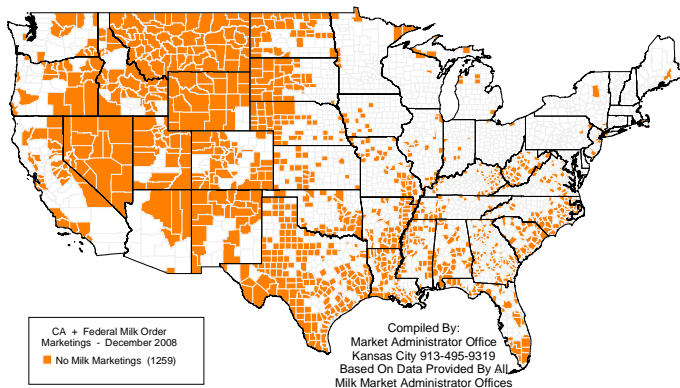
CA + Federal Order Milk Marketings By County - December 2008



Color copies of these maps are available from the Central federal order website at www.fmmcentral.com under "news & publications - marketing service bulletin."

	Statistical Uniform Price		Producer Price Differential		Class I Utilization	
	Mar '09	Feb '09	Mar '09	Feb '09	Mar '09	Feb '09
Northeast	11.56	11.75	1.12	2.44	43.11	42.99
Appalachian	12.29	12.98	-----	-----	69.60	69.00
Florida	14.19	15.02	-----	-----	83.89	81.37
Southeast	12.47	13.22	-----	-----	60.71	67.93
Upper Midwest	10.57	9.82	0.13	0.51	14.07	14.32
Central	10.44	10.38	0.00	1.07	35.10	31.86
Mideast	10.73	10.83	0.29	1.52	40.80	42.42
Pacific Northwest	10.48	10.31	0.04	1.00	31.07	28.54
Southwest	11.45	11.31	1.01	2.00	53.61	34.36
Arizona	10.63	10.69	-----	-----	32.00	33.21

Counties With "NO" CA + Federal Order Milk Marketings
December 2008



The U.S. Department of Agriculture (USDA) prohibits discrimination in all its programs and activities on the basis of race, color, national origin, age, disability, and where applicable, sex, marital status, familial status, parental status, religion, sexual orientation, genetic information, political beliefs, reprisal, or because all or a part of an individual's income is derived from any public assistance program. (Not all prohibited bases apply to all programs.) Persons with disabilities who require alternative means for communication of program information (Braille, large print, audiotape, etc.) should contact USDA's TARGET Center at (202) 720-2600 (voice and TDD).

To file a complaint of discrimination write to USDA, Director, Office of Civil Rights, 1400 Independence Avenue, S.W., Washington, D.C. 20250-9410 or call (800) 795-3272 (voice) or (202) 720-6382 (TDD). USDA is an equal opportunity provider and employer.



FEDERAL MILK MARKET ADMINISTRATOR
P.O. BOX 14650
SHAWNEE MISSION, KANSAS 66285-4650

Website: www.fmmacentral.com
E-mail: market.administrator@fmmacentral.com
Phone: 913-495-9300

FIRST CLASS
U.S. POSTAGE
PAID
SHAWNEE MISSION, KS
PERMIT NO. 377

FIRST CLASS