

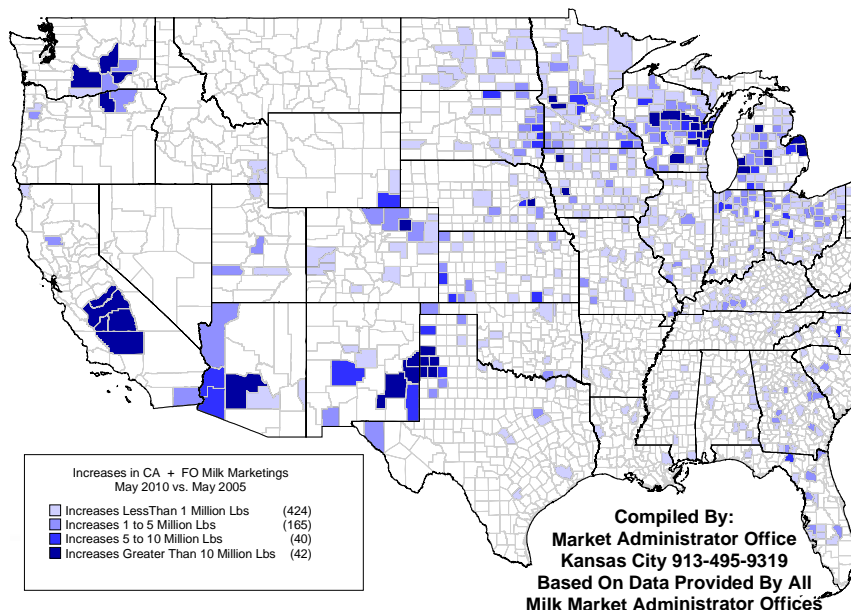
MARKETING SERVICE

B U L L E T I N

California & Federal Order Milk Marketing Data*

This Bulletin details California & Federal order milk marketings by county for May 2010 and includes comparisons with May 2005. The top map on this page depicts counties with CA+FO marketing increases compared with five years earlier, while counties that reported decreased marketings are portrayed in the lower map.

671 Counties Increased Marketings



compared with five years earlier, while counties that reported decreased marketings are portrayed in the lower map.

Milk marketings from 671 counties with increases totaled 10.005 billion pounds during May 2010.

These marketings represent 67.89% of the CA+FO total.

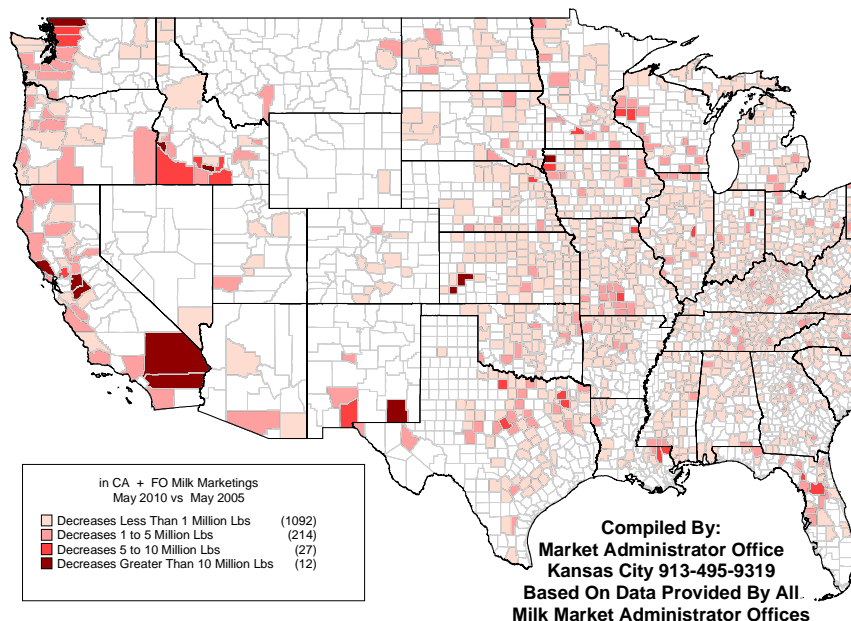
This compares to 4.732 billion pounds (32.11% of the total) from 1,345 counties that decreased marketings, comparing May 2010 with five years earlier. There were 1,306 counties with no CA+FO marketings in May 2010; 212 of these counties had marketings during May 2005.

Milk from twelve counties accounted for 25% of all CA+FO marketings during May 2010, which is unchanged from the number of

counties marketing 25% during May 2005. Eight of the top twelve counties are located in California, with Tulare (CA) county's 971.1 million pounds leading the way. Marketings from this county represent 6.59% of the CA+FO May 2010 total. To put this in perspective, it requires the combined marketings of 1,230 counties with the lowest marketings to surpass the Tulare county total. The twelve counties that represent 25% of the CA+FO total for May 2010 are depicted in the top left map on page two.

As indicated by the top right map on page two, 61 counties marketed 50% of the May 2010 CA+FO total, down from 67 counties in May 2005. In May 2010 a total of 199 counties marketed 75% of the CA+FO total, while 1,804 counties had milk marketings under either the Federal order or California state order programs. The comparable number of counties for May 2005 were 230 and 1,966, respectively.

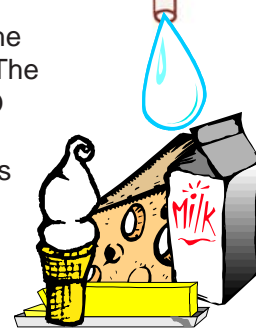
1,345 Counties Decreased Marketings



The counties representing 75% and 100% of CA+FO milk marketings are depicted in the lower two maps on page two. The map on page three details CA+FO milk marketings by selected size ranges for May 2010, while counties with no CA+FO milk marketings are depicted in the map on the last page of this bulletin.

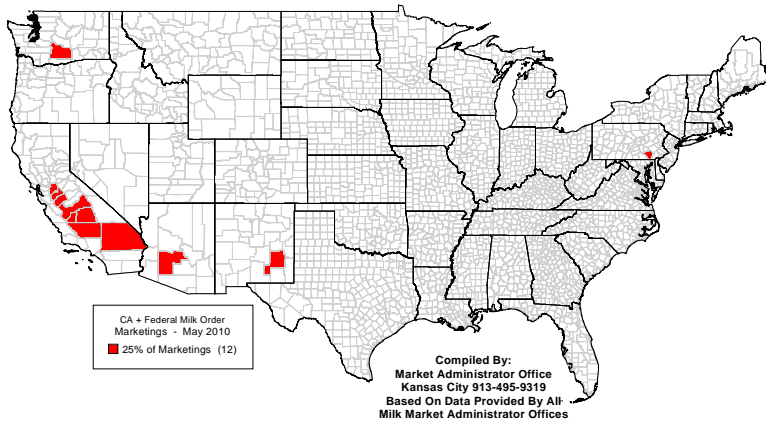
OCTOBER

2010

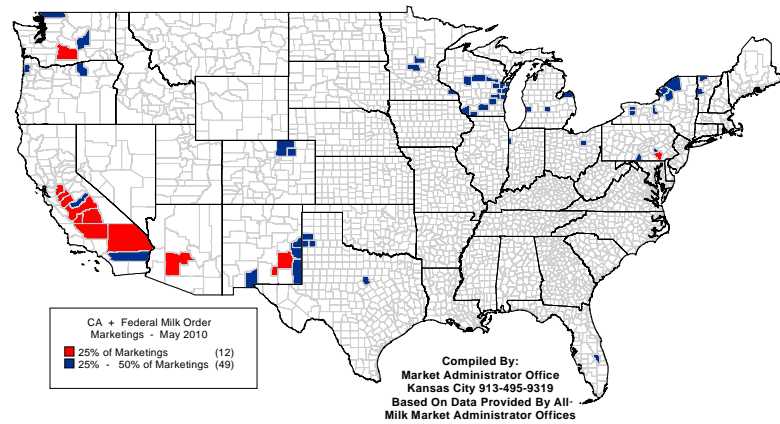


* A significant volume of milk from certain areas is not included in this data due to the termination of the Western Order No. 135.

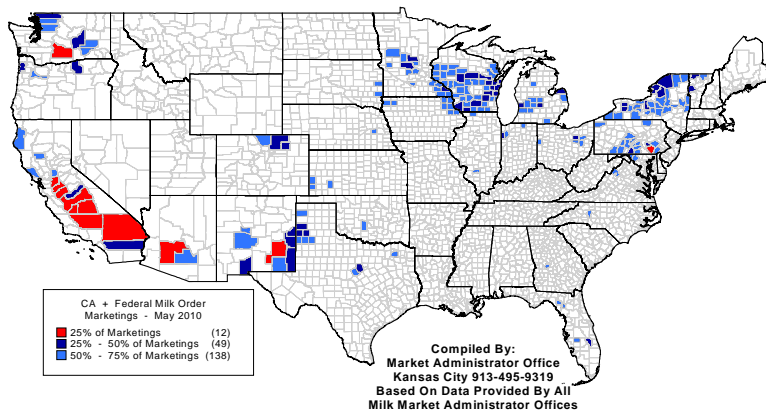
**12 Counties Marketed 25% of All
CA + Federal Order Milk During May 2010**



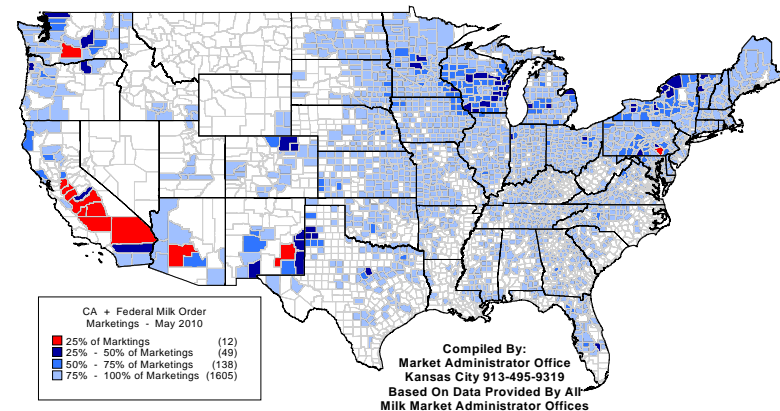
**61 Counties Marketed 50% Of All
CA + Federal Order Milk During May 2010**



**199 Counties Marketed 75% Of All
CA + Federal Order Milk During May 2010**



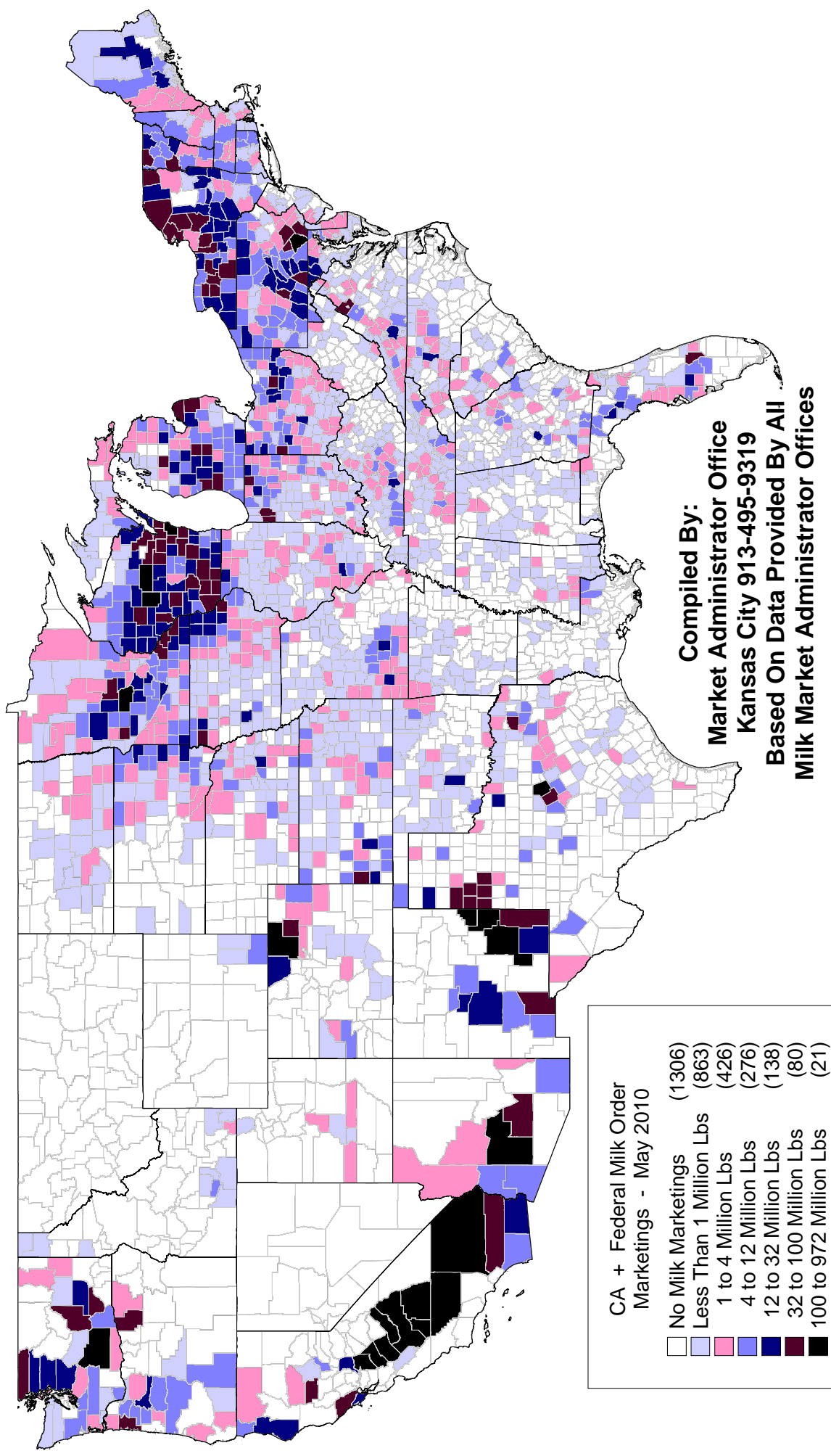
**1,804 Counties Marketed 100% Of All
CA + Federal Order Milk During May 2010**



Twelve Counties Marketed 25% Of The CA + Federal Order Milk During May 2010

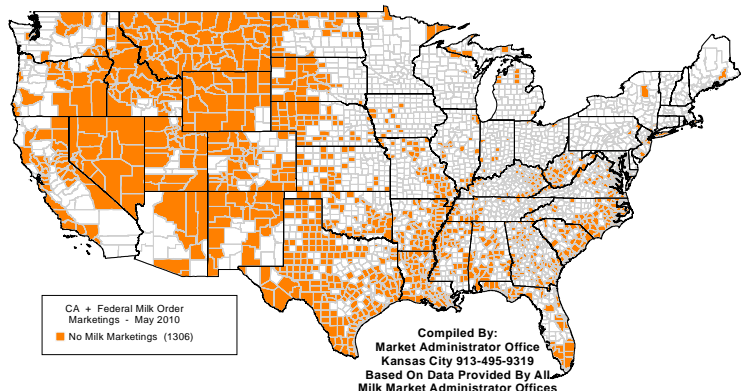
	<u>May 2010 Mktgs</u>	<u>May 2005 Mktgs</u>	<u>Percent Change</u>	<u>Percentage of May 2010 Total</u>
1. Tulare, CA	971,134,974	836,075,303	+16.15	6.59
2. Merced, CA	431,164,551	431,395,132	-0.05	2.93
3. Kings, CA	363,898,000	279,501,314	+30.20	2.47
4. Kern, CA	327,626,131	261,094,727	+25.48	2.22
5. Maricopa, AZ	301,117,681	226,199,194	+33.12	2.04
6. Stanislaus, CA	293,712,004	334,060,054	-12.08	1.99
7. Fresno, CA	230,911,091	206,133,581	+12.02	1.57
8. Yakima, WA	207,171,464	175,250,311	+18.21	1.41
9. Lancaster, PA	206,932,276	204,159,424	+1.36	1.40
10. San Joaquin, CA	182,221,721	193,590,885	-5.87	1.24
11. Chaves, NM	168,104,726	153,968,266	+9.18	1.14
12. San Bernardino, CA	137,447,867	222,567,126	-38.24	0.93
12 - County Total	3,821,442,486	3,523,995,317	+8.44	25.93
CA + FO Total	14,736,869,547	14,083,587,081	+4.64	

CA + Federal Order Milk Marketings By County - May 2010



	Statistical Uniform Price		Producer Price Differential		Class I Utilization	
	Sep '10	Aug '10	Sep '10	Aug '10	Sep '10	Aug '10
Northeast	18.33	17.74	2.07	2.56	45.31	40.74
Appalachian	19.16	18.67	-----	-----	72.77	70.72
Florida	21.04	20.74	-----	-----	87.86	86.56
Southeast	19.38	19.02	-----	-----	74.01	73.49
Upper Midwest	16.60	15.65	0.34	0.47	13.95	12.68
Central	17.01	16.40	0.75	1.22	33.61	32.66
Mideast	17.26	16.76	1.00	1.58	43.50	41.65
Pacific Northwest	16.94	16.16	0.68	0.98	28.91	26.13
Southwest	17.95	17.37	1.69	2.19	43.38	42.17
Arizona	17.33	16.60	-----	-----	37.01	36.35

Counties With "NO" CA + Federal Order Milk Marketings
May 2010



The U.S. Department of Agriculture (USDA) prohibits discrimination in all its programs and activities on the basis of race, color, national origin, age, disability, and where applicable, sex, marital status, familial status, parental status, religion, sexual orientation, genetic information, political beliefs, reprisal, or because all or a part of an individual's income is derived from any public assistance program. (Not all prohibited bases apply to all programs.) Persons with disabilities who require alternative means for communication of program information (Braille, large print, audiotape, etc.) should contact USDA's TARGET Center at (202) 720-2600 (voice and TDD).

To file a complaint of discrimination write to USDA, Director, Office of Civil Rights, 1400 Independence Avenue, S.W., Washington, D.C. 20250-9410 or call (800) 795-3272 (voice) or (202) 720-6382 (TDD). USDA is an equal opportunity provider and employer.



FEDERAL MILK MARKET ADMINISTRATOR
P.O. BOX 14650
SHAWNEE MISSION, KANSAS 66285-4650

Website: www.fmmacentral.com
E-mail: market.administrator@fmmacentral.com
Phone: 913-495-9300

FIRST CLASS
U.S. POSTAGE
PAID
SHAWNEE MISSION, KS
PERMIT NO. 377

FIRST CLASS