

MARKETING SERVICE

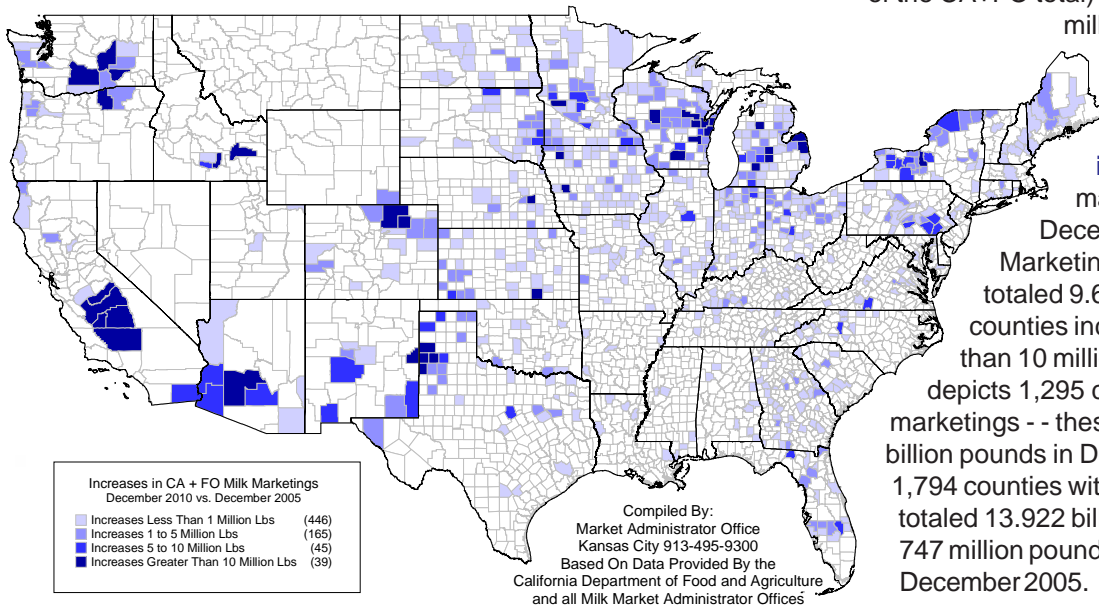
BULLETIN

California & Federal Order Marketings by County

The origin of milk marketings remains highly concentrated, with 59 counties accounting for 50% of the December 2010 California & Federal order (CA+FO) total.* These 59 counties represent only 3.3% of the 1,794 counties with CA+FO milk marketings, and this number is down from 64 counties that comprised 50% of the total in December 2005. While each of

695 Counties Increased Marketings

the 59 largest counties marketed more than 41 million pounds, there were 899 counties (50.1% of the CA+FO total) that marketed less than one million pounds each in December 2010.



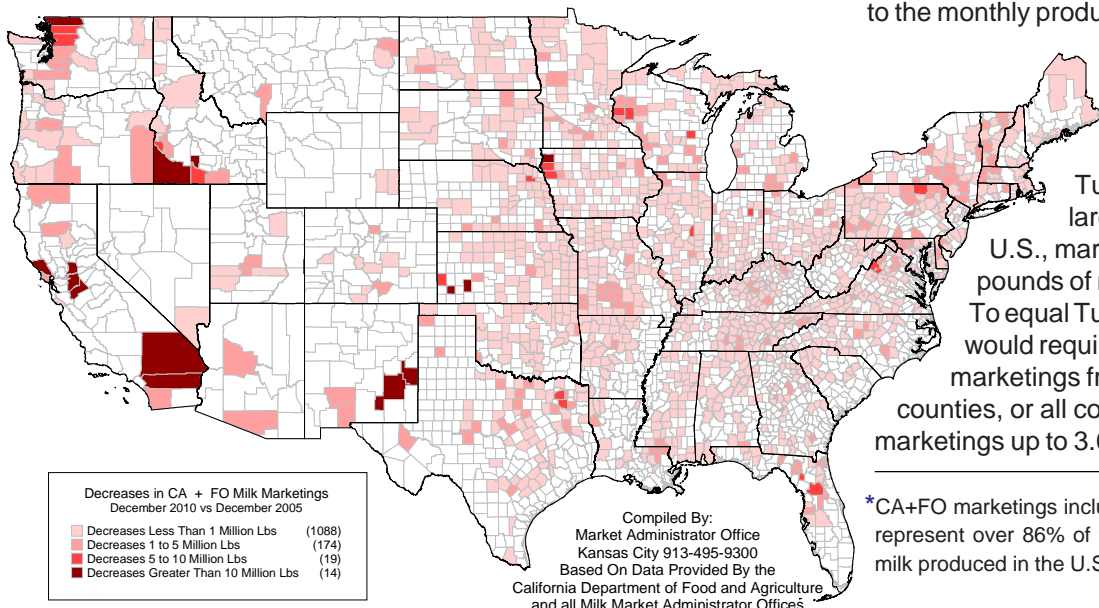
The top map on this page depicts 695 counties with **increased** CA+FO milk marketings, comparing December 2010 with 2005.

Marketings from these counties totaled 9.612 billion pounds, with 39 counties increasing marketings by more than 10 million pounds. The map below depicts 1,295 counties with **decreased** marketings -- these counties marketed 4.310 billion pounds in December 2010. Milk from all 1,794 counties with CA+FO order marketings totaled 13.922 billion pounds, an **increase** of 747 million pounds (+5.67%) compared with December 2005.

California milk marketings included in this analysis totaled 3.142 billion pounds, or 22.6% of the CA+FO December 2010 total. The magnitude of milk from 10 California counties with the most marketings dwarfs a majority of all other counties combined. Ranking all the counties with CA+FO milk marketings in ascending order would require marketings from 1,564 counties (87.2% of the 1,794 total) to equal the amount from these 10 California counties (3.011 billion pounds). Not all of these 1,564 counties would be considered small

1295 Counties Decreased Marketings

in terms of milk marketings, since counties with up to 12 million pounds would be included in this grouping. Twelve million pounds of milk is equal to the monthly production from more than 6,800 cows, assuming the U.S. 2010 annual production average of 21,149 pounds of milk per cow.

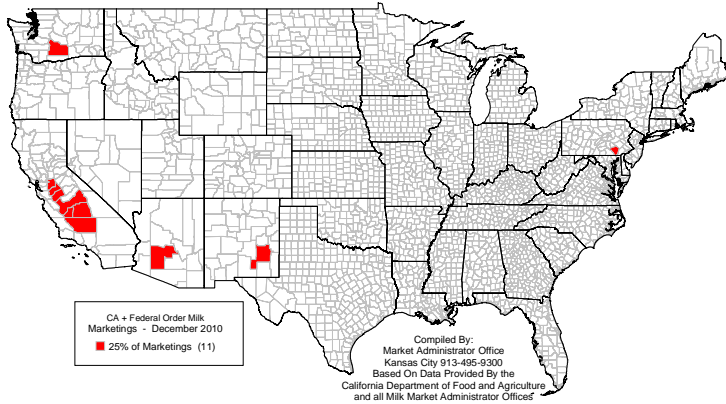


Tulare County (CA), the largest dairy county in the U.S., marketed 898.2 million pounds of milk in December 2010. To equal Tulare County's total would require the combined milk marketings from the smallest 1,230 counties, or all counties with marketings up to 3.035 million pounds.

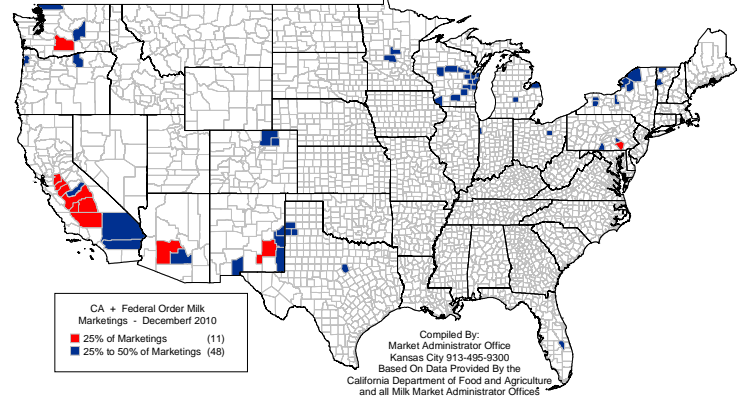
*CA+FO marketings included in this analysis represent over 86% of the total pounds of milk produced in the U.S. in December 2010.



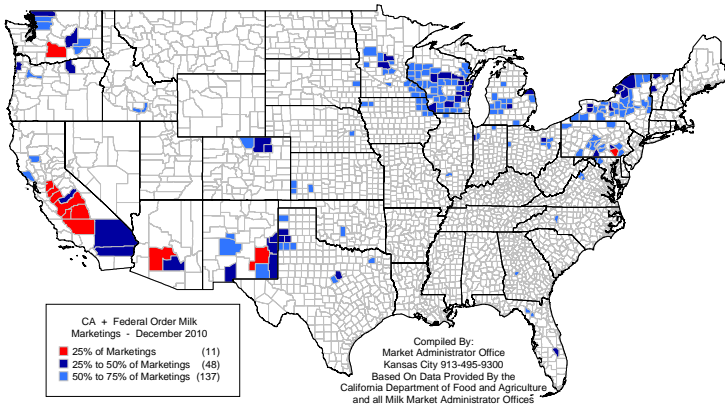
**11 Counties Marketed 25% of All
CA + Federal Order Milk During December 2010**



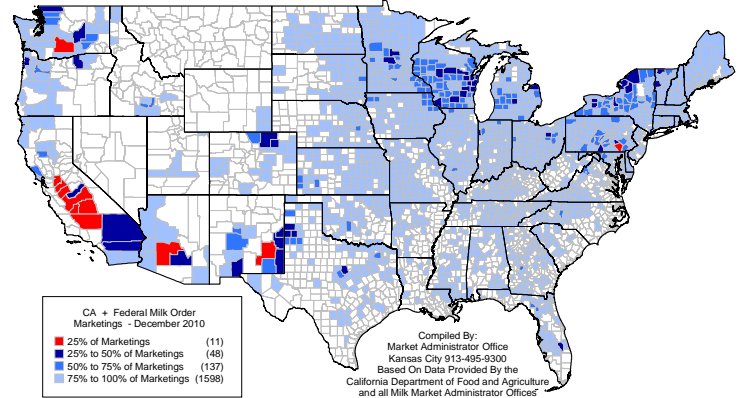
**59 Counties Marketed 50% Of All
CA + Federal Order Milk During December 2010**



**196 Counties Marketed 75% Of All
CA + Federal Order Milk During December 2010**



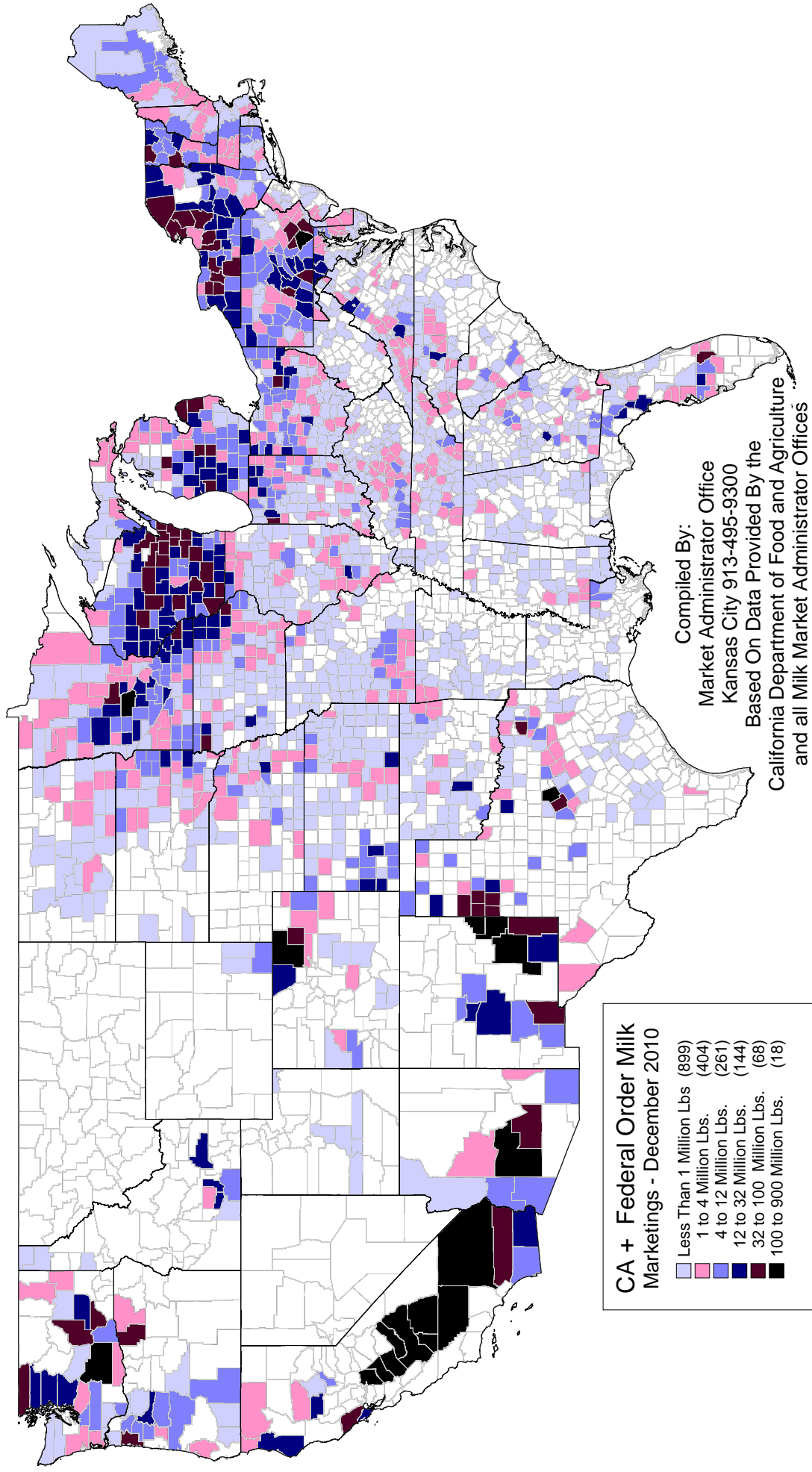
**1794 Counties Marketed 100% Of All
CA + Federal Order Milk During December 2010**



**Eleven Counties Marketed 25% Of The CA + Federal Order Milk
During December 2010**

	<u>Dec '10 Mktgs</u>	<u>Dec '05 Mktgs</u>	<u>Percent Change</u>	<u>Dec 2010 As % Of 12/10 Total</u>
Tulare, CA	898,203,787	836,130,674	+7.42	6.45
Merced, CA	420,610,349	420,090,635	+0.12	3.02
Kings, CA	352,271,592	281,777,659	+25.02	2.53
Kern, CA	314,400,611	259,357,306	+21.22	2.26
Maricopa, AZ	291,152,751	218,088,246	+33.50	2.09
Stanislaus, CA	287,113,279	320,713,969	-10.48	2.06
Fresno, CA	220,144,205	204,754,884	+7.52	1.58
Yakima, WA	198,581,542	169,167,416	+17.39	1.43
Lancaster, PA	192,636,493	185,694,448	+3.74	1.38
San Joaquin, CA	176,462,922	187,133,485	-5.70	1.27
Chaves, NM	158,449,872	171,869,775	-7.81	1.14
11-County Total	3,510,027,403	3,254,778,497	+7.84	25.21
CA + FO Total	13,921,772,413	13,174,902,010	+5.67	

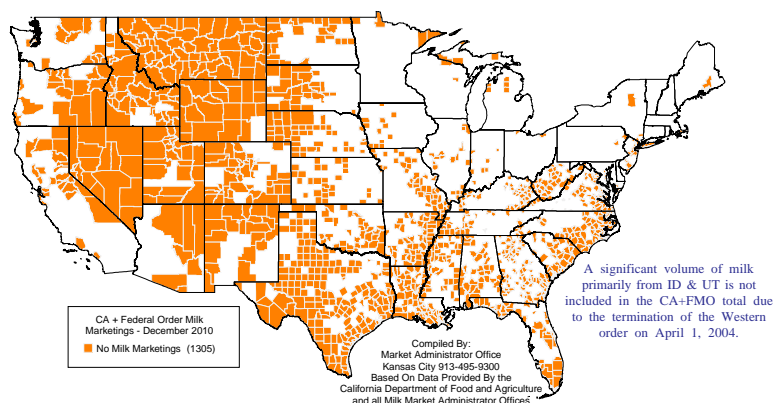
CA + Federal Order Milk Marketings By County - December 2010



Color copies of these maps are available from the Central federal order website at www.fmmcentral.com under "news & publications - marketing service bulletin."

	Statistical Uniform Price		Producer Price Differential		Class I Utilization	
	May '11	Apr '11	May '11	Apr '11	May '11	Apr '11
Northeast	20.79	20.38	4.27	3.51	37.80	38.34
Appalachian	22.10	21.74	-----	-----	65.54	67.80
Florida	24.18	23.88	-----	-----	79.95	83.21
Southeast	21.65	21.35	-----	-----	59.91	57.23
Upper Midwest	17.26	17.51	0.74	0.64	11.86	12.97
Central	18.66	18.71	2.14	1.84	29.31	32.38
Mideast	19.34	19.19	2.82	2.32	42.07	40.49
Pacific Northwest	19.02	18.95	2.50	2.08	29.82	26.86
Southwest	19.94	19.89	3.42	3.02	34.41	34.66
Arizona	19.88	19.56	-----	-----	28.05	28.49

**Counties With No CA + Federal Order Milk Marketings
December 2010**



The U.S. Department of Agriculture (USDA) prohibits discrimination in all its programs and activities on the basis of race, color, national origin, age, disability, and where applicable, sex, marital status, familial status, parental status, religion, sexual orientation, political beliefs, genetic information, reprisal, or because all or part of an individual's income is derived from any public assistance program. (Not all prohibited bases apply to all programs.) Persons with disabilities who require alternative means for communication of program information (Braille, large print, audiotape, etc.) should contact USDA's TARGET Center at (202) 720-2600 (voice and TDD).

To file a complaint of discrimination write to USDA, Assistant Secretary for Civil Rights, Office of the Assistant Secretary for Civil Rights, 1400 Independence Avenue, S.W., Stop 9410, Washington, D.C. 20250-9410, or call (866) 632-9992 (English) or (800) 877-8339 (TDD) or (866) 377-8642 (English Federal-relay) or (800) 845-6136 (Spanish Federal-relay). USDA is an equal opportunity provider and employer.



**United States
Department of
Agriculture**

FEDERAL MILK MARKET ADMINISTRATOR
P.O. BOX 14650
SHAWNEE MISSION, KANSAS 66285-4650

Website: www.fmmacentral.com
E-mail: market.administrator@fmmacentral.com
Phone: 913-495-9300

FIRST CLASS
U.S. POSTAGE
PAID
SHAWNEE MISSION, KS
PERMIT NO. 377

FIRST CLASS