

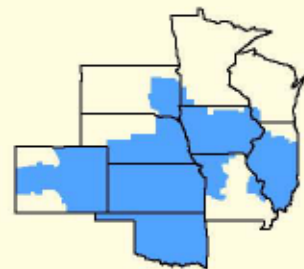
**NOVEMBER 2013**

Marketing Service



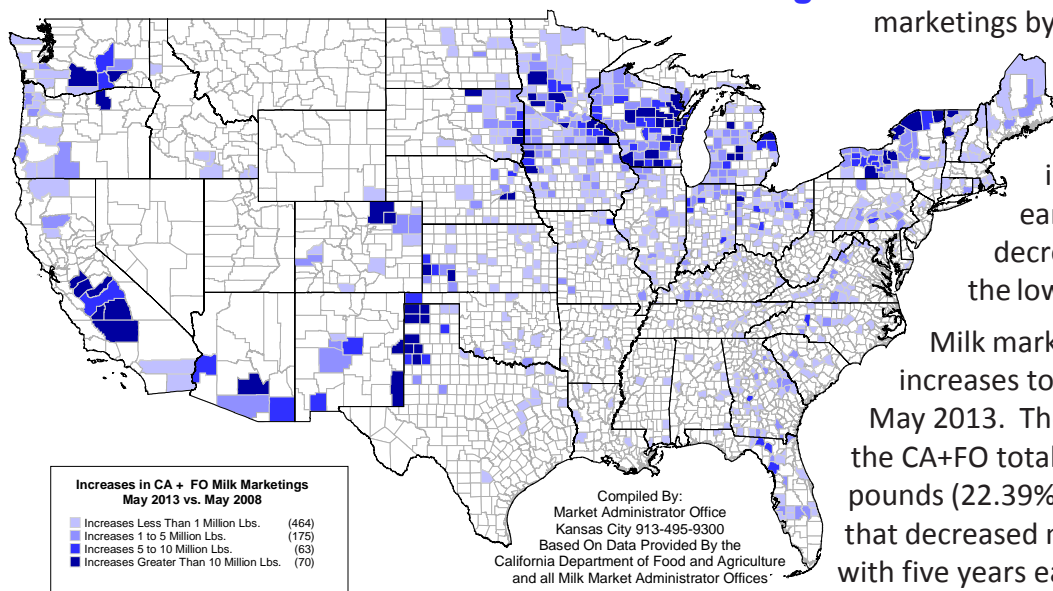
# Bulletin

Facilitating the efficient  
marketing of milk and  
dairy products.



**CENTRAL MARKETING AREA**

## 772 Counties Increased Marketings

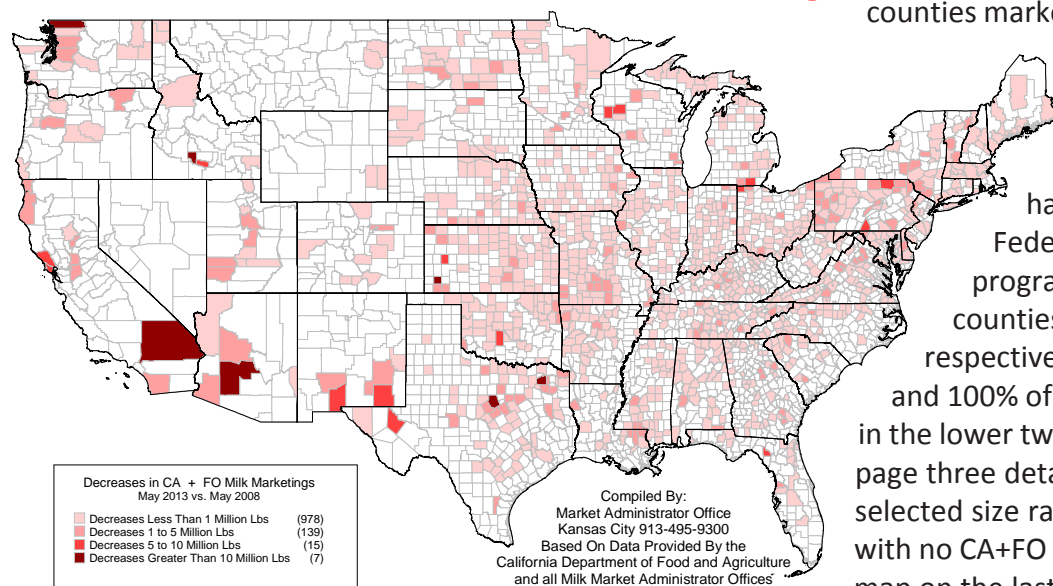


This Bulletin details California & Federal order milk marketings by county for May 2013 and includes comparisons with May 2008. The top map on this page depicts counties with CA+FO marketing increases compared with five years earlier, while counties that reported decreased marketings are portrayed in the lower map.

Milk marketings from 772 counties with increases totaled 11.988 billion pounds during May 2013. These marketings represent 77.61% of the CA+FO total. This compares to 3.458 billion pounds (22.39% of the total) from 1,139 counties that decreased marketings, comparing May 2013 with five years earlier. There were 1,388 counties with no CA+FO marketings in May 2013; 199 of these counties had marketings during May 2008.

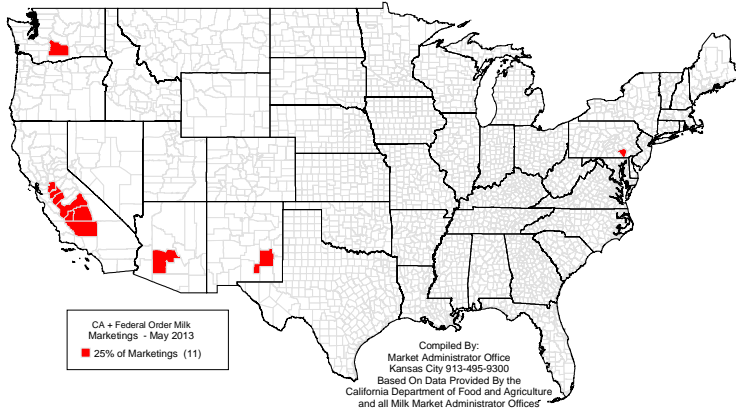
Milk from eleven counties accounted for 25% of all CA+FO marketings during May 2013, which is an increase from the nine counties marketing 25% during May 2008. Seven of the top eleven counties are located in California, with Tulare (CA) county's 1.024 billion pounds leading the way. Marketings from this county represent 6.63% of the CA+FO May 2013 total. To put this in perspective, it requires the combined marketings of 1,191 counties with the lowest marketings to surpass the Tulare county total. The eleven counties that represent 25% of the CA+FO total for May 2013 are depicted in the top left map on page two.

## 1,139 Counties Decreased Marketings

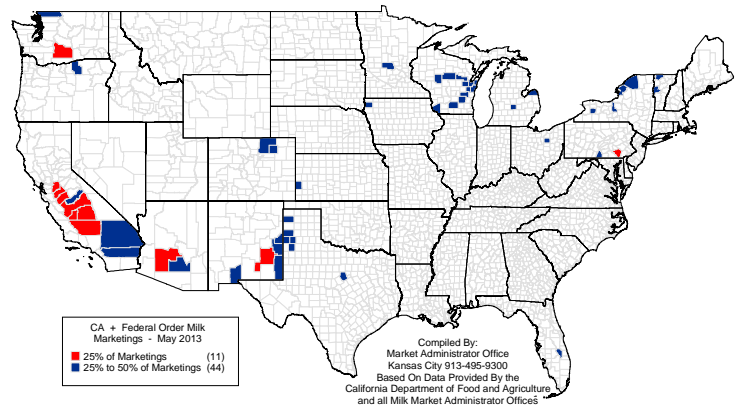


As indicated by the top right map on page two, 55 counties marketed 50% of the May 2013 CA+FO total, up from 54 counties in May 2008. In May 2013 a total of 185 counties marketed 75% of the CA+FO total, while 1,712 counties had milk marketings under either the Federal order or California state order programs. The comparable number of counties for May 2008 were 196 and 1,853, respectively. The counties representing 75% and 100% of CA+FO milk marketings are depicted in the lower two maps on page two. The map on page three details CA+FO milk marketings by selected size ranges for May 2013, while counties with no CA+FO milk marketings are depicted in the map on the last page of this bulletin.

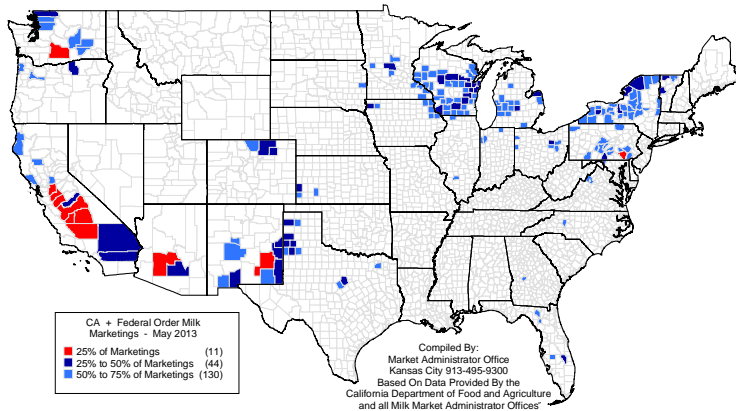
**11 Counties Marketed 25% of All  
CA + Federal Order Milk During May 2013**



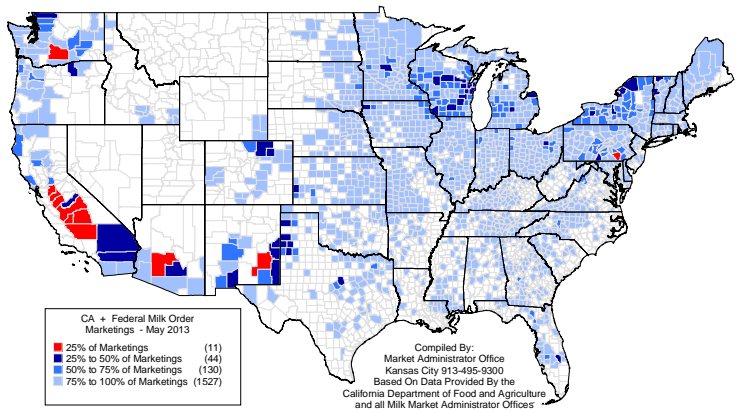
**55 Counties Marketed 50% Of All  
CA + Federal Order Milk During May 2013**



**185 Counties Marketed 75% Of All  
CA + Federal Order Milk During May 2013**



**1,712 Counties Marketed 100% Of All  
CA + Federal Order Milk During May 2013**

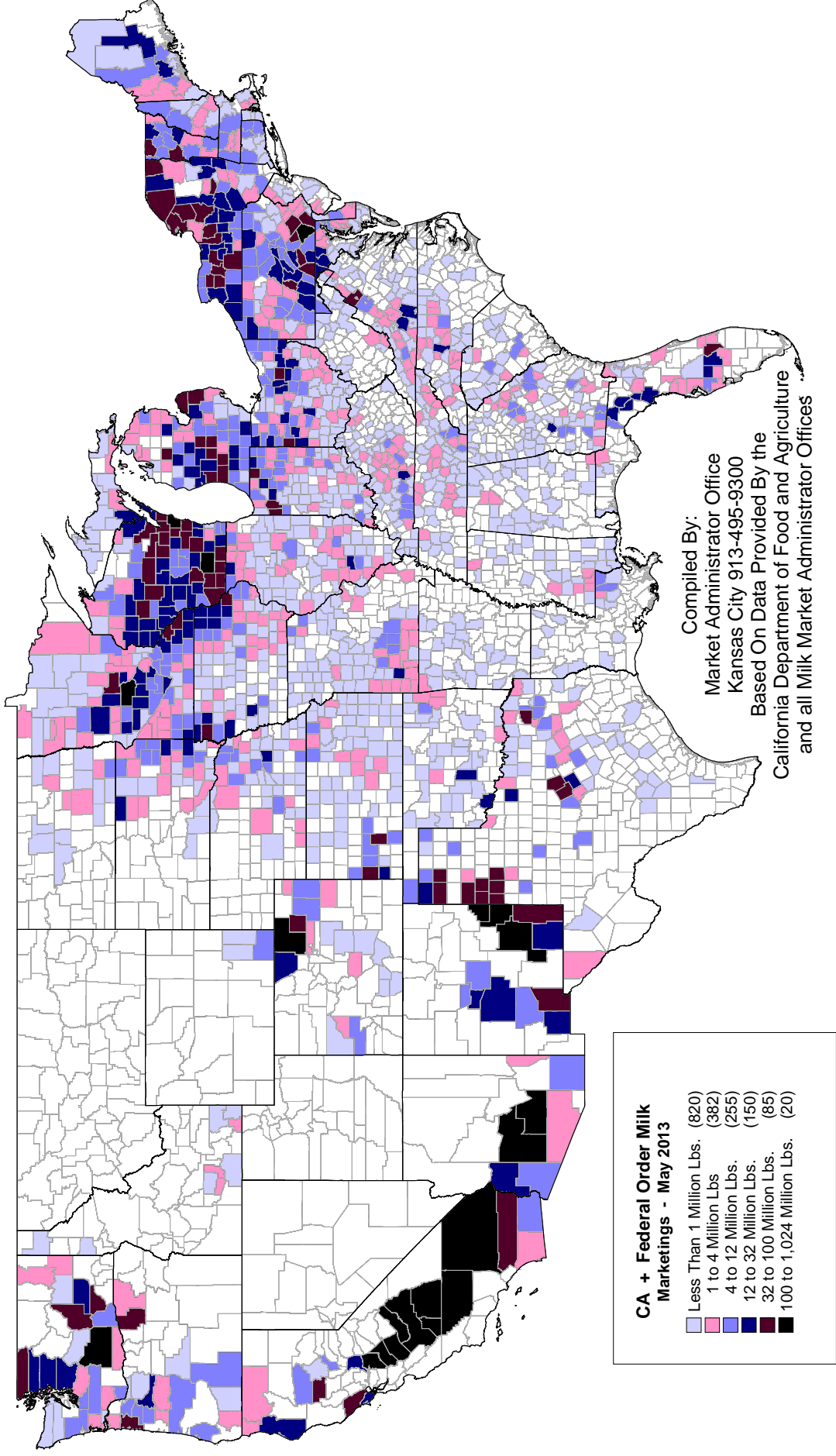


## **Eleven Counties Marketed 25% Of The CA + Federal Order Milk During May 2013**

	<b><u>May'13 Mktgs</u></b>	<b><u>May'08 Mktgs</u></b>	<b><u>Percent Change</u></b>	<b><u>May 2013 As % Of 05/13 Total</u></b>
Tulare, CA	1,023,929,156	919,528,636	+11.35	6.63
Merced, CA	511,504,980	486,019,478	+5.24	3.31
Kings, CA	379,332,018	350,031,935	+8.37	2.46
Stanislaus, CA	370,245,836	352,857,317	+4.93	2.40
Kern, CA	368,723,568	327,464,286	+12.60	2.39
Fresno, CA	244,040,687	236,334,295	+3.26	1.58
Yakima, WA	234,145,836	191,738,394	+22.12	1.52
Maricopa, AZ	214,729,660	303,812,198	-29.32	1.39
San Joaquin, CA	209,411,068	211,940,691	-1.19	1.36
Lancaster, PA	204,417,437	208,023,001	-1.73	1.32
Chaves, NM	173,387,485	176,615,926	-1.83	1.12
<b>11-County Total</b>	<b>3,933,867,731</b>	<b>3,764,336,157</b>	<b>+4.50</b>	<b>25.47</b>
<b>CA + FO Total</b>	<b>15,446,232,487</b>	<b>13,626,140,065</b>	<b>+13.36</b>	

# CA + Federal Order Milk Marketings By County

## May 2013





**United States  
Department of  
Agriculture**

FIRST CLASS  
U.S. POSTAGE  
PAID  
SHAWNEE MISSION, KS  
PERMIT NO. 377

**FEDERAL MILK MARKET ADMINISTRATOR**

P.O. BOX 14650

SHAWNEE MISSION, KANSAS 66285-4650

Website: [www.fmmacentral.com](http://www.fmmacentral.com)

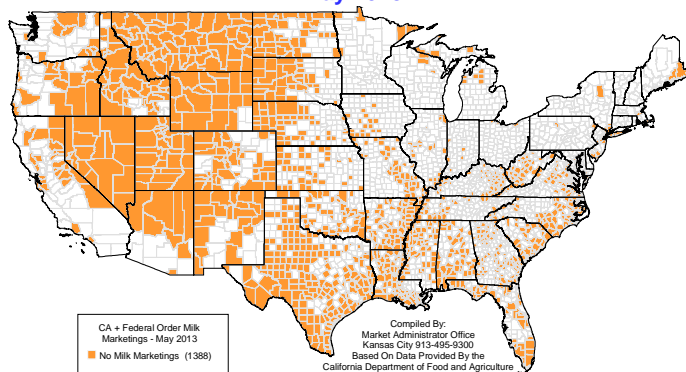
E-mail: [market.administrator@fmmacentral.com](mailto:market.administrator@fmmacentral.com)

Phone: 913-495-9300

**FIRST CLASS**

	Statistical Uniform Price		Producer Price Differential		Class I Utilization	
	<u>Oct '13</u>	<u>Sep '13</u>	<u>Oct '13</u>	<u>Sep '13</u>	<u>Oct '13</u>	<u>Sep '13</u>
Northeast	20.88	20.58	2.66	2.44	40.23	38.86
Appalachian	22.25	21.72	---	---	73.12	70.81
Florida	24.28	23.86	---	---	87.14	86.51
Southeast	22.58	22.10	---	---	72.41	69.71
Upper Midwest	18.60	18.50	0.38	0.36	11.33	10.84
<b>Central</b>	<b>19.25</b>	<b>19.17</b>	<b>1.03</b>	<b>1.03</b>	<b>34.44</b>	<b>32.57</b>
Mideast	19.77	19.56	1.55	1.42	43.40	40.81
Pacific Northwest	19.28	19.13	1.06	0.99	29.89	28.92
Southwest	20.00	19.97	1.78	1.83	37.04	36.02
Arizona	20.24	19.79	---	---	31.91	33.44

**Counties With No CA + Federal Order Milk Marketings  
May 2013**



The U.S. Department of Agriculture (USDA) prohibits discrimination in all its programs and activities on the basis of race, color, national origin, age, disability, and where applicable, sex (including gender identity and expression), marital status, familial status, parental status, religion, sexual orientation, political beliefs, genetic information, reprisal, or because all or part of an individual's income is derived from any public assistance program. (Not all prohibited bases apply to all programs.) Persons with disabilities who require alternative means for communication of program information (Braille, large print, audiotape, etc.) should contact USDA's TARGET Center at (202) 720-2600 (voice and TDD).

To file a complaint of discrimination, write to USDA, Assistant Secretary for Civil Rights, Office of the Assistant Secretary for Civil Rights, 1400 Independence Avenue, S.W., Stop 9410, Washington, D.C. 20250-9410. Or call toll-free at (866) 632-9992 (English) or (800) 877-8339 (TDD) or (866) 377-8642 (English Federal-relay) or (800) 845-6136 (Spanish Federal-relay). USDA is an equal opportunity provider and employer.