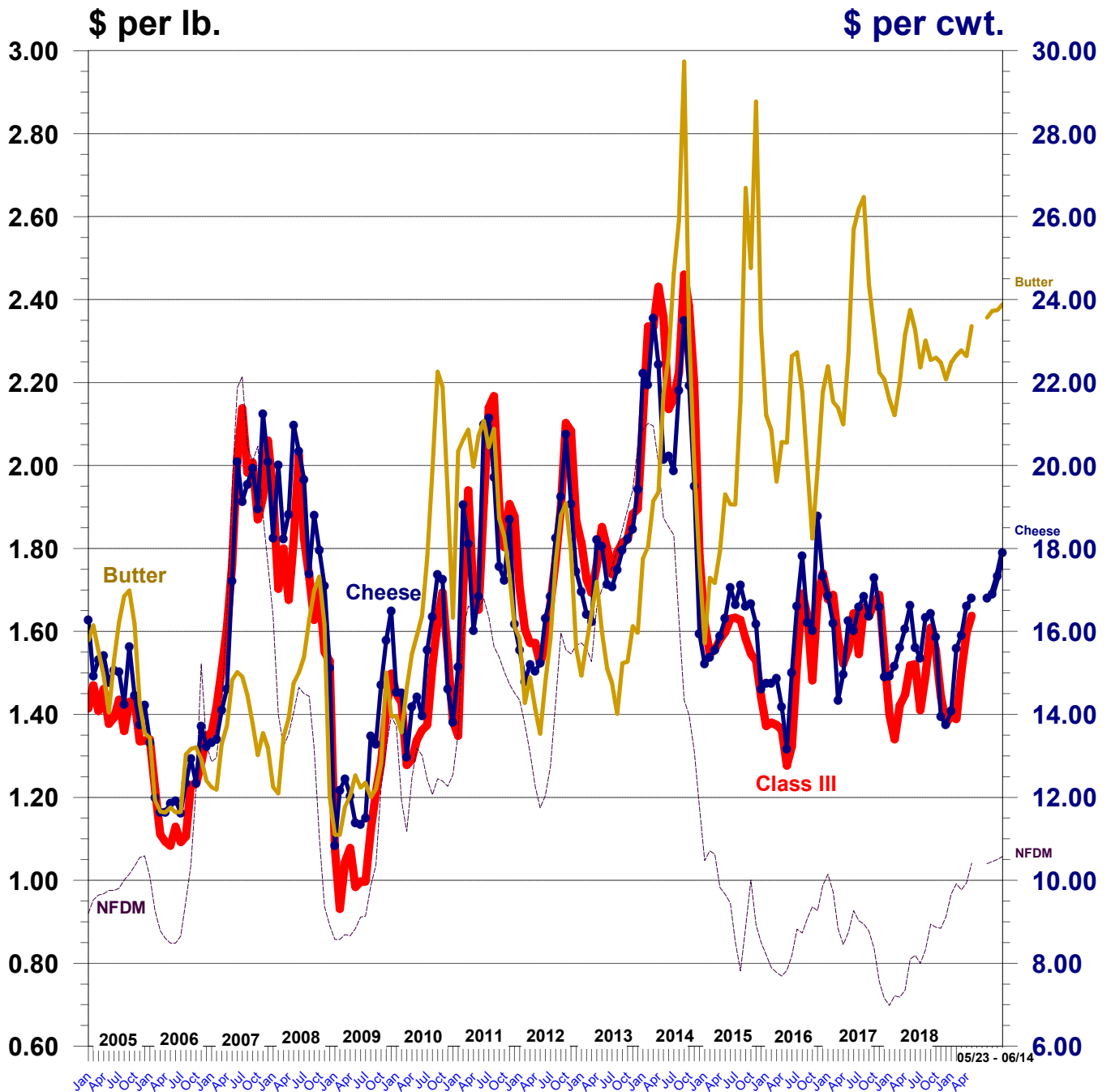


# Dairy Product Prices\*

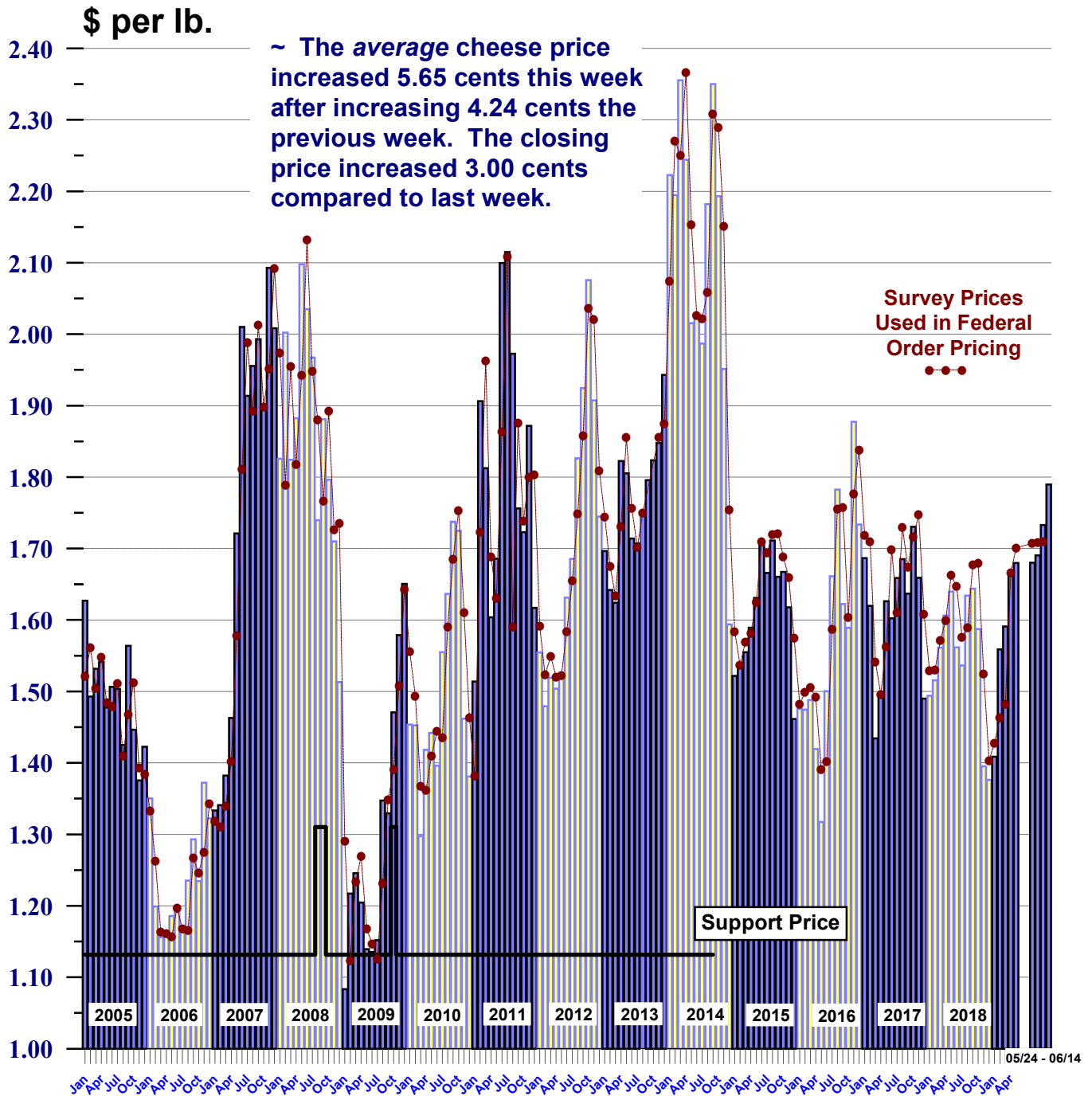
## Grade AA Butter, Block Cheese, NFDM, & the Class III Price



**January 2005 through June 14, 2019**

\* Chicago Mercantile Grade AA Butter Price; Chicago Mercantile Exchange 40-pound Block Cheese Price; Central & East Low/Medium Heat Nonfat Dry Milk Price; and the 3.5% butterfat Class III Price.

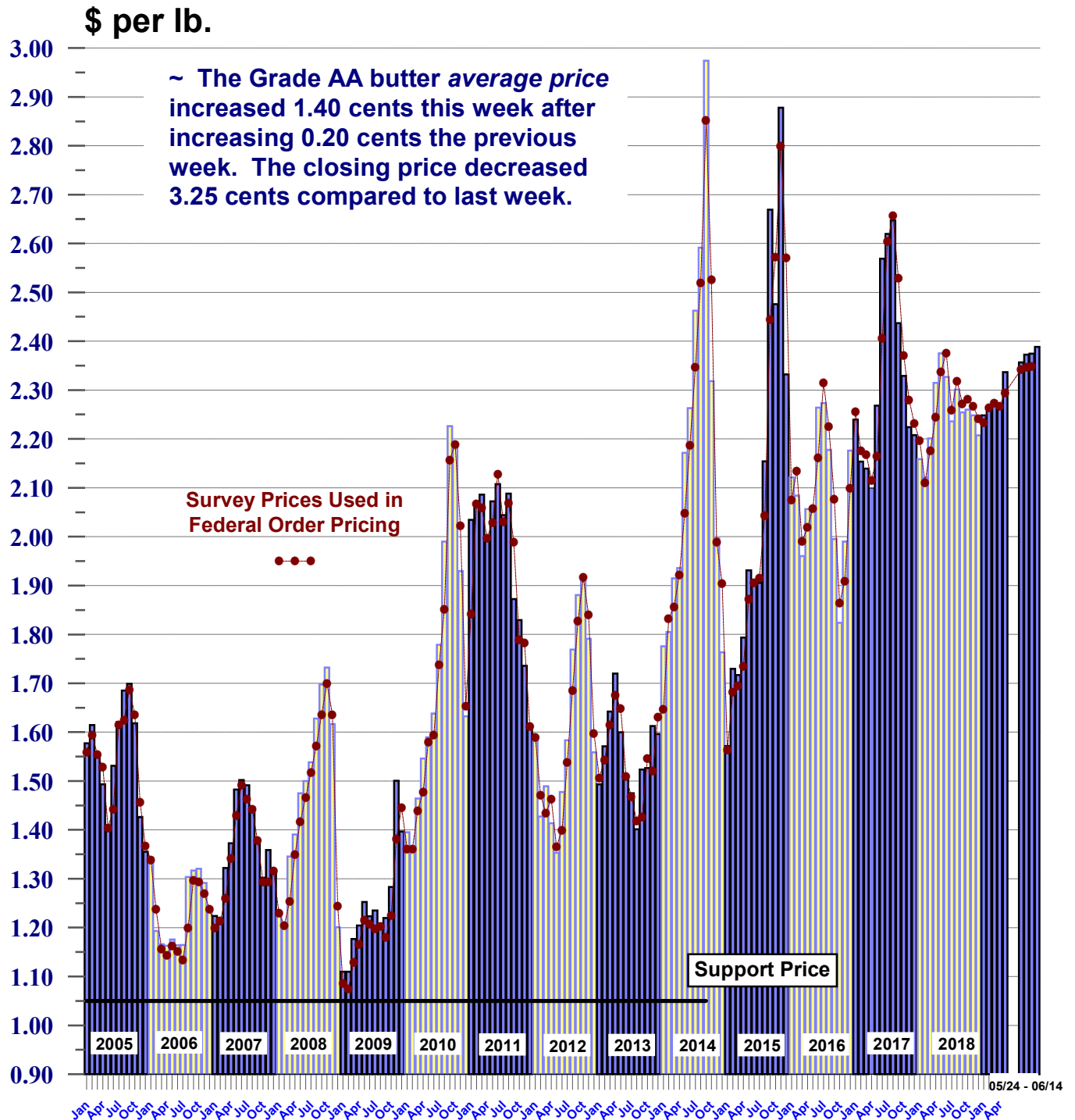
# Chicago Mercantile Exchange 40-Pound Block Cheese Prices



**January 2005 through June 14, 2019**

**June 10th - June 14th Average - \$1.7895**  
**June 14st Price - \$1.7825**

# Chicago Mercantile Grade AA Butter Prices



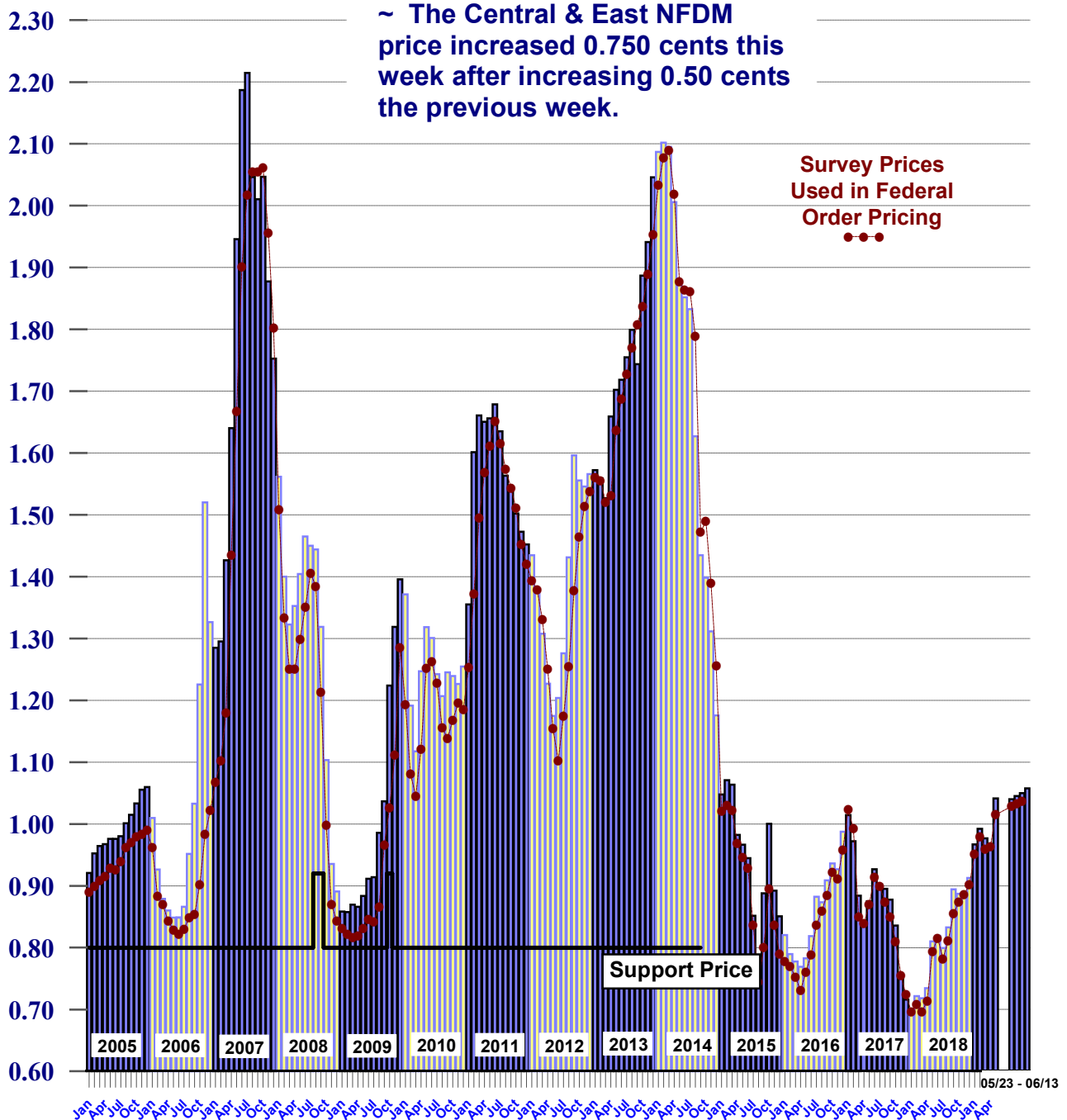
**January 2005 through June 14, 2019**

**June 10th - June 14th Average - \$2.3885**

**June 14th Price - \$2.3650**

# Nonfat Dry Milk Prices\*

\$ per lb.

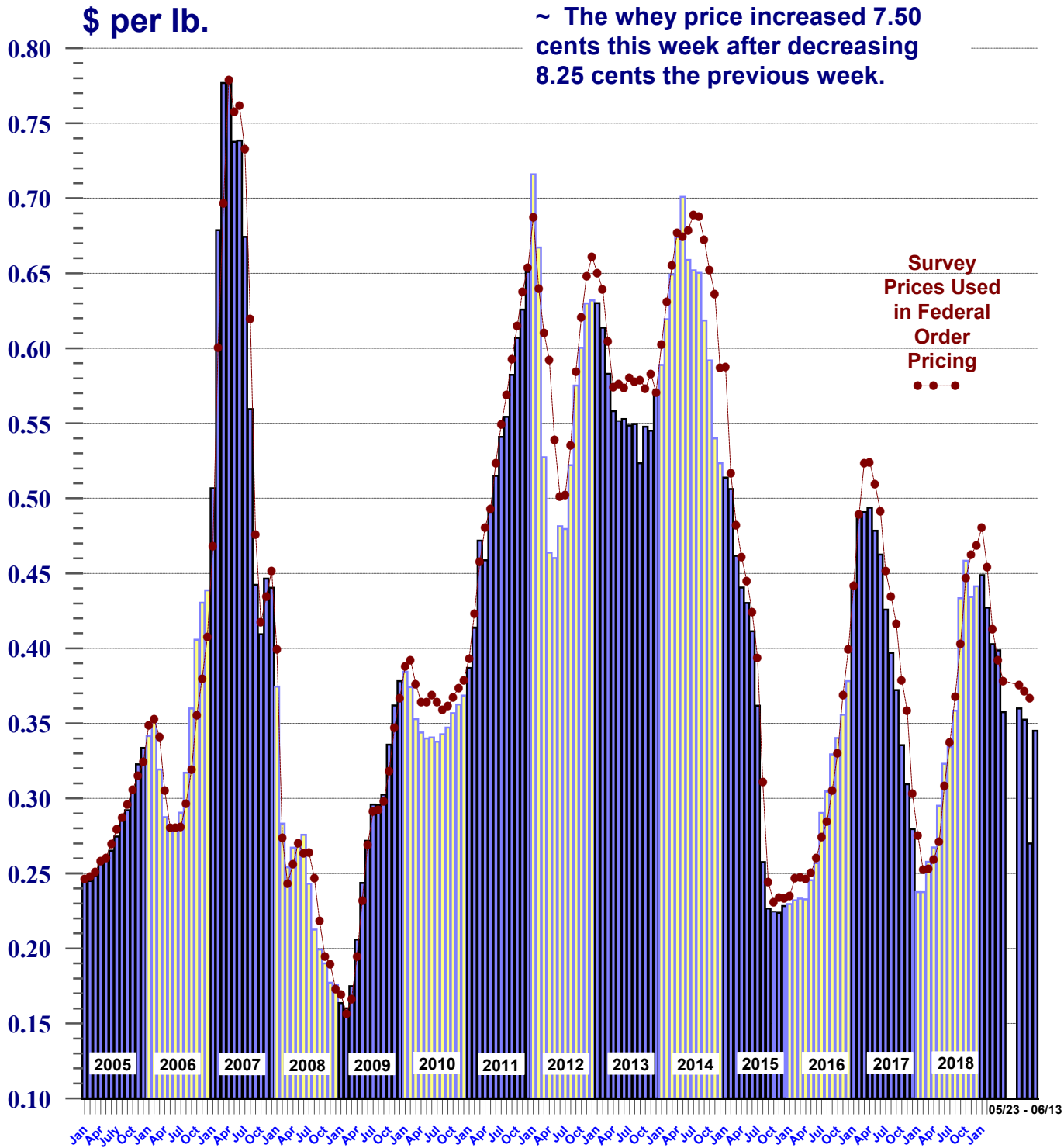


**January 2005 through June 13, 2019**

**June 13th Price - \$1.0575**

\* Central prices for low/medium heat prior to December 31, 2001;  
Central & East prices for low/medium heat thereafter.

# Central States Nonhydroscopic Whey Prices



**January 2005 through June 13, 2019**

**June 13th Price - \$0.3450**