



United States
Department of
Agriculture

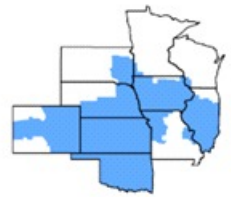
Agricultural Marketing Service
Dairy Program

MARKET ADMINISTRATOR

Central Federal Order No. 32

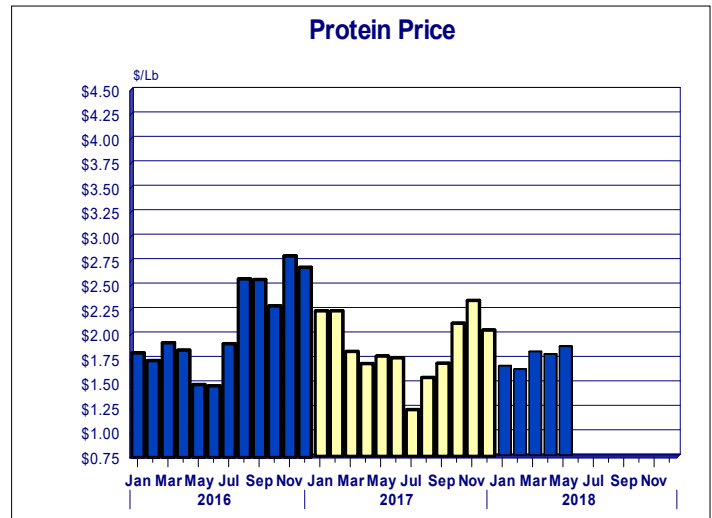
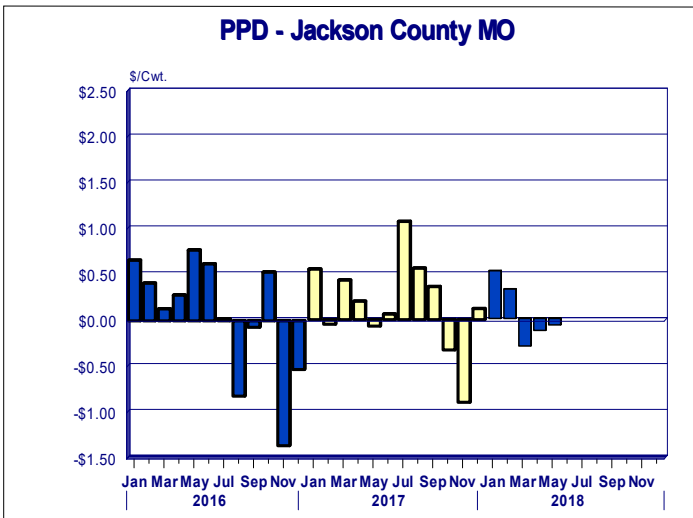
10801 Renner Boulevard
Lenexa, Kansas 66219

phone (913) 495-9300 fax (913) 888-9207
e-mail market.administrator@fmmacentral.com
home page www.fmmacentral.com



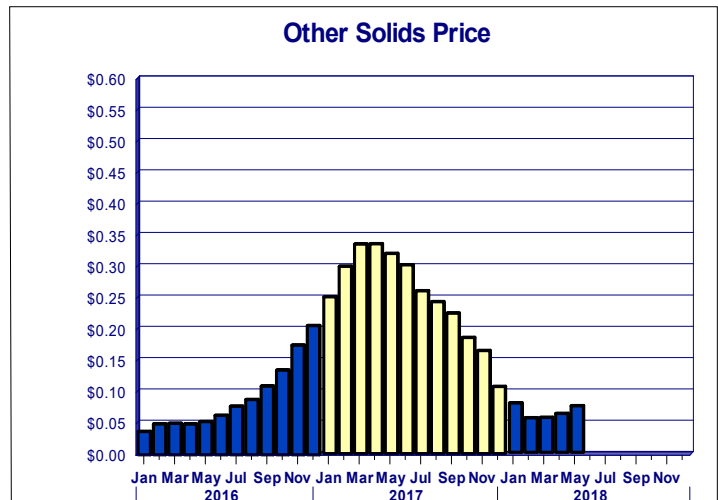
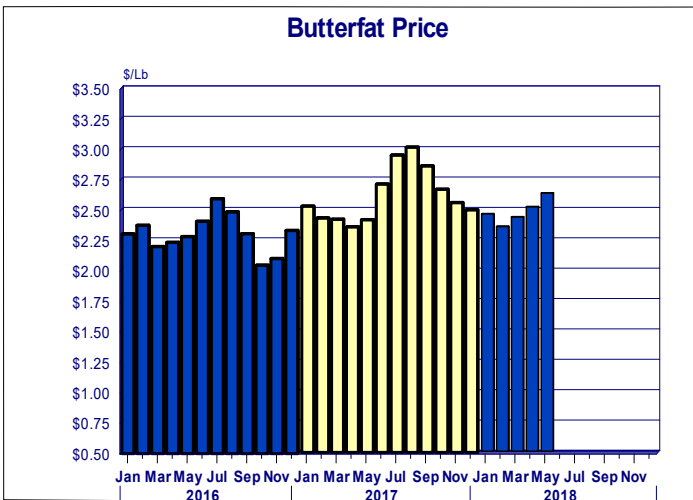
MAILING ADDRESS:
P.O. Box 14650
Shawnee Mission, KS 66285-4650

CENTRAL FEDERAL ORDER NO. 32 SELECTED MARKETING DATA FOR May 2018



Producer Price Differential: The Central Federal Order Producer Price Differential at Jackson County MO was **-\$0.07** per hundredweight during May 2018. The May 2018 PPD was **up \$0.06** from the previous month, but **no change** from May 2017. The May 2018 Statistical Uniform Price was **\$15.11** and is published for informational purposes only.

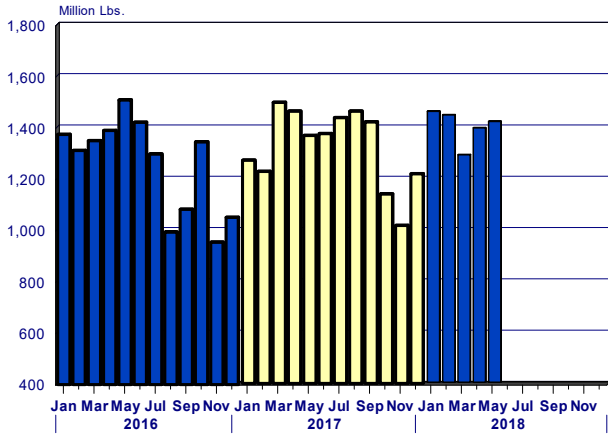
Protein Price: The May 2018 Protein Price was **\$1.8609** per pound which was **up \$0.0799** from the previous month, and **up \$0.0886** from May 2017. The average protein content of producer milk pooled on the order was **3.11** percent during May 2018.



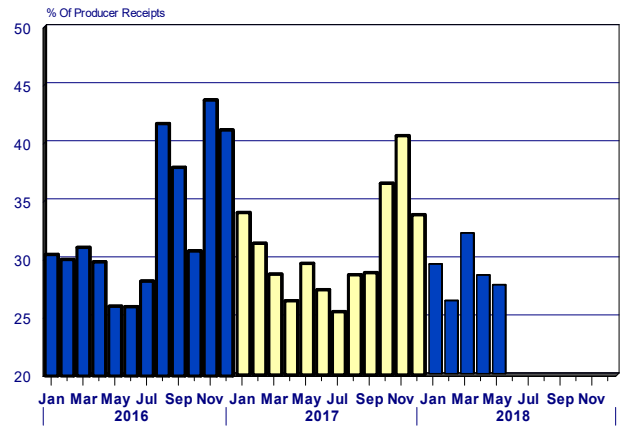
Butterfat Price: The May 2018 Butterfat Price was **\$2.6239** per pound which was **up \$0.1126** from the previous month, and **up \$0.2105** from May 2017. The average butterfat content of producer milk pooled on the order was **3.78** percent during May 2018.

Other Solids Price: The May 2018 Other Solids Price was **\$0.0742** per pound which was **up \$0.0123** from the previous month, but **down \$0.2454** from May 2017. The average Other Solids content of producer milk pooled on the order was **5.78** percent during May 2018.

Total Producer Receipts



Class I Utilization

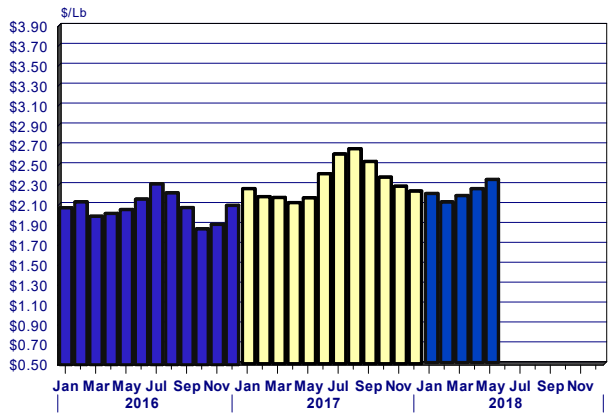


Producer Receipts: Grade "A" producer milk pooled on the Central Federal order totaled **1,416.6** million pounds during May 2018. This was a **decrease** of **1.50** percent compared with **1,391.7** million pounds pooled during April 2018, but an **increase** of **3.66** percent compared with **1,366.5** million pounds pooled during May 2017.

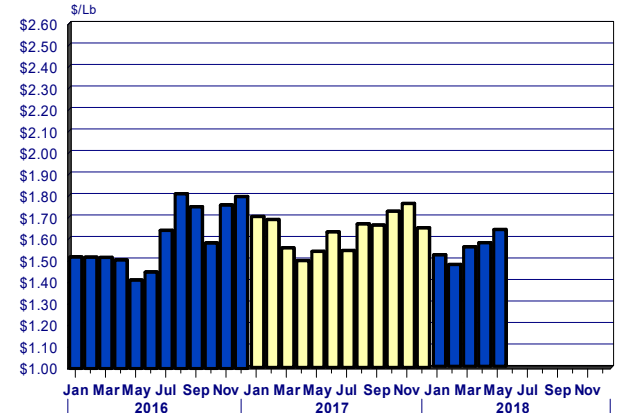
Class I Utilization: Producer milk utilized as Class I accounted for **27.65** percent of the total milk pooled on the Central Federal order during May 2018. This compares with **28.49** percent during April 2018 and **29.59** percent during May 2017.

WEIGHTED AVERAGE AMS PRODUCT PRICES USED IN CALCULATING COMPONENT PRICES

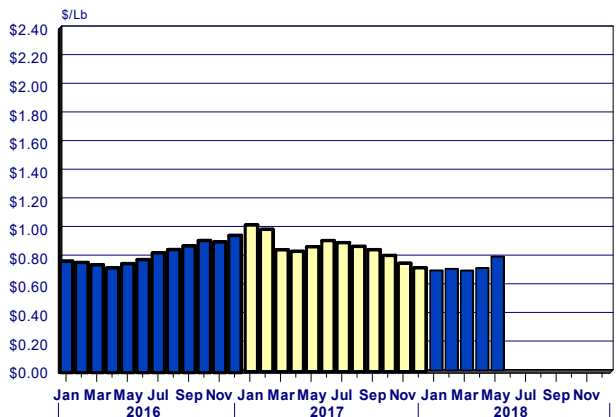
Butter



Cheese



Nonfat Dry Milk



Dry Whey

