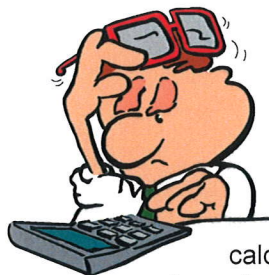
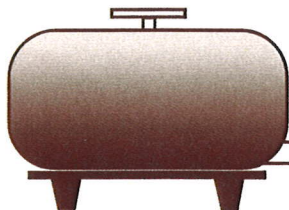


MARKETING SERVICE

B U L L E T I N

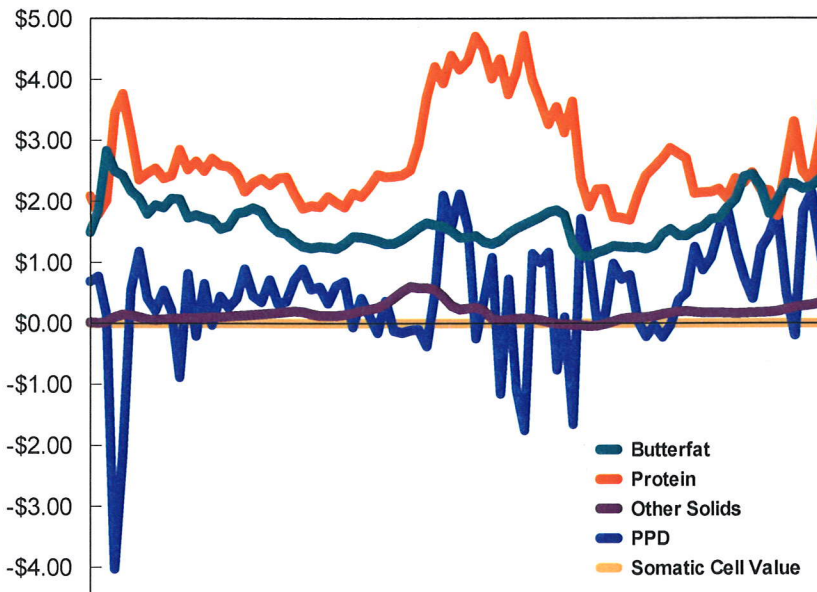


How Do I Know My "Pay Price" When Component Prices Look Like This ?



A long time ago, in a Federal Milk Order system far different from today, the calculation of each dairy farmer's monthly "pay price" was a relatively straightforward task. In the era prior to the advent of multiple component pricing, each Federal Milk Order (FMO) announced a single producer pay price known as the Uniform Price. This price, also known as the "Blend" Price, was applicable to all producer milk with only one adjustment - the Butterfat Differential. This adjustment was applicable to each producer's per hundredweight price based upon the butterfat content of milk marketed. In this bygone era each producer could readily make revenue comparisons by simply examining monthly Uniform Prices (adjusted for variances in butterfat content).

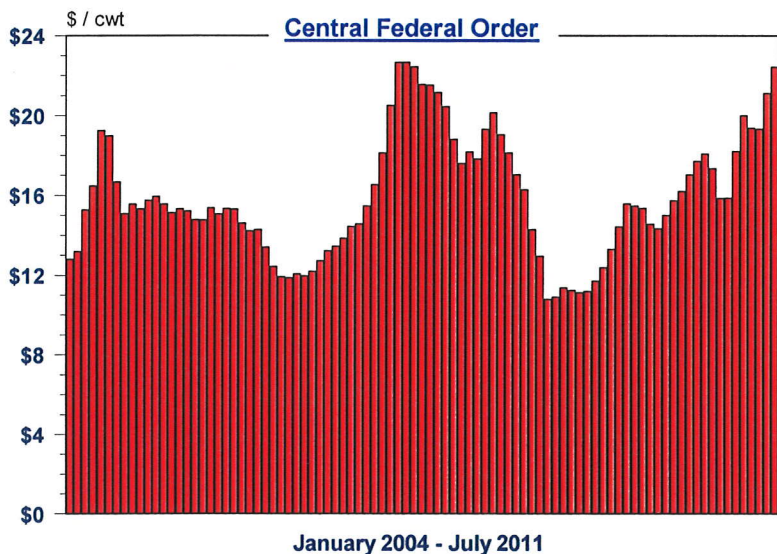
Central Order Component Values
January 2004 - July 2011



Congressionally-mandated FMO reforms were implemented on January 1, 2000. Consolidation and reduction of FMOs from 31 to 11 was one major feature of this reform¹. Another significant feature eliminated Uniform Prices, adjusted by the Butterfat Differential, in some orders². Four of the post-reform FMOs continued pricing two components - skim and butterfat - and these orders continued to announce a Uniform Price. However, this price was based on a *per hundredweight* Uniform Skim Price and a *per pound* Uniform Butterfat Price, rather than a per hundredweight price adjusted by the Butterfat Differential. The remaining seven orders implemented a multiple component pricing system based on per pound prices for butterfat, protein, and other solids. These seven FMOs also included a Producer Price Differential (PPD) applied on a per hundredweight basis.

Four of these orders also incorporated a per hundredweight adjustment based on the somatic cell count of producer milk.

Effective Value of Producer Milk
@ 3.67% BF; 3.10% Protein; 5.70% OS; 330,000 SCC



The Central FMO is one of the four post-reform orders that implemented multiple component pricing with a somatic cell adjustment factor. Revenue calculations for Central Order producers must include all priced components to accurately reflect total revenue generated. Failure to include all components can result in erroneous revenue estimations since prices for the various components often run counter to one another, as

¹ The number of FMOs was further reduced to 10 in April 2004 with the termination of the Western Order.
² Several orders discontinued using Uniform Prices, adjusted by the Butterfat Differential, prior to FMO

AUGUST 2011



illustrated by the top graph on page 1. The bottom graph on page 1 depicts the effective pay price for a "typical" Central Order producer³ using all the component prices depicted in the top graph on page 1.

What about the PPD ??? The PPD represents, on a per hundredweight basis, total dollars accumulated by the marketwide pool minus the amount paid to producers for priced components. The value of milk used in Class I is usually the largest contributor to the PPD. Although the PPD tends to receive the most attention, it is only one part of a producer's total revenue equation. Over the past 139 months (January 2000 - July 2011), the PPD's proportion of a "typical" Central Order producer's total revenue averaged slightly more than 4%, as indicated by the bottom graph on page 4.

The graphics and tables in this bulletin illustrate how the PPD relates to dairy producers' FMO pay price. Examining only one particular milk check component may yield inaccurate impressions. Often when the PPD declines total revenue increases due to changes in the other priced components. For example, the largest monthly decrease in the PPD was \$4.16 between March and April 2004. The corresponding change in total revenue for our "typical" producer was an increase of over \$2,300. Moreover, total revenue in May 2004 reached its highest level, up to that point in time, with an effective price of \$19.24. This occurred even though the PPD was -\$2.18, the second lowest level ever. Circumstances such as these make it necessary to understand how each of the components in a milk check are priced, and how these prices relate to one another. Relationships among the FMO-priced components are illustrated by the graphics and tables in this bulletin.

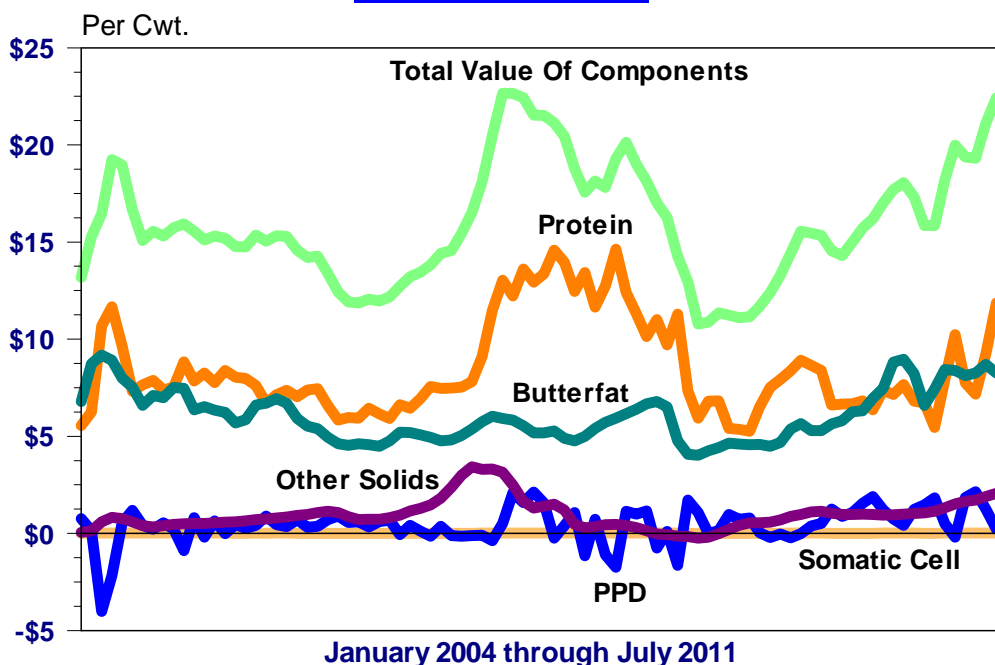
Central FMO Component Prices : The tables on page 5 provide historical data for Central FMO producer component prices and revenue since FMO reform in January 2000. Yearly averages for components and total revenue, along with the effective uniform price, are detailed in the first table, while the remaining two tables detail monthly high and low prices for these items.

The top graph on this page details movements in the PPD versus total revenue for our "typical" producer from January 2004 through July 2011. A sample format used in calculating total producer revenue is provided below the graph on page 3.

Component Values in 100 lbs. of Producer Milk

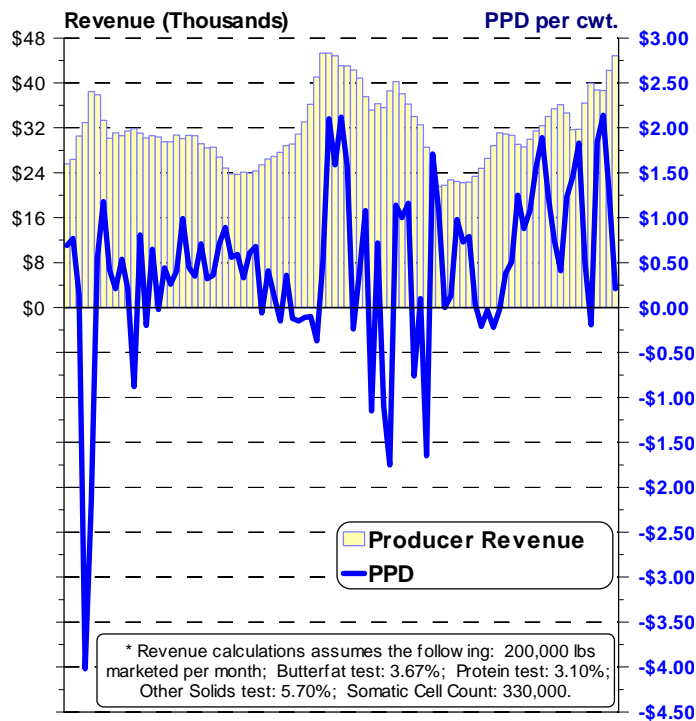
@ 3.67%BF; 3.10%Protein; 5.70%OS; 330,000 SCC

Central Federal Order



Central FMO Comparisons

Producer Revenue* versus the Producer Price Differential



January 2004 thru July 2011

* Revenue calculations assumes the following: 200,000 lbs marketed per month; Butterfat test: 3.67%; Protein test: 3.10%; Other Solids test: 5.70%; Somatic Cell Count: 330,000.

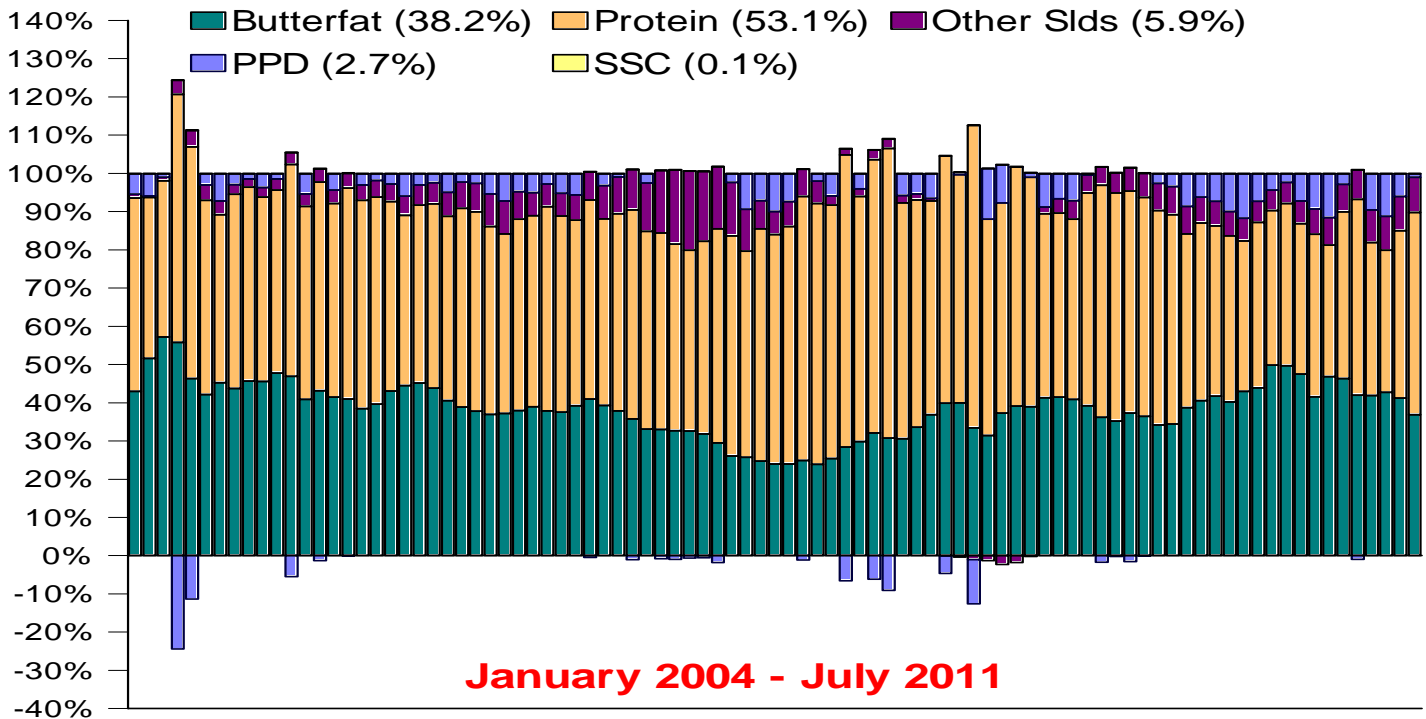
previously noted, changes in the PPD and total revenue are not highly correlated and often move in opposite directions. The lower graph on this page depicts the monthly value of each priced component in 100 pounds of milk.

Effective uniform price data, on a yearly basis, are detailed by the top graph on page 4. The remaining graph on page 4 provides data regarding the proportion of total value represented by each priced component from January 2000 through July 2011. As indicated, protein (52.02%) and butterfat (38.74%) have accounted for over 90% of our "typical" Central order producer's total revenue since FMO reform.

³ A "typical" producer is defined as follows: Monthly marketings -- 200,000 pounds; Butterfat test -- 3.67%; Protein test -- 3.10%; Other Solids test -- 5.70%; Somatic Cell Count -- 330,000.

Component Values as a % of 100 Lbs. of Producer Milk @ 3.67%BF, 3.10%Protein, 5.70%OS, 330,000 SCC

Central Federal Order



A Look At How You Can Calculate Your Pay Price

Assume a dairy producer with :

200,000 pounds of marketings
3.67% Butterfat test
3.10% Protein test
5.70% Other Solids test
Producer Price Differential (PPD)
330,000 Somatic Cell Count

Jul '11 Prices:

\$2.2511 / lb
\$3.8292 / lb
\$0.3608 / lb
\$0.21 / cwt
\$0.00106 / 100,000 cells / cwt

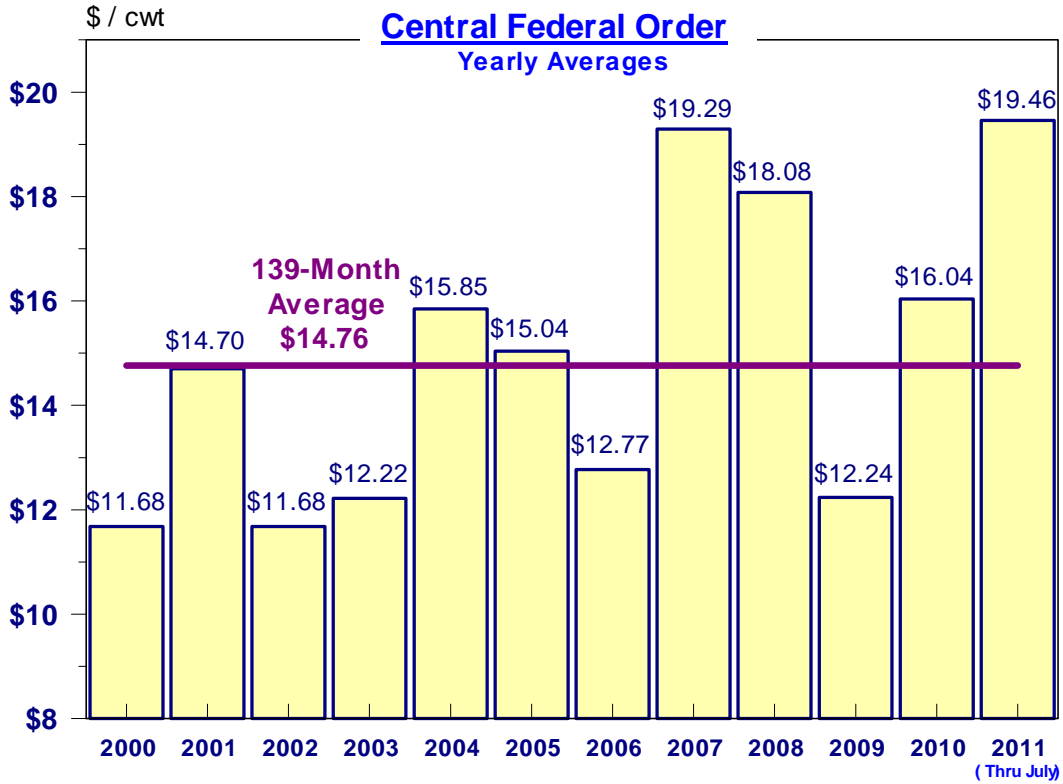
<u>Component</u>	<u>Average Tests</u>	<u>Hundred-Weights</u>	<u>Component Pounds Marketed</u>	<u>October '07 Component Prices</u>	<u>Total Value</u>
Butterfat	3.67	x 2,000	= 7,340	x \$2.2511	= \$16,523.07
Protein	3.10	x 2,000	= 6,200	x \$3.8292	= \$23,741.04
Other Solids	5.70	x 2,000	= 11,400	x \$0.3608	= \$ 4,113.12
PPD		2,000		x \$0.21	= \$ 420.00
Somatic Cell Count (Calculate Adjuster) (350-330=20)	330,000				
	20	x \$0.00106	= \$0.02	x 2,000	= \$40.00

Total Federal Order Value Of Milk Marketed : July 2011
Effective Price Per Hundredweight

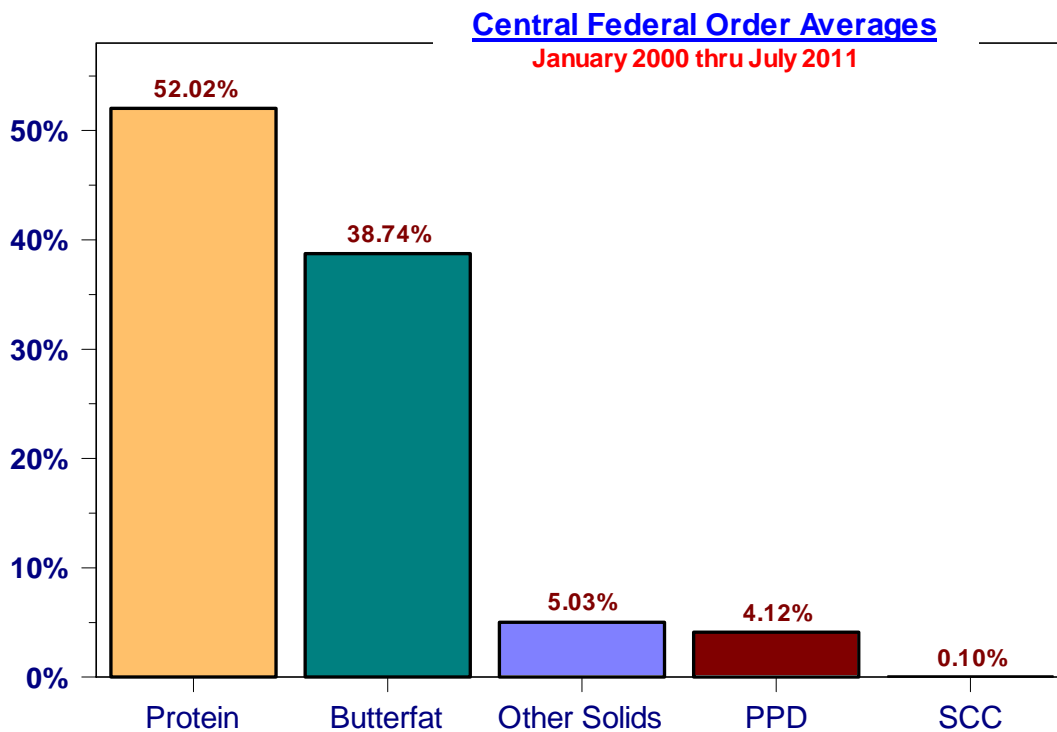
\$44,837.23
\$22.42

Note: The Central order July 2011 Statistical Uniform Price was announced at \$21.60. This price is published at 3.5% BF, 2.99% Protein, and 5.69% Other Solids. Individual producers should be aware their price can vary from the announced Statistical Uniform Price. In the above example, the price is 82¢ above the published price.

Effective Value of Producer Milk
 @ 3.67%BF; 3.10%Protein; 5.70%OS; 330,000 SCC



Component Values as a % of 100 lbs. of Producer Milk
 @ 3.67%BF; 3.10%Protein; 5.70%OS; 330,000 SCC



Central Federal Milk Order Data

YEARLY AVERAGES	Butterfat Price	Protein Price	Other Solids Price	PPD	SCC Rate	Total Value	Effective Price
2000	\$1.2522	\$1.6938	\$0.0509	\$1.53	\$0.00057	\$23,355.94	\$11.68
2001	\$1.8480	\$1.9613	\$0.1343	\$1.06	\$0.00071	\$29,409.78	\$14.70
2002	\$1.1928	\$1.9735	\$0.0593	\$0.84	\$0.00059	\$23,368.18	\$11.68
2003	\$1.2099	\$2.3770	\$0.0129	\$0.33	\$0.00065	\$24,448.13	\$12.22
2004	\$2.0510	\$2.6035	\$0.0751	\$-0.20	\$0.00082	\$31,694.06	\$15.85
2005	\$1.7105	\$2.4602	\$0.1228	\$0.42	\$0.00075	\$30,085.27	\$15.04
2006	\$1.3252	\$2.0912	\$0.1745	\$0.42	\$0.00062	\$25,542.74	\$12.77
2007	\$1.4693	\$3.5121	\$0.4201	\$0.60	\$0.00087	\$38,576.96	\$19.29
2008	\$1.5668	\$3.8898	\$0.0555	\$-0.07	\$0.00095	\$36,153.65	\$18.08
2009	\$1.2571	\$2.2087	\$0.0612	\$0.41	\$0.00065	\$24,470.65	\$12.24
2010	\$1.8535	\$2.3091	\$0.1777	\$1.05	\$0.00076	\$32,079.49	\$16.04
2011 *	\$2.2413	\$2.7488	\$0.2836	\$1.08	\$0.00089	\$38,929.28	\$19.46
139-Month Average	\$1.5577	\$2.4763	\$0.1303	\$0.61	\$0.00073	\$29,515.99	\$14.76

139-Month Highs **

Butterfat (April '04)	\$2.5013	\$3.4465	\$0.1042	\$-4.02	\$0.00103	\$32,915.72	\$16.46
Protein (June '08)	\$1.6160	\$4.7193	\$0.0826	\$-1.75	\$0.00108	\$38,602.74	\$19.30
Other Solids (April '07)	\$1.4657	\$2.5212	\$0.6008	\$-0.11	\$0.00071	\$33,038.80	\$16.52
PPD (November '00)	\$1.5745	\$0.9149	\$0.0565	\$2.28	\$0.00051	\$22,453.31	\$11.23
SCC (June '08)	\$1.6160	\$4.7193	\$0.0826	\$-1.75	\$0.00108	\$38,602.74	\$19.30
Total Value (August '07)	\$1.5872	\$3.9412	\$0.4368	\$2.10	\$0.00096	\$45,305.01	\$22.65
Effective Price (August '07)	\$1.5872	\$3.9412	\$0.4368	\$2.10	\$0.00096	\$45,305.01	\$22.65

139-Month Lows **

Butterfat (January '00)	\$0.9366	\$2.1677	\$0.0503	\$1.18	\$0.00058	\$23,267.80	\$11.63
Protein (November '00)	\$1.5745	\$0.9149	\$0.0565	\$2.28	\$0.00051	\$22,453.31	\$11.23
Other Solids (February '09)	\$1.0941	\$1.9139	\$-0.0437	\$1.07	\$0.00058	\$21,558.69	\$10.78
PPD (April '04)	\$2.5013	\$3.4465	\$0.1042	\$-4.02	\$0.00103	\$32,915.72	\$16.46
SCC (November '00)	\$1.5745	\$0.9149	\$0.0565	\$2.28	\$0.00051	\$22,453.31	\$11.23
Total Value (March '03)	\$1.1459	\$1.6648	\$0.0206	\$0.97	\$0.00054	\$20,927.51	\$10.46
Effective Price (March '03)	\$1.1459	\$1.6648	\$0.0206	\$0.97	\$0.00054	\$20,927.51	\$10.46

* Through July. ** Highlighted data represents the 139-month high/low for each category. The accompanying data for each category is applicable to the specified month in which the high/low was recorded.

	Statistical Uniform Price		Producer Price Differential		Class I Utilization	
	<u>Jul '11</u>	<u>Jun '11</u>	<u>Jul '11</u>	<u>Jun '11</u>	<u>Jul '11</u>	<u>Jun '11</u>
Northeast	22.76	22.09	1.37	2.98	38.72	38.97
Appalachian	23.35	22.90	-----	-----	66.39	63.55
Florida	25.44	25.04	-----	-----	84.81	82.42
Southeast	23.69	22.93	-----	-----	64.06	61.71
Upper Midwest	21.60	19.58	0.21	0.47	11.35	11.60
Central	21.60	20.36	0.21	1.25	26.88	27.26
Mideast	21.91	20.80	0.52	1.69	33.87	36.34
Pacific Northwest	21.34	20.60	-0.05	1.49	23.44	25.14
Southwest	22.56	21.50	1.17	2.39	35.20	32.31
Arizona	21.58	21.02	-----	-----	31.12	28.05

The U.S. Department of Agriculture (USDA) prohibits discrimination in all its programs and activities on the basis of race, color, national origin, age, disability, and where applicable, sex, marital status, familial status, parental status, religion, sexual orientation, political beliefs, genetic information, reprisal, or because all or part of an individual's income is derived from any public assistance program. (Not all prohibited bases apply to all programs.) Persons with disabilities who require alternative means for communication of program information (Braille, large print, audiotape, etc.) should contact USDA's TARGET Center at (202) 720-2600 (voice and TDD).

To file a complaint of discrimination write to USDA, Assistant Secretary for Civil Rights, Office of the Assistant Secretary for Civil Rights, 1400 Independence Avenue, S.W., Stop 9410, Washington, D.C. 20250-9410, or call (866) 632-9992 (English) or (800) 877-8339 (TDD) or (866) 377-8642 (English Federal-relay) or (800) 845-6136 (Spanish Federal-relay). USDA is an equal opportunity provider and employer.



FIRST CLASS
 U.S. POSTAGE
 PAID
 SHAWNEE MISSION, KS
 PERMIT NO. 377

FEDERAL MILK MARKET ADMINISTRATOR
 P.O. BOX 14650
 SHAWNEE MISSION, KANSAS 66285-4650

FIRST CLASS

Website: www.fmmacentral.com
 E-mail: market.administrator@fmmacentral.com
 Phone: 913-495-9300