

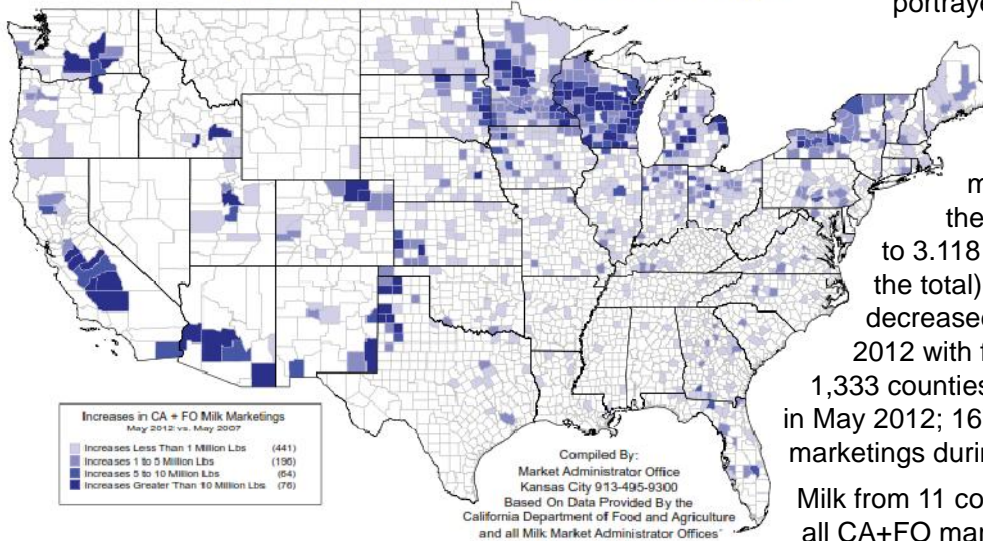
MARKETING SERVICE

BULLETIN

California & Federal Order Milk Marketing Data*

This Bulletin details California & Federal order milk marketings by county for May 2012 and includes comparisons with May 2007. The top map on this page depicts counties with CA+FO marketing increases compared with five years earlier, while counties that decreased marketings are portrayed in the lower map.

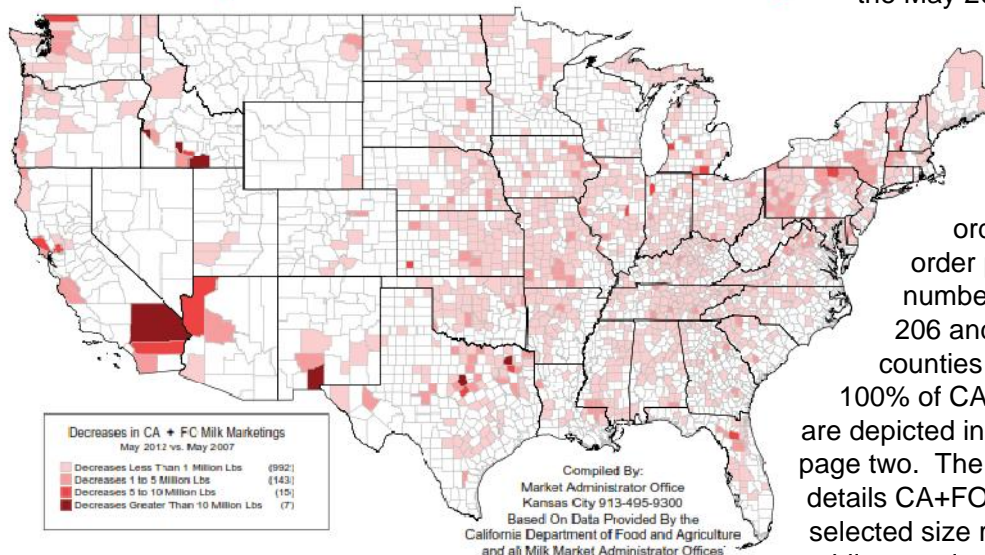
777 Counties Increased Marketings



Milk marketings from 777 counties with increases totaled 12.407 billion pounds during May 2012. These marketings represent 79.92% of the CA+FO total. This compares to 3.118 billion pounds (20.08% of the total) from 1,157 counties that decreased marketings, comparing May 2012 with five years earlier. There were 1,333 counties with no CA+FO marketings in May 2012; 167 of these counties had marketings during May 2007.

Milk from 11 counties accounted for 25% of all CA+FO marketings during May 2012, which is an increase of one county from the number marketing 25% during May 2007. Seven of the top 11 counties are located in California, with Tulare (CA) county's 1.016 billion pounds leading the way. Marketings from this county represent 6.54% of the CA+FO May 2012 total. To put this in perspective, it requires the combined marketings of 1,221 counties with the lowest marketings to surpass the Tulare county total. The 11 counties that represent 25% of the CA+FO total for May 2012 are depicted in the top left map on page two, and in the table at the bottom of the page.

1,157 Counties Decreased Marketings

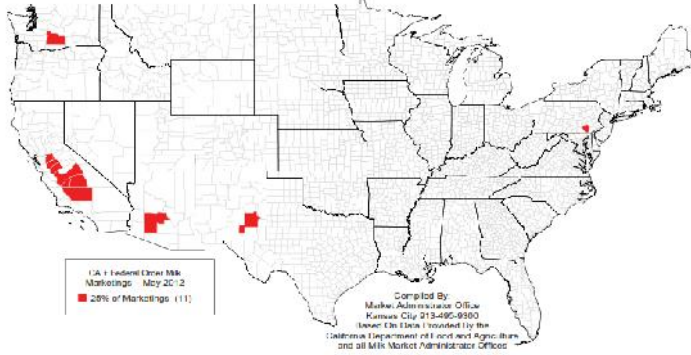


As indicated by the top right map on page two, 57 counties marketed 50% of the May 2012 CA+FO total, down one county from May 2007. In May 2012 a total of 193 counties marketed 75% of the total, while 1,767 counties had milk marketings under the Federal order and the California state order programs. The comparable number of counties for May 2007 were 206 and 1,854, respectively. The counties representing 75% and 100% of CA+FO milk marketings are depicted in the lower two maps on page two. The map on page three details CA+FO milk marketings by selected size ranges for May 2012, while counties with no CA+FO milk marketings are depicted in the map on the last page of this bulletin.

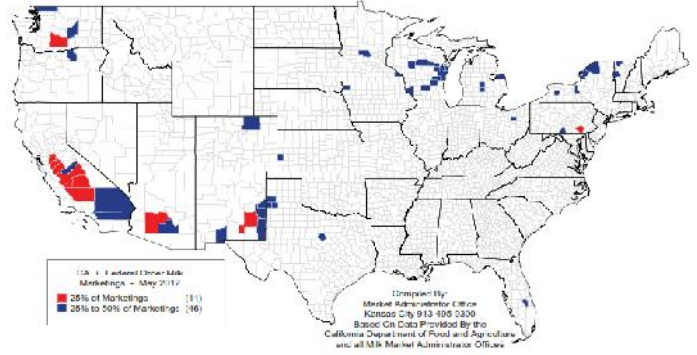
OCTOBER 2012



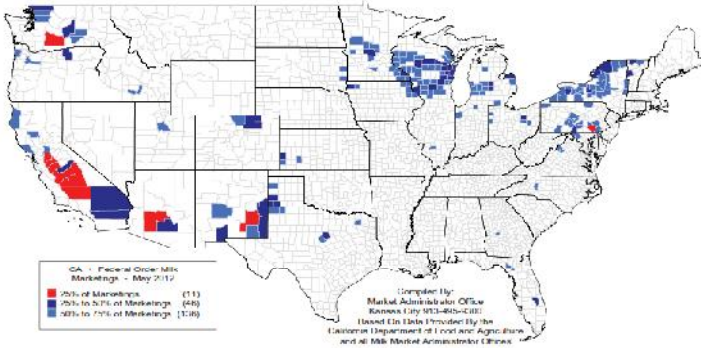
11 Counties Marketed 25% of All CA + Federal Order Milk During May 2012



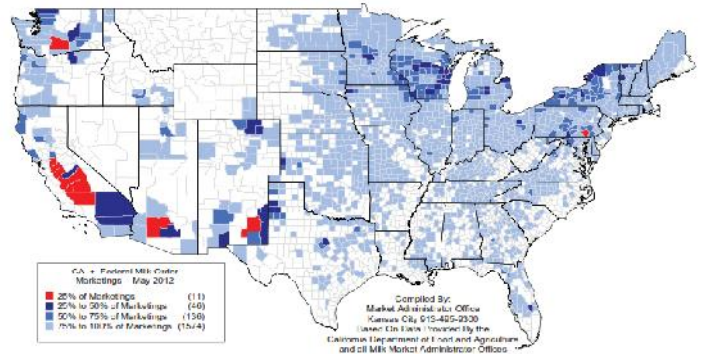
57 Counties Marketed 50% Of All CA + Federal Order Milk During May 2012



193 Counties Marketed 75% Of All CA + Federal Order Milk During May 2012



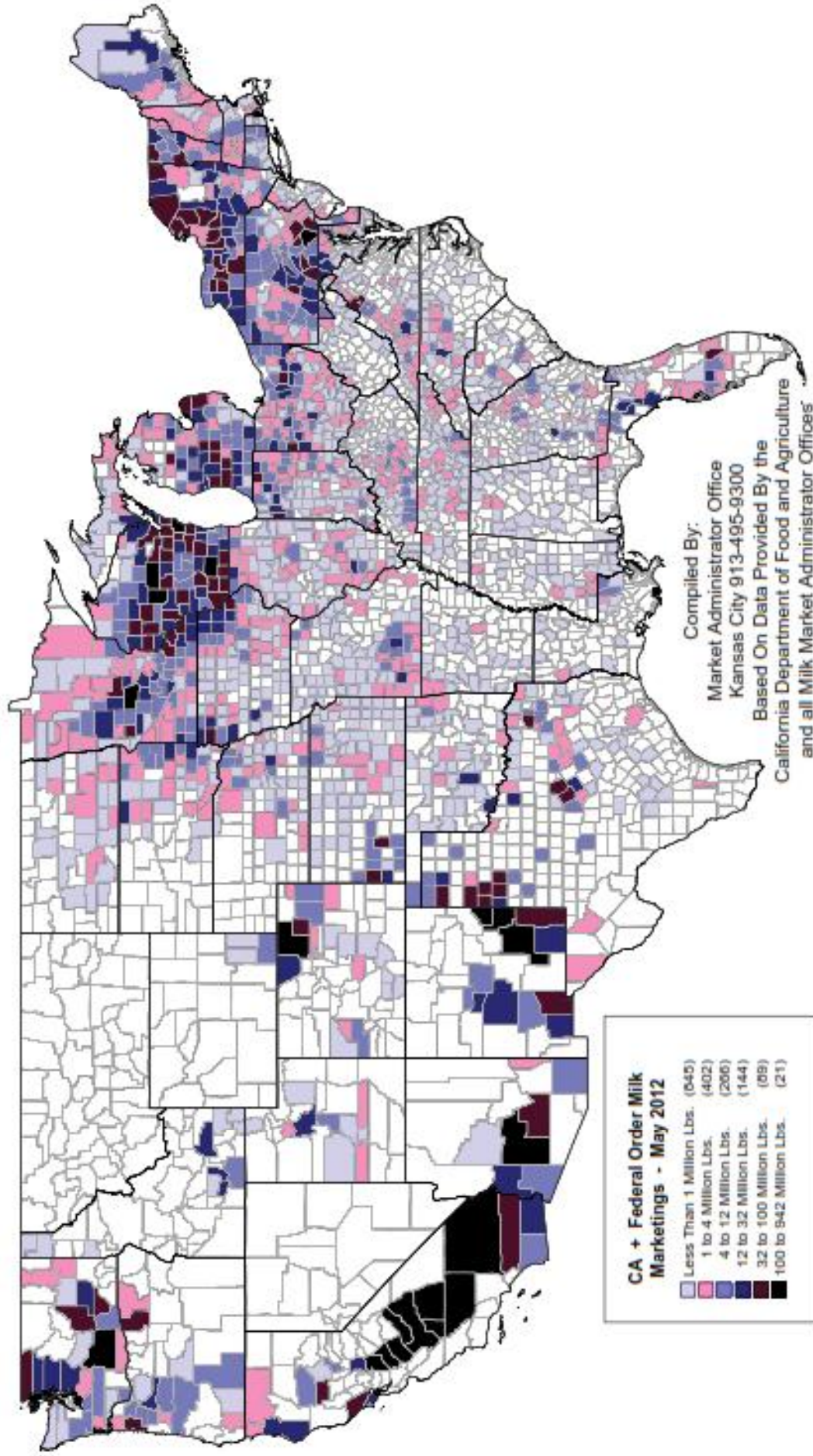
1767 Counties Marketed 100% Of All CA + Federal Order Milk During May 2012



Eleven Counties Marketed 25% Of The CA + Federal Order Milk During May 2012

	<u>May 2012 Mktgs</u>	<u>May 2007 Mktgs</u>	<u>Percent Change</u>	<u>Percentage of May 2012 Total</u>
1. Tulare, CA	1,015,830,923	890,476,707	+14.08	6.54
2. Merced, CA	517,298,213	450,793,146	+14.75	3.33
3. Stanislaus, CA	379,512,658	331,367,338	+14.53	2.44
4. Kings, CA	379,194,644	327,311,696	+15.85	2.44
5. Kern, CA	366,047,835	326,495,592	+12.11	2.36
6. Maricopa, AZ	337,173,415	273,371,446	+23.34	2.17
7. Fresno, CA	238,621,565	231,819,288	+2.93	1.54
8. Yakima, WA	227,209,885	185,644,540	+22.39	1.46
9. San Joaquin, CA	209,922,044	205,386,968	+2.21	1.35
10. Lancaster, PA	198,159,121	197,932,193	+0.11	1.28
11. Chaves, NM	173,711,014	174,579,212	-0.50	1.12
11 - County Total	4,042,681,317	3,595,178,126	+12.45	26.04
CA + FO Total	15,524,864,196	13,380,640,691	+16.02	

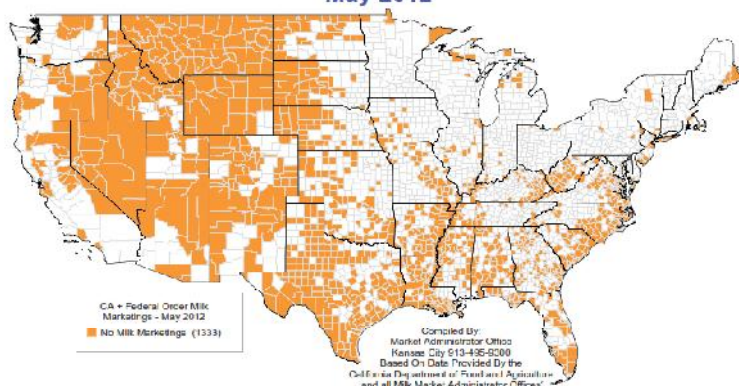
CA + Federal Order Milk Marketings By County May 2012



* The Western order was terminated April 1, 2004, resulting in a significant volume of milk in Idaho and Utah no longer being included in this data series.

	Statistical Uniform Price		Producer Price Differential		Class I Utilization	
	Sep '12	Aug '12	Sep '12	Aug '12	Sep '12	Aug '12
Northeast	19.45	18.40	0.45	0.67	40.71	39.65
Appalachian	20.32	19.32	-----	-----	69.44	72.49
Florida	22.40	21.46	-----	-----	85.11	86.67
Southeast	20.87	19.95	-----	-----	69.87	75.09
Upper Midwest	18.86	17.69	-0.14	-0.04	15.06	14.50
Central	18.37	17.43	-0.63	-0.30	47.68	47.17
Mideast	18.53	17.47	-0.47	-0.26	40.43	40.02
Pacific Northwest	18.17	17.13	-0.83	-0.60	40.66	43.41
Southwest	19.38	18.54	0.38	0.81	67.45	64.12
Arizona	18.94	17.69	-----	-----	37.17	37.46

Counties With No CA + Federal Order Milk Marketings
May 2012



The U.S. Department of Agriculture (USDA) prohibits discrimination in all its programs and activities on the basis of race, color, national origin, age, disability, and where applicable, sex (including gender identity and expression), marital status, familial status, parental status, religion, sexual orientation, political beliefs, genetic information, reprisal, or because all or part of an individual's income is derived from any public assistance program. (Not all prohibited bases apply to all programs.) Persons with disabilities who require alternative means for communication of program information (Braille, large print, audiotape, etc.) should contact USDA's TARGET Center at (202) 720-2600 (voice and TDD).

To file a complaint of discrimination, write to USDA, Assistant Secretary for Civil Rights, Office of the Assistant Secretary for Civil Rights, 1400 Independence Avenue, S.W., Stop 9410, Washington, D.C. 20250-9410. Or call toll-free at (866) 632-9992 (English) or (800) 877-8339 (TDD) or (866) 377-8642 (English Federal-relay) or (800) 845-6136 (Spanish Federal-relay). USDA is an equal opportunity provider and employer. (TDD) or (866) 377-8642 (English Federal-relay) or (800) 845-6136 (Spanish Federal-relay). USDA is an equal opportunity provider and employer.



FIRST CLASS
U.S. POSTAGE
PAID
SHAWNEE MISSION, KS
PERMIT NO. 377

FEDERAL MILK MARKET ADMINISTRATOR
P.O. BOX 14650
SHAWNEE MISSION, KANSAS 66285-4650

FIRST CLASS

Website: www.fmmacentral.com
E-mail: market.administrator@fmmacentral.com
Phone: 913-495-9300