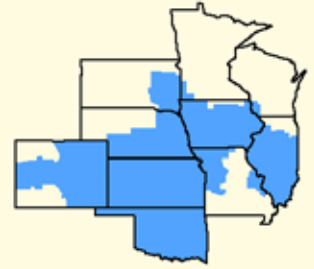


# Bulletin

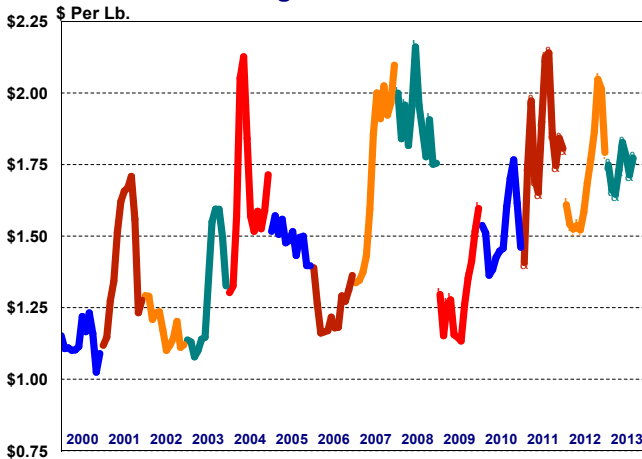
Facilitating the efficient marketing of milk and dairy products.



**CENTRAL MARKETING AREA**



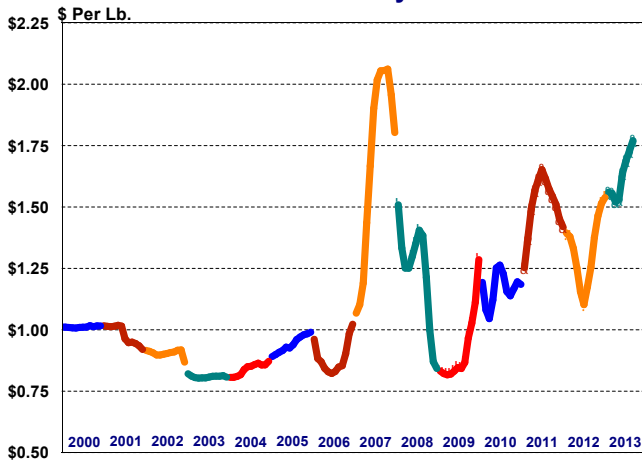
**AMS / NASS Wtd. Avg. Block/Barrel Cheese Prices\***



A variety of economic factors affecting the U.S. dairy industry are illustrated by the graphs in this bulletin. These graphs depict monthly data for 15 selected factors from January 2000 through August of this year. A cursory examination of this data indicates an environment characterized by a great deal of uncertainty and price volatility over the past 14 years.

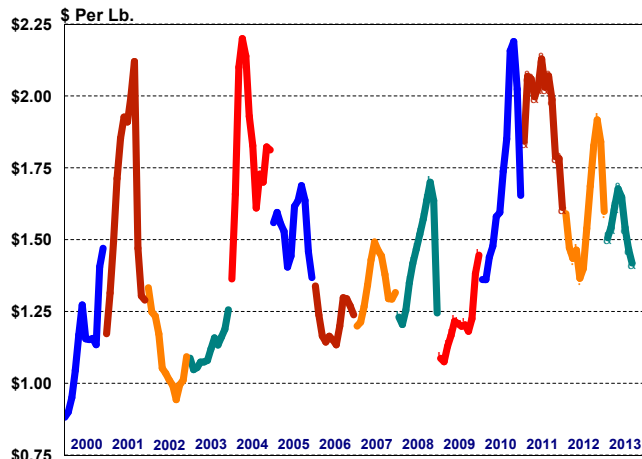


**AMS / NASS Nonfat Dry Milk Prices\***



While several of the price series depicted in this bulletin reached record highs in either 2007 or 2008, some declined during 2009 to the lowest levels recorded during the period represented by these graphs. This decline preceded a sharp upward trend that peaked in mid-to-late 2011 for several of these data series. A steep decline followed the 2011 peak; however, many price series have posted increases since late 2012.

**AMS / NASS Butter Prices\***

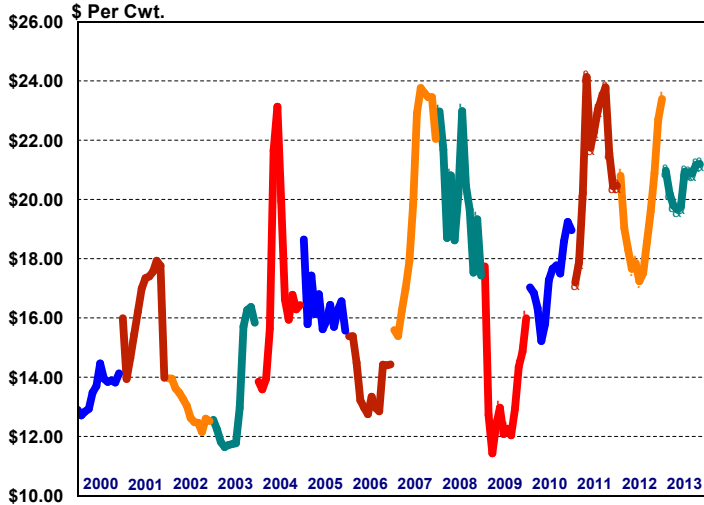


Exceptions to the general trends note in the previous paragraph are depicted by the last five graphs on page three. The graphs depicting soybean, corn, and beef & dairy slaughter prices indicate a strong positive trend prevalent since late 2005 for corn, and late 2006 for soybeans and cattle slaughter prices. These prices have all declined, however, after peaking in 2012. Class I producer receipts, depicted in the third graph on page three, indicates a declining trend since 2009. Milk production is portrayed in the bottom left graph, and indicates an overall increasing trend since 2001.

The graphs on this page illustrate three Agricultural Marketing Service (AMS) / National Agricultural Statistic Service (NASS) commodity price series\* that have a direct impact on Federal Milk Order (FMO) minimum prices. The six graphs on page two along with the first graph on page three depict FMO prices applicable to dairy farmers and/or regulated milk processors. A variety of factors that directly and indirectly influence the economic environment for milk production and processing are portrayed by the remaining graphs on page three.

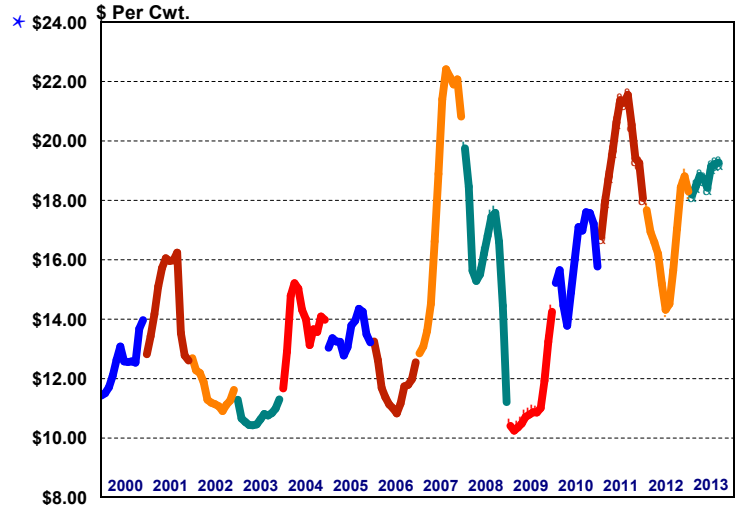
\*NASS prices prior to April 2012.

**Federal Order Class I Price (\$2.00 Differential)**

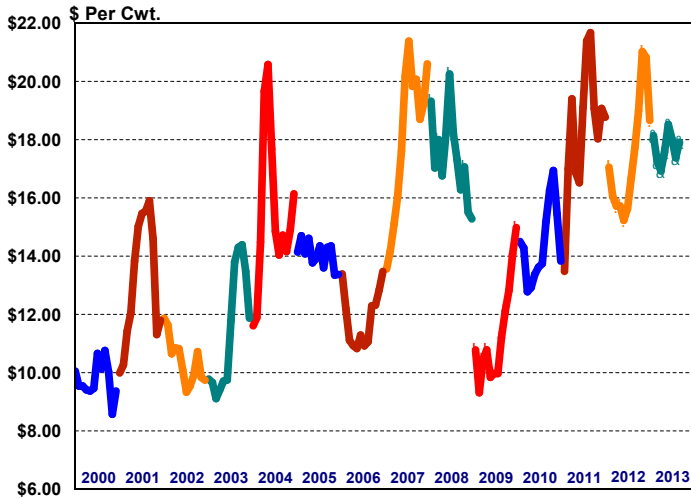


\* Through October 2012

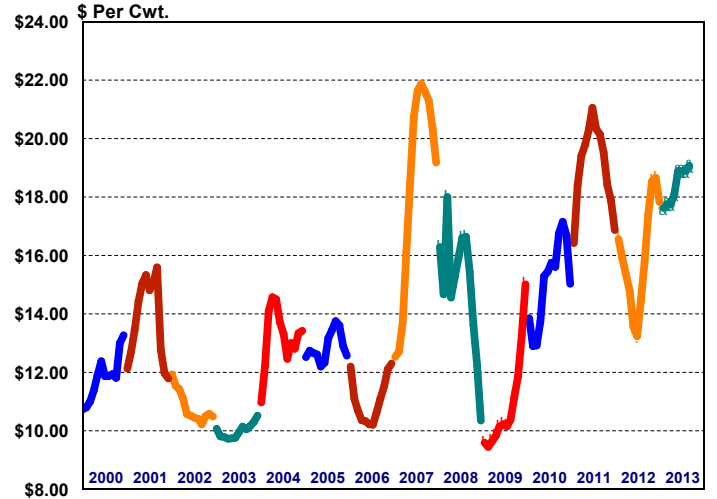
**Federal Order Class II Price**



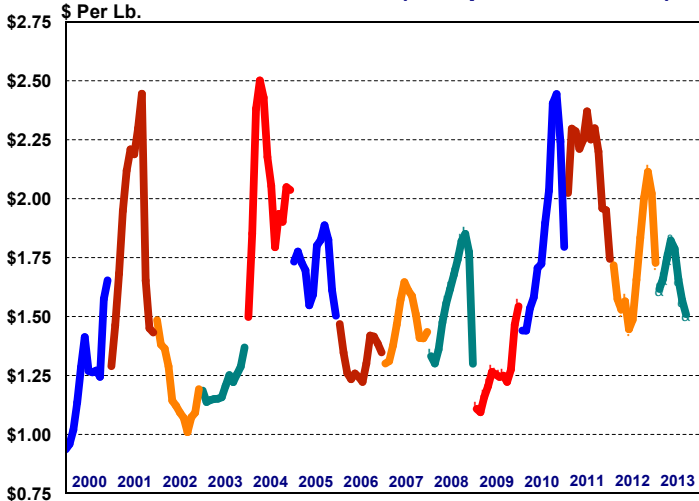
**Federal Order Class III Price**



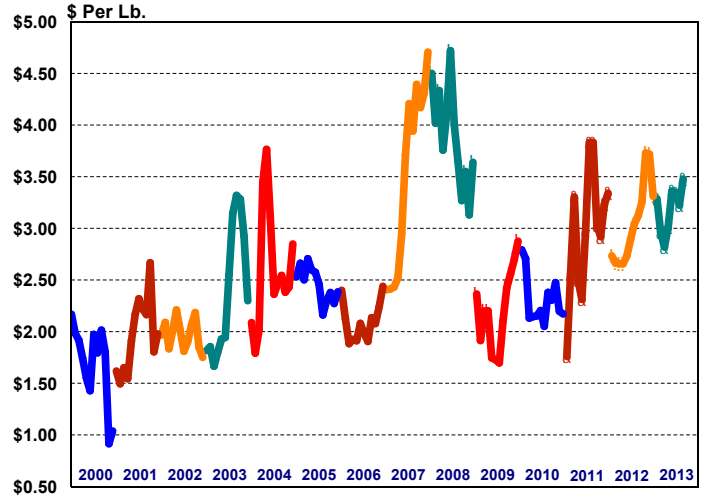
**Federal Order Class IV Price**



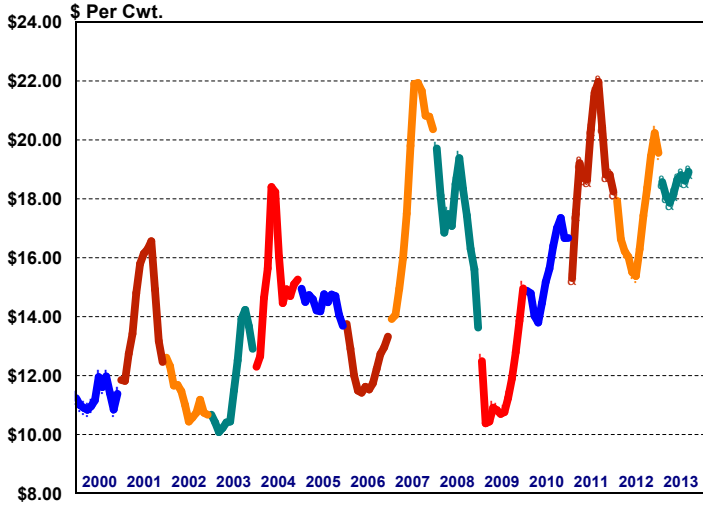
**Producer Butterfat Price (component orders)**



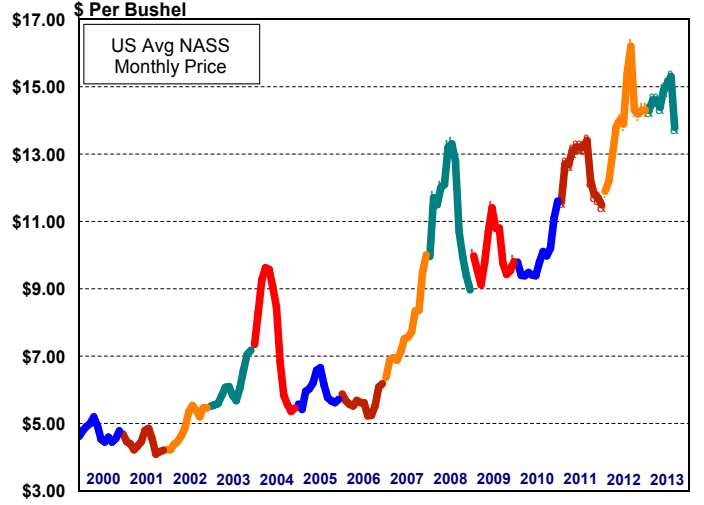
**Producer & Handler Protein Price**



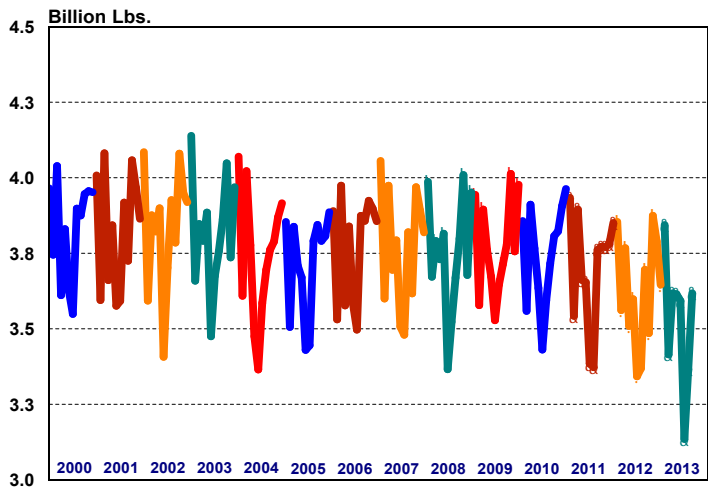
**Central Federal Order Statistical Blend Price**



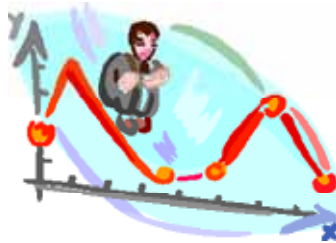
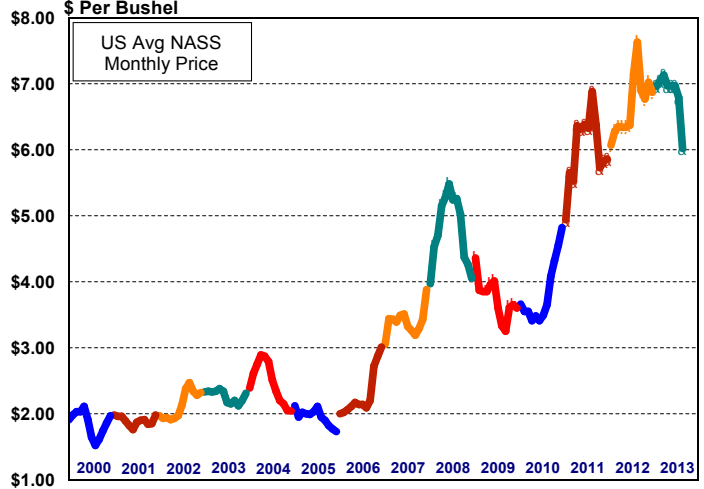
**Soybeans - US Avg Prices**



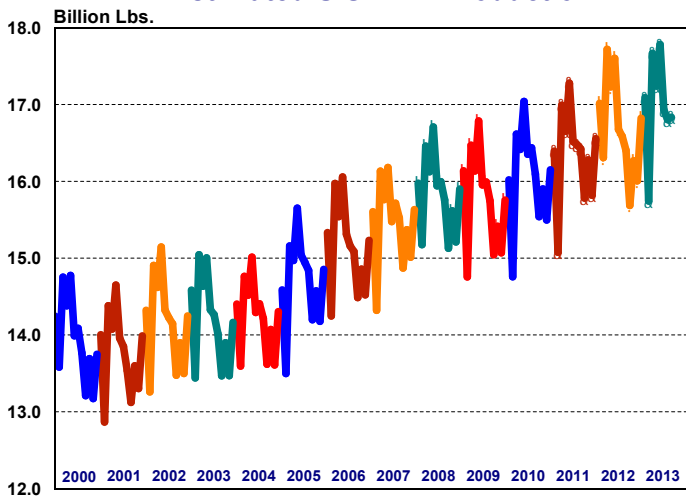
**Class I Producer Receipts (All Federal Milk Orders)**



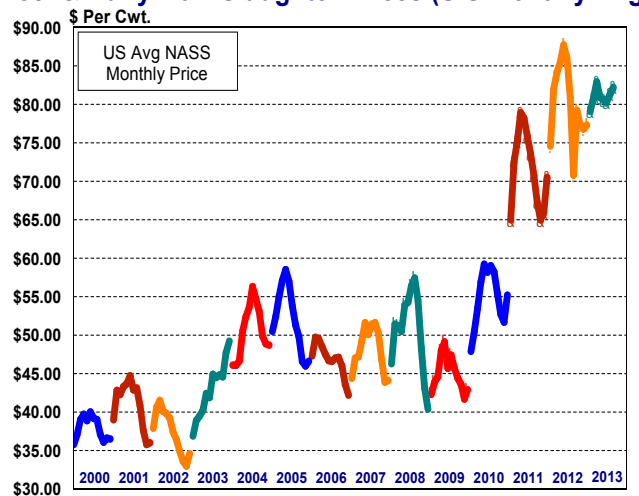
**Corn for Grain - U.S. Avg Prices**



**Estimated U.S. Milk Production**



**Beef & Dairy Cow Slaughter Prices (U.S. Monthly Avg.)**





**United States  
Department of  
Agriculture**

FIRST CLASS  
U.S. POSTAGE  
PAID  
SHAWNEE MISSION, KS  
PERMIT NO. 377

**FEDERAL MILK MARKET ADMINISTRATOR**  
P.O. BOX 14650  
SHAWNEE MISSION, KANSAS 66285-4650

**FIRST CLASS**

Website: [www.fmmacentral.com](http://www.fmmacentral.com)  
E-mail: [market.administrator@fmmacentral.com](mailto:market.administrator@fmmacentral.com)  
Phone: 913-495-9300

	Statistical Uniform Price		Producer Price Differential		Class I Utilization	
	<u>Aug '13</u>	<u>Jul '13</u>	<u>Aug '13</u>	<u>Jul '13</u>	<u>Aug '13</u>	<u>Jul '13</u>
Northeast	20.28	20.18	2.37	2.80	36.89	35.51
Appalachian	21.35	21.26	-----	-----	70.58	68.86
Florida	23.56	23.44	-----	-----	87.92	86.00
Southeast	21.81	21.57	-----	-----	72.29	68.05
Upper Midwest	18.25	17.78	0.34	0.40	10.57	10.05
<b>Central</b>	<b>18.92</b>	<b>18.62</b>	<b>1.01</b>	<b>1.24</b>	<b>33.16</b>	<b>30.05</b>
Mideast	19.32	19.12	1.41	1.74	39.09	38.10
Pacific Northwest	18.93	18.65	1.02	1.27	27.88	22.94
Southwest	19.74	19.40	1.83	2.02	36.73	33.29
Arizona	19.41	19.17	-----	-----	32.17	29.60

The U.S. Department of Agriculture (USDA) prohibits discrimination in all its programs and activities on the basis of race, color, national origin, age, disability, and where applicable, sex (including gender identity and expression), marital status, familial status, parental status, religion, sexual orientation, political beliefs, genetic information, reprisal, or because all or part of an individual's income is derived from any public assistance program. (Not all prohibited bases apply to all programs.) Persons with disabilities who require alternative means for communication of program information (Braille, large print, audiotape, etc.) should contact USDA's TARGET Center at (202) 720-2600 (voice and TDD).

To file a complaint of discrimination, write to USDA, Assistant Secretary for Civil Rights, Office of the Assistant Secretary for Civil Rights, 1400 Independence Avenue, S.W., Stop 9410, Washington, D.C. 20250-9410. Or call toll-free at (866) 632-9992 (English) or (800) 877-8339 (TDD) or (866) 377-8642 (English Federal-relay) or (800) 845-6136 (Spanish Federal-relay). USDA is an equal opportunity provider and employer.