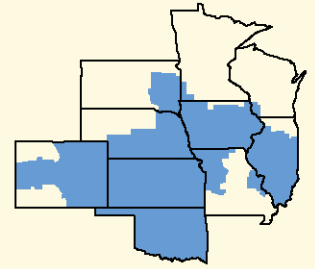


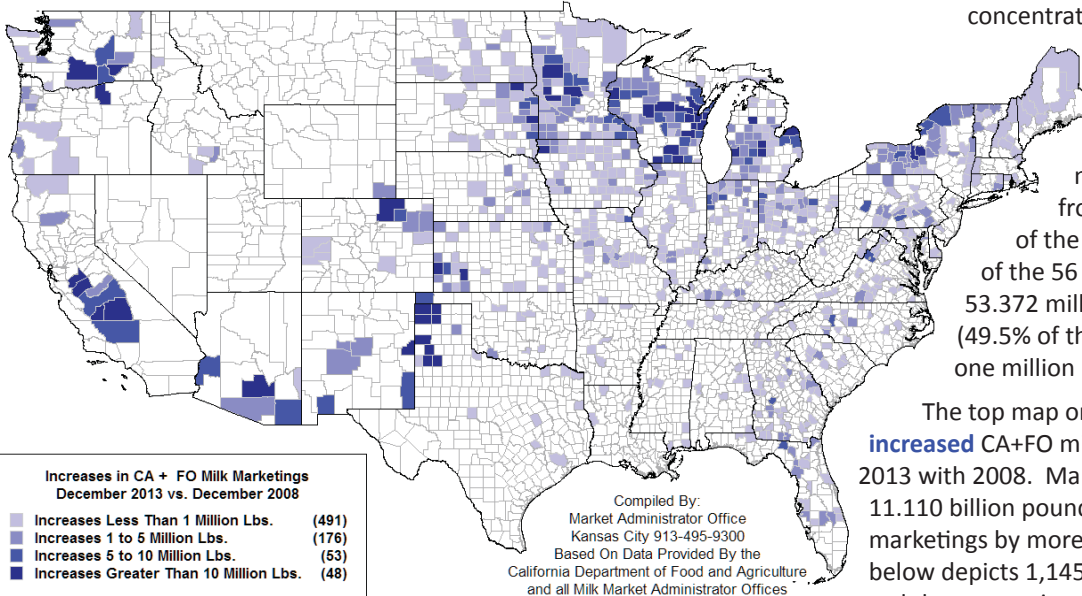
Bulletin

Facilitating the efficient marketing of milk and dairy products.



CENTRAL MARKETING AREA

768 Counties Increased Marketings



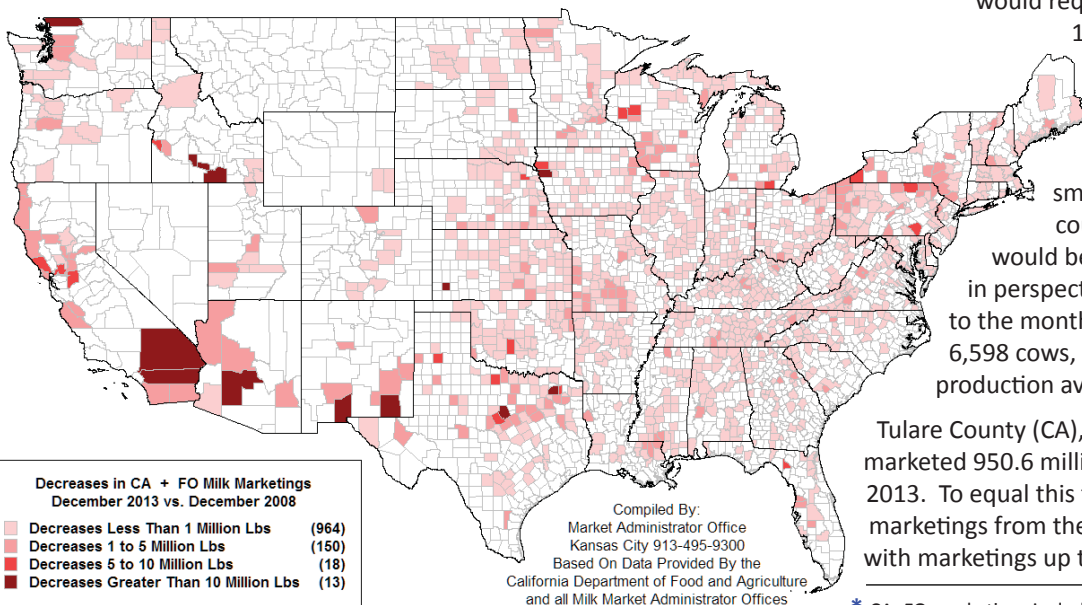
The origin of milk marketings remains highly concentrated, with 56 counties accounting for 50% of the December 2013 California & Federal order (CA+FO) total.* These 56 counties represent only 3.3% of the 1,716 counties with CA+FO milk marketings, and this number is **down** from 57 counties that comprised 50% of the total in December 2008. While each of the 56 largest counties marketed more than 53.372 million pounds, there were 849 counties (49.5% of the CA+FO total) that marketed less than one million pounds each in December 2013.

The top map on this page depicts 768 counties with **increased** CA+FO milk marketings, comparing December 2013 with 2008. Marketings from these counties totaled 11.110 billion pounds, with 48 counties increasing marketings by more than 10 million pounds. The map below depicts 1,145 counties with **decreased** marketings, and these counties marketed 3.623 billion pounds in

December 2013. Milk from all 1,716 counties with CA+FO order marketings totaled 14.733 billion pounds, an **increase** of 1.065 billion pounds (+7.8%) compared with December 2008.

California milk marketings included in this analysis totaled 3.402 billion pounds, or 23.1% of the CA+FO December 2013 total. The magnitude of milk from seven California counties with the most marketings -- over 196 million pounds each -- dwarfs a majority of all other counties combined. Ranking all the counties with CA+FO milk marketings in ascending order would require marketings from the smallest

1,145 Counties Decreased Marketings

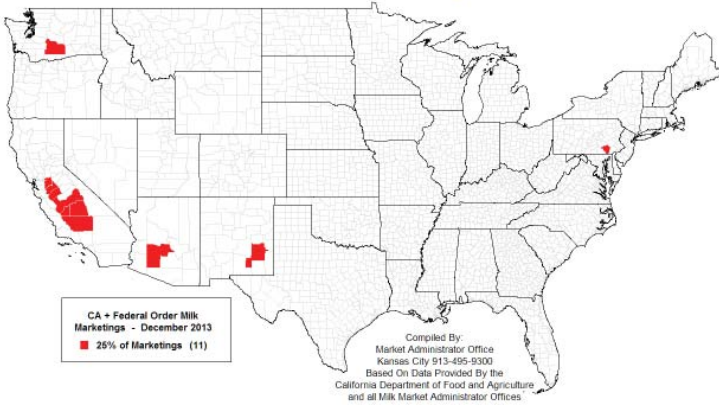


1,482 counties (86.4% of the 1,716 total) to equal the amount from the seven largest California counties (2.927 billion pounds). Not all of these 1,482 counties would be considered small in terms of milk marketings, since counties with up to 12.321 million pounds would be included in this grouping. To put this in perspective, 12 million pounds of milk is equal to the monthly production from approximately 6,598 cows, assuming the U.S. 2013 annual production average of 21,822 pounds of milk per cow.

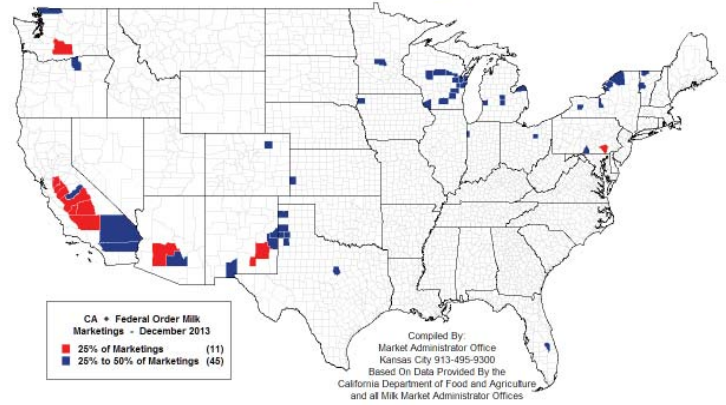
Tulare County (CA), the largest dairy county in the U.S., marketed 950.6 million pounds of milk in December 2013. To equal this total would require the combined milk marketings from the smallest 1,197 counties, or all counties with marketings up to 3.651 million pounds.

* CA+FO marketings included in this analysis represent approximately 88% of the total pounds of milk produced in the U.S. in December 2013.

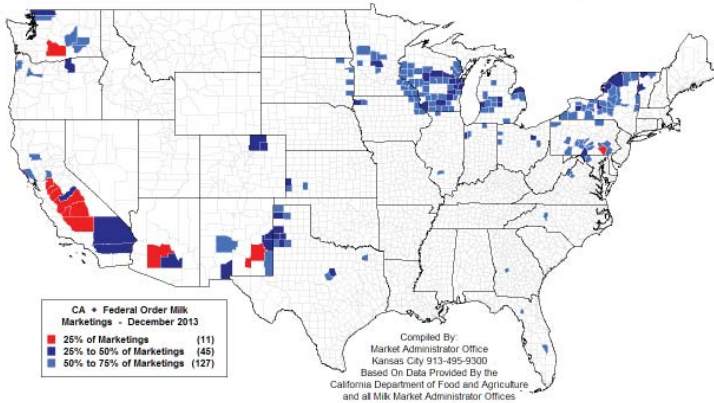
**11 Counties Marketed 25% of All
CA + Federal Order Milk During December 2013**



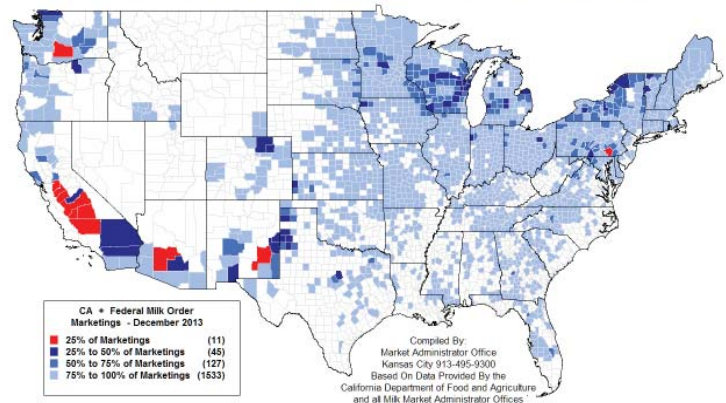
**56 Counties Marketed 50% Of All
CA + Federal Order Milk During December 2013**



**183 Counties Marketed 75% Of All
CA + Federal Order Milk During December 2013**



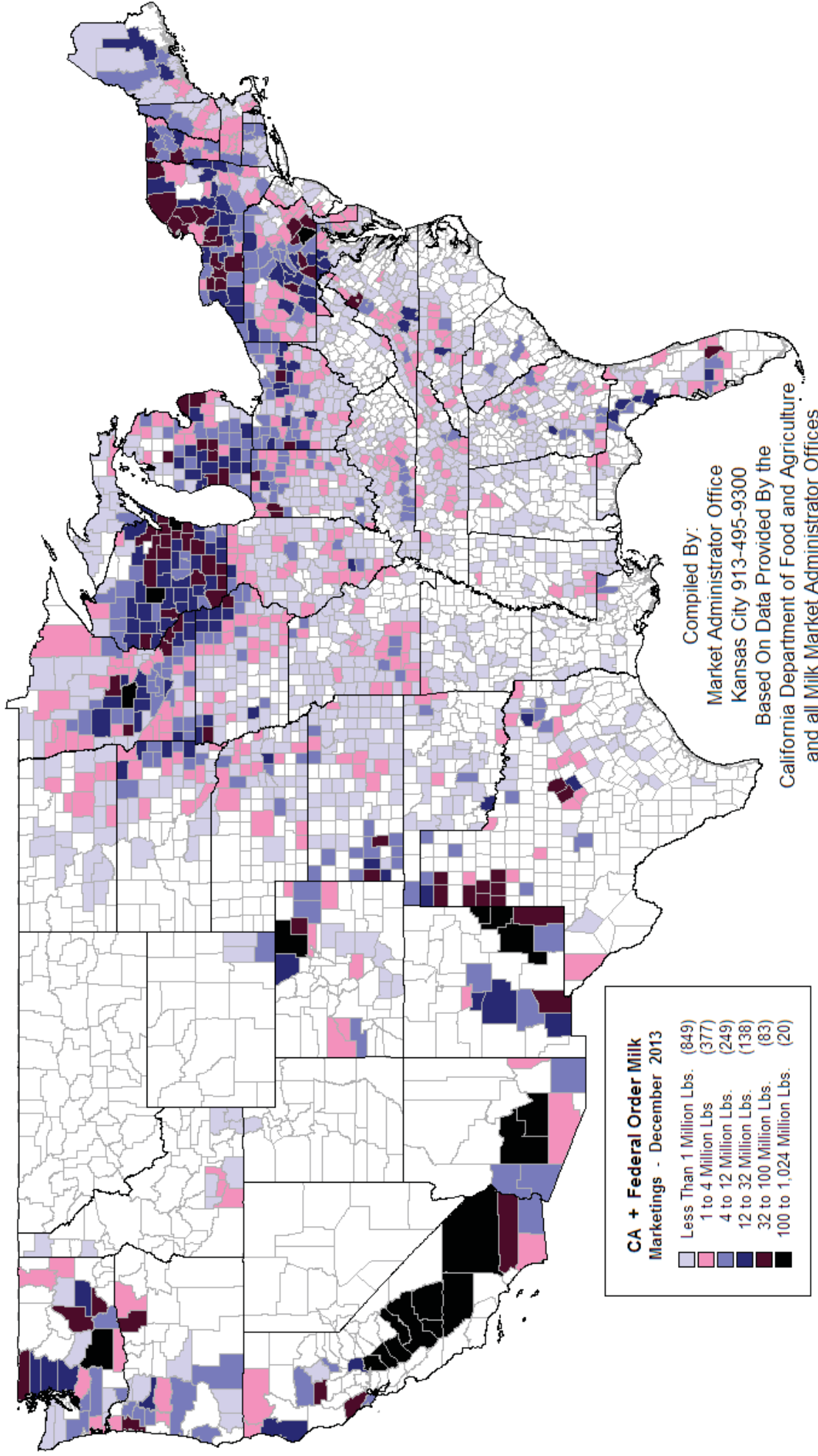
**1,716 Counties Marketed 100% Of All
CA + Federal Order Milk During December 2013**



**Eleven Counties Marketed 25% Of The CA + Federal Order Milk
During December 2013**

	<u>Dec '13 Mktgs</u>	<u>Dec '08 Mktgs</u>	<u>Percent Change</u>	<u>Dec 2013 As % Of 12/13 Total</u>
Tulare, CA	950,611,168	896,684,807	+6.01	6.45
Merced, CA	489,348,565	465,986,992	+5.01	3.32
Kings, CA	358,459,484	337,967,460	+6.06	2.43
Stanislaus, CA	358,194,506	327,655,516	+9.32	2.43
Kern, CA	343,144,777	335,645,457	+2.23	2.33
Fresno, CA	231,354,229	226,186,616	+2.28	1.57
Yakima, WA	214,647,373	181,375,251	+18.34	1.46
San Joaquin, CA	196,070,194	204,787,390	-4.26	1.33
Maricopa, AZ	195,947,837	276,158,165	-29.05	1.33
Lancaster, PA	188,546,792	195,792,639	-3.70	1.28
Chaves, NM	164,158,207	167,036,174	-1.72	1.11
11-County Total	3,690,483,132	3,615,276,467	+2.08	25.05
CA + FO Total	14,733,051,654	13,668,396,982	+7.79	

CA + Federal Order Milk Marketings By County December 2013



CA + Federal Order Milk Marketings - December 2013	
Less Than 1 Million Lbs.	(849)
1 to 4 Million Lbs.	(377)
4 to 12 Million Lbs.	(249)
12 to 32 Million Lbs.	(138)
32 to 100 Million Lbs.	(83)
100 to 1,024 Million Lbs.	(20)



**United States
Department of
Agriculture**

FIRST CLASS
U.S. POSTAGE
PAID
SHAWNEE MISSION, KS
PERMIT NO. 377

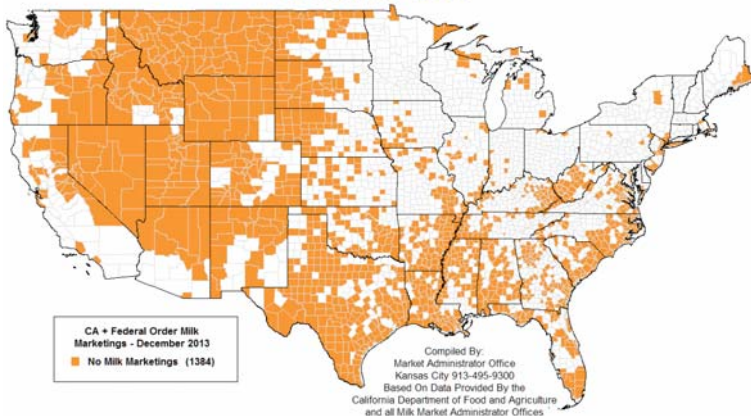
FEDERAL MILK MARKET ADMINISTRATOR
P.O. BOX 14650
SHAWNEE MISSION, KANSAS 66285-4650

FIRST CLASS

Website: www.fmmacentral.com
E-mail: market.administrator@fmmacentral.com
Phone: 913-495-9300

	Statistical Uniform Price		Producer Price Differential		Class I Utilization	
	Apr '14	Mar '14	Apr '14	Mar '14	Apr '14	Mar '14
Northeast	25.46	24.97	1.15	1.64	34.37	35.60
Appalachian	26.31	26.02	-----	-----	62.26	60.79
Florida	28.45	28.19	-----	-----	84.29	82.70
Southeast	26.73	26.56	-----	-----	65.90	66.61
Upper Midwest	24.41	23.52	0.10	0.19	11.34	10.81
Central	24.20	23.68	-0.11	0.35	32.79	29.66
Mideast	24.48	23.95	0.17	0.62	36.03	36.52
Pacific Northwest	24.03	23.68	-0.28	0.35	29.10	22.58
Southwest	25.12	24.52	0.81	1.19	45.80	28.41
Arizona	24.43	24.22	-----	-----	25.55	24.48

**Counties With No CA + Federal Order Milk Marketings
December 2013**



The U.S. Department of Agriculture (USDA) prohibits discrimination in all its programs and activities on the basis of race, color, national origin, age, disability, and where applicable, sex (including gender identity and expression), marital status, familial status, parental status, religion, sexual orientation, political beliefs, genetic information, reprisal, or because all or part of an individual's income is derived from any public assistance program. (Not all prohibited bases apply to all programs.) Persons with disabilities who require alternative means for communication of program information (Braille, large print, audiotape, etc.) should contact USDA's TARGET Center at (202) 720-2600 (voice and TDD).

To file a complaint of discrimination, write to USDA, Assistant Secretary for Civil Rights, Office of the Assistant Secretary for Civil Rights, 1400 Independence Avenue, S.W., Stop 9410, Washington, D.C. 20250-9410. Or call toll-free at (866) 632-9992 (English) or (800) 877-8339 (TDD) or (866) 377-8642 (English Federal-relay) or (800) 845-6136 (Spanish Federal-relay). USDA is an equal opportunity provider and employer.