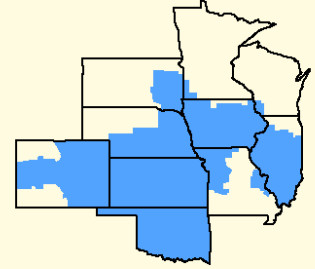


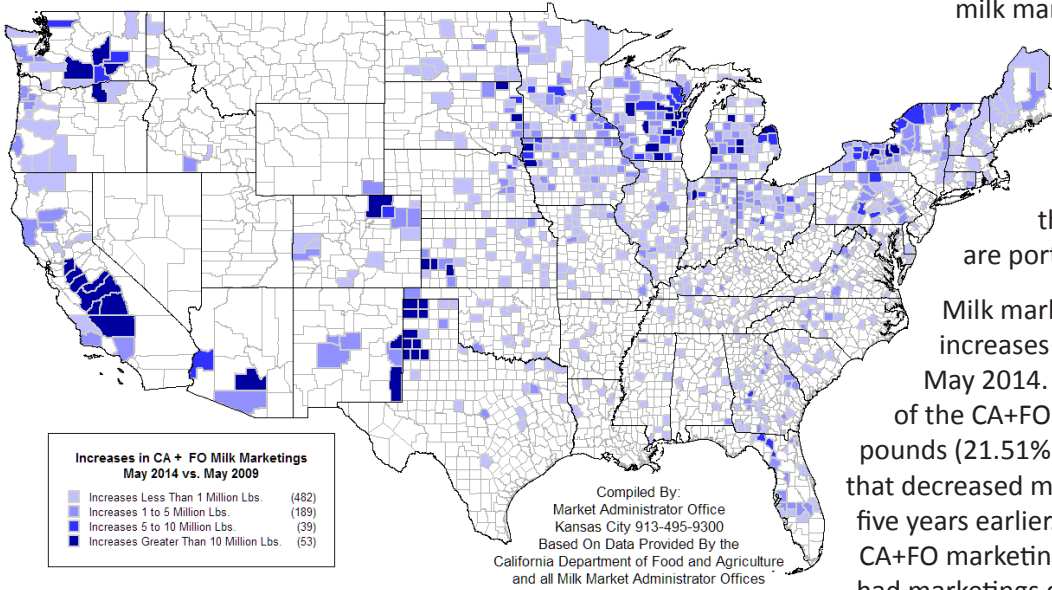
Bulletin

Facilitating the efficient marketing of milk and dairy products.



CENTRAL MARKETING AREA

763 Counties Increased Marketings

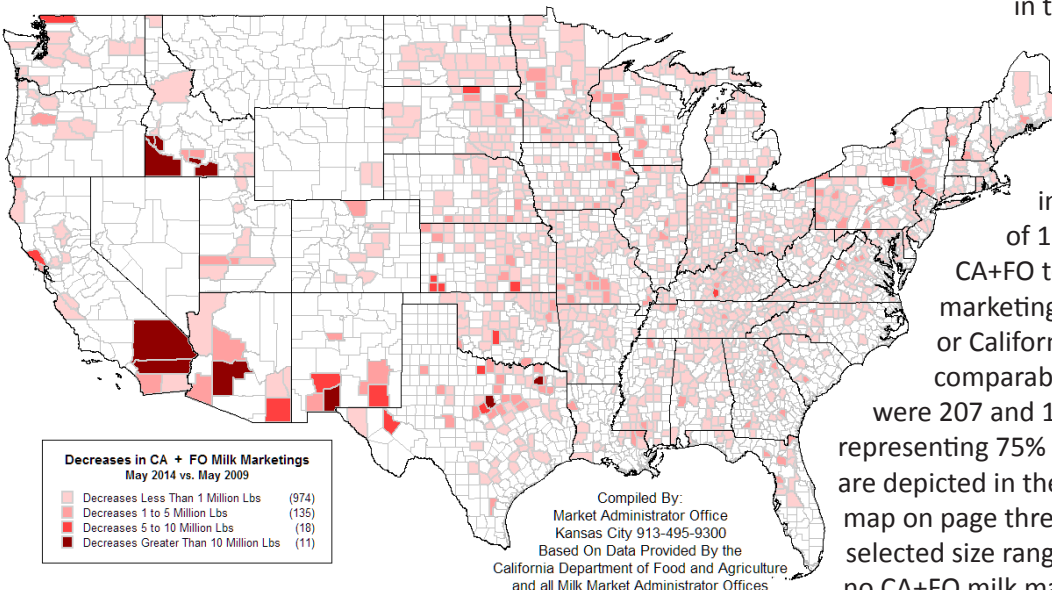


This Bulletin details California & Federal order milk marketings by county for May 2014 and includes comparisons with May 2009. The top map on this page depicts counties with CA+FO marketing increases compared with five years earlier, while counties that reported decreased marketings are portrayed in the lower map.

Milk marketings from 763 counties with increases totaled 12.687 billion pounds during May 2014. These marketings represent 78.49% of the CA+FO total. This compares to 3.477 billion pounds (21.51% of the total) from 1,138 counties that decreased marketings, comparing May 2014 with five years earlier. There were 1,414 counties with no CA+FO marketings in May 2014; 205 of these counties had marketings during May 2009.

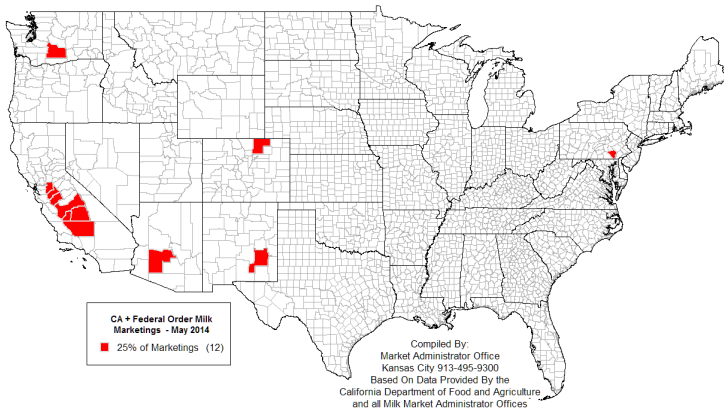
Milk from twelve counties accounted for 25% of all CA+FO marketings during May 2014, which is the same number of counties that marketed 25% during May 2009. Seven of the top twelve counties are located in California, with Tulare (CA) county's 1.026 billion pounds leading the way. Marketings from this county represent 6.35% of the CA+FO May 2014 total. To put this in perspective, it requires the combined marketings of 1,169 counties with the lowest marketings to surpass the Tulare county total. The twelve counties that represent 25% of the CA+FO total for May 2014 are depicted in the top left map on page two.

1,138 Counties Decreased Marketings

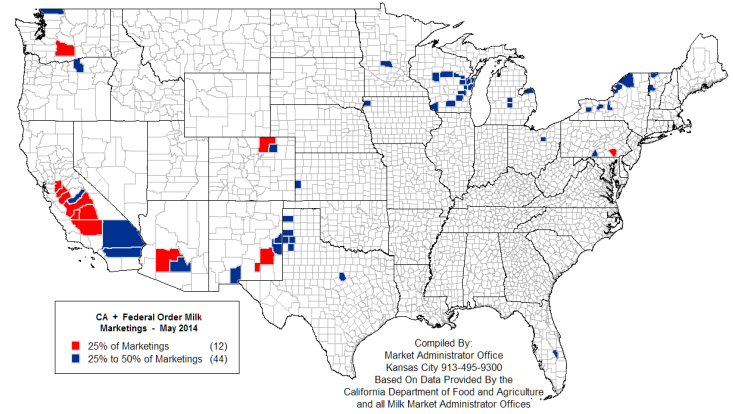


As indicated by the top right map on page two, 56 counties marketed 50% of the May 2014 CA+FO total, up from 62 counties in May 2009. In May 2014 a total of 183 counties marketed 75% of the CA+FO total, while 1,686 counties had milk marketings under either the Federal order or California state order programs. The comparable number of counties for May 2009 were 207 and 1,852, respectively. The counties representing 75% and 100% of CA+FO milk marketings are depicted in the lower two maps on page two. The map on page three details CA+FO milk marketings by selected size ranges for May 2014, while counties with no CA+FO milk marketings are depicted in the map on the last page of this bulletin.

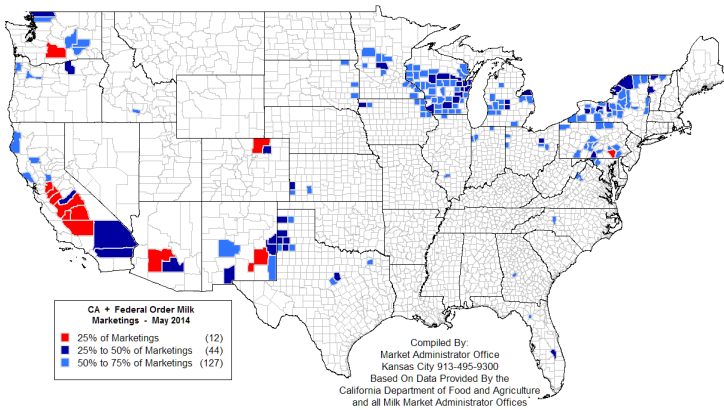
**12 Counties Marketed 25% of All
CA + Federal Order Milk During May 2014**



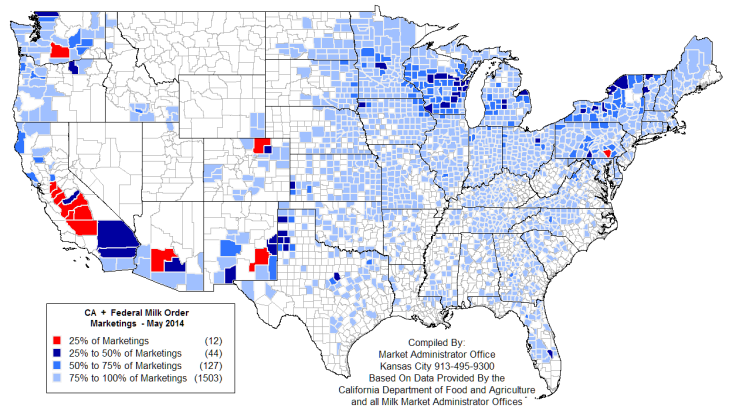
**56 Counties Marketed 50% Of All
CA + Federal Order Milk During May 2014**



**183 Counties Marketed 75% Of All
CA + Federal Order Milk During May 2014**



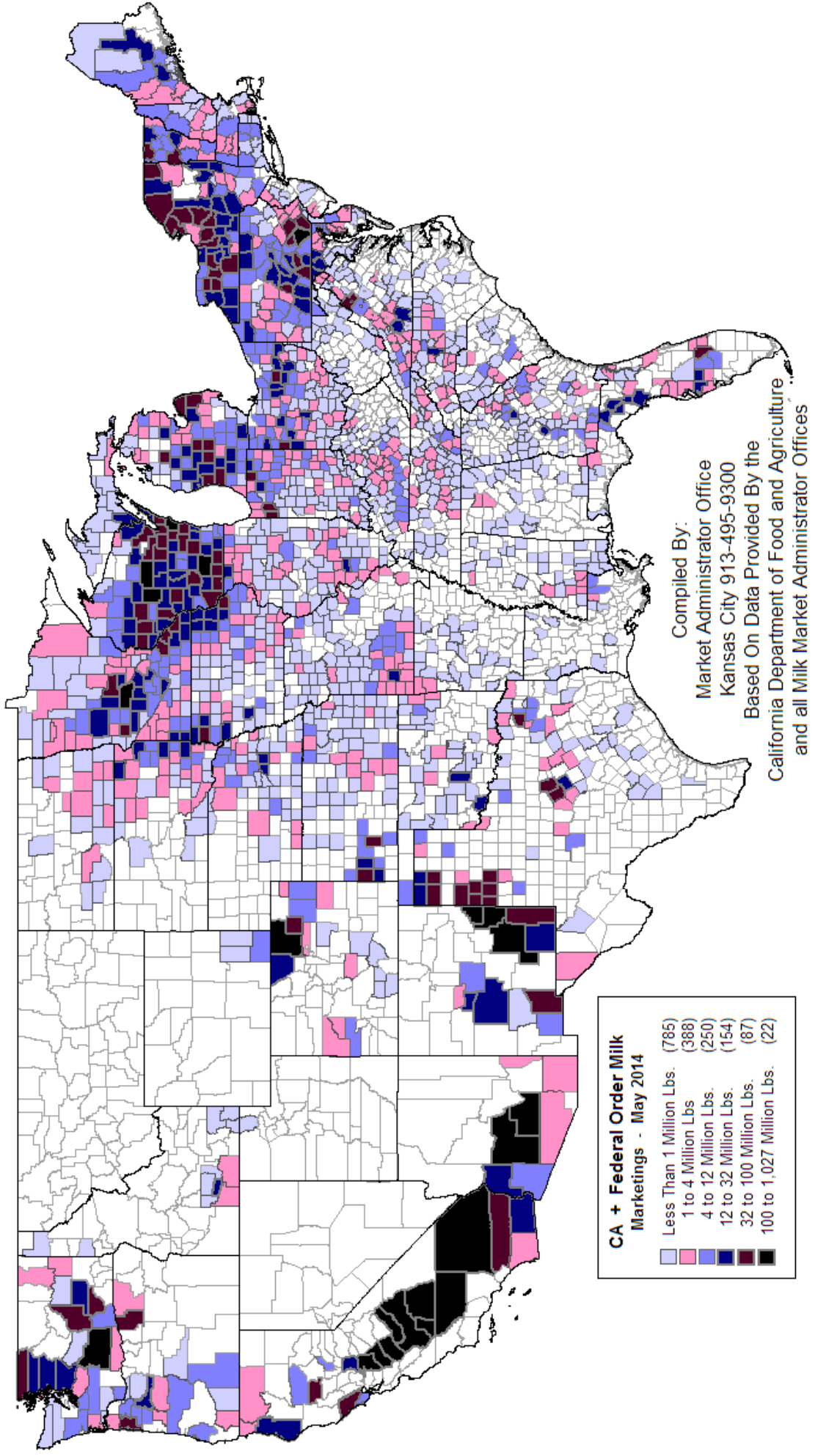
**1,686 Counties Marketed 100% Of All
CA + Federal Order Milk During May 2014**



**Twelve Counties Marketed 25% Of The CA + Federal Order Milk
During May 2014**

	<u>May '14 Mktgs</u>	<u>May '09 Mktgs</u>	<u>Percent Change</u>	<u>May 2014 As % Of 05/14 Total</u>
Tulare, CA	1,026,418,891	957,197,500	+7.23	6.35
Merced, CA	561,306,136	436,706,229	+28.53	3.47
Kings, CA	391,760,841	350,208,056	+11.87	2.42
Stanislaus, CA	370,719,151	299,672,813	+23.71	2.29
Kern, CA	368,962,709	320,427,269	+15.15	2.28
Fresno, CA	250,216,140	228,859,554	+9.33	1.55
Yakima, WA	240,066,256	192,187,274	+24.91	1.49
Maricopa, AZ	225,197,593	289,880,015	-22.31	1.39
San Joaquin, CA	216,418,398	184,779,888	+17.12	1.34
Lancaster, PA	205,151,265	205,654,504	-0.24	1.27
Weld, CO	182,561,668	127,113,418	+43.62	1.13
Chaves, NM	173,415,527	177,801,391	-2.47	1.07
12-County Total	4,212,194,575	3,770,487,911	+11.71	26.06
CA + FO Total	16,163,343,475	14,684,628,667	+10.07	

CA + Federal Order Milk Marketings By County May 2014



CA + Federal Order Milk Marketings - May 2014

Less Than 1 Million Lbs.	(785)
1 to 4 Million Lbs.	(388)
4 to 12 Million Lbs.	(250)
12 to 32 Million Lbs.	(154)
32 to 100 Million Lbs.	(87)
100 to 1,027 Million Lbs.	(22)

Compiled By:
Market Administrator Office
Kansas City 913-495-9300
Based On Data Provided By the
California Department of Food and Agriculture
and all Milk Market Administrator Offices



**United States
Department of
Agriculture**

FIRST CLASS
U.S. POSTAGE
PAID
SHAWNEE MISSION, KS
PERMIT NO. 377

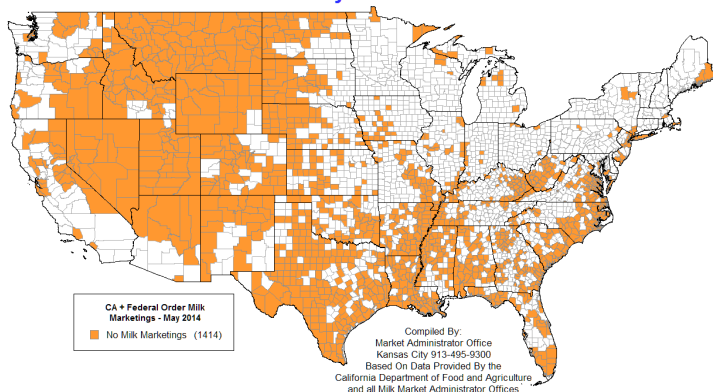
FEDERAL MILK MARKET ADMINISTRATOR
P.O. BOX 14650
SHAWNEE MISSION, KANSAS 66285-4650

FIRST CLASS

Website: www.fmmacentral.com
E-mail: market.administrator@fmmacentral.com
Phone: 913-495-9300

	Statistical Uniform Price		Producer Price Differential		Class I Utilization	
	Oct '14	Sep '14	Oct '14	Sep '14	Oct '14	Sep '14
Northeast	24.35	26.16	0.53	1.56	37.85	36.69
Appalachian	25.97	27.23	----	----	73.50	73.19
Florida	28.10	29.29	----	----	85.47	86.85
Southeast	26.73	27.86	----	----	81.02	82.12
Upper Midwest	23.71	24.76	-0.11	0.16	13.74	10.81
Central	23.46	24.83	-0.36	0.23	38.49	32.79
Midwest	23.31	25.07	-0.51	0.47	38.69	35.85
Pacific Northwest	22.83	24.30	-0.99	-0.30	35.79	23.88
Southwest	24.50	25.80	0.68	1.20	53.10	32.60
Arizona	23.45	24.91	----	----	30.87	31.64

Counties With No CA + Federal Order Milk Marketings
May 2014



The U.S. Department of Agriculture (USDA) prohibits discrimination in all its programs and activities on the basis of race, color, national origin, age, disability, and where applicable, sex (including gender identity and expression), marital status, familial status, parental status, religion, sexual orientation, political beliefs, genetic information, reprisal, or because all or part of an individual's income is derived from any public assistance program. (Not all prohibited bases apply to all programs.) Persons with disabilities who require alternative means for communication of program information (Braille, large print, audiotape, etc.) should contact USDA's TARGET Center at (202) 720-2600 (voice and TDD).

To file a complaint of discrimination, write to USDA, Assistant Secretary for Civil Rights, Office of the Assistant Secretary for Civil Rights, 1400 Independence Avenue, S.W., Stop 9410, Washington, D.C. 20250-9410. Or call toll-free at (866) 632-9992 (English) or (800) 877-8339 (TDD) or (866) 377-8642 (English Federal-relay) or (800) 845-6136 (Spanish Federal-relay). USDA is an equal opportunity provider and employer.