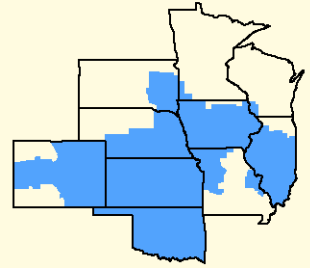


# Bulletin

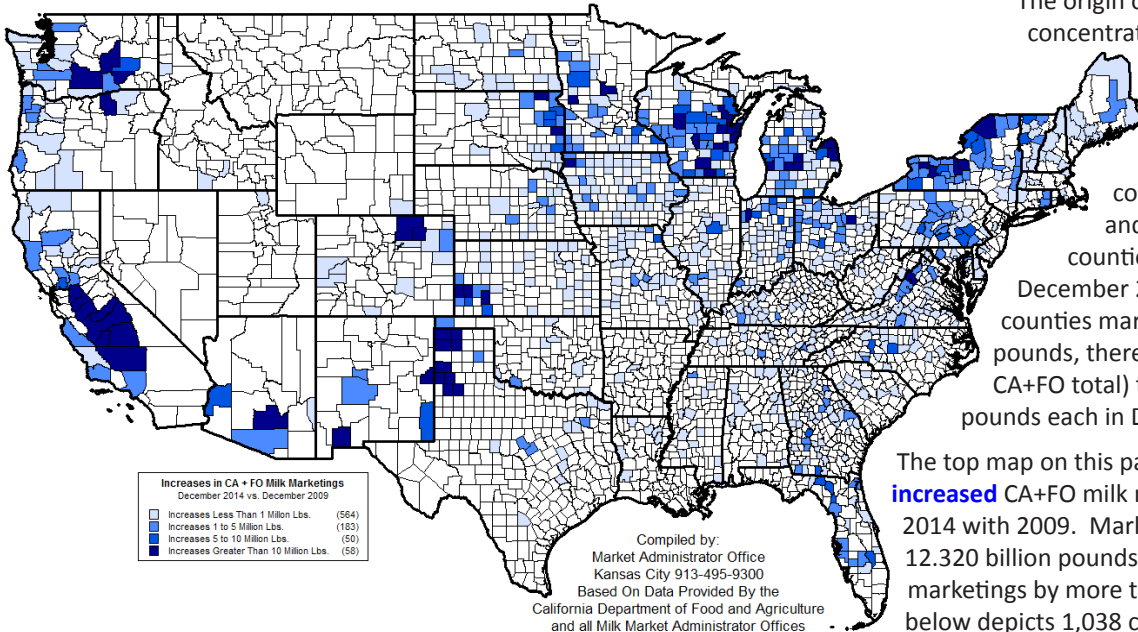


*Facilitating the efficient marketing of milk and dairy products.*



**CENTRAL MARKETING AREA**

**855 Counties Increased Marketings**



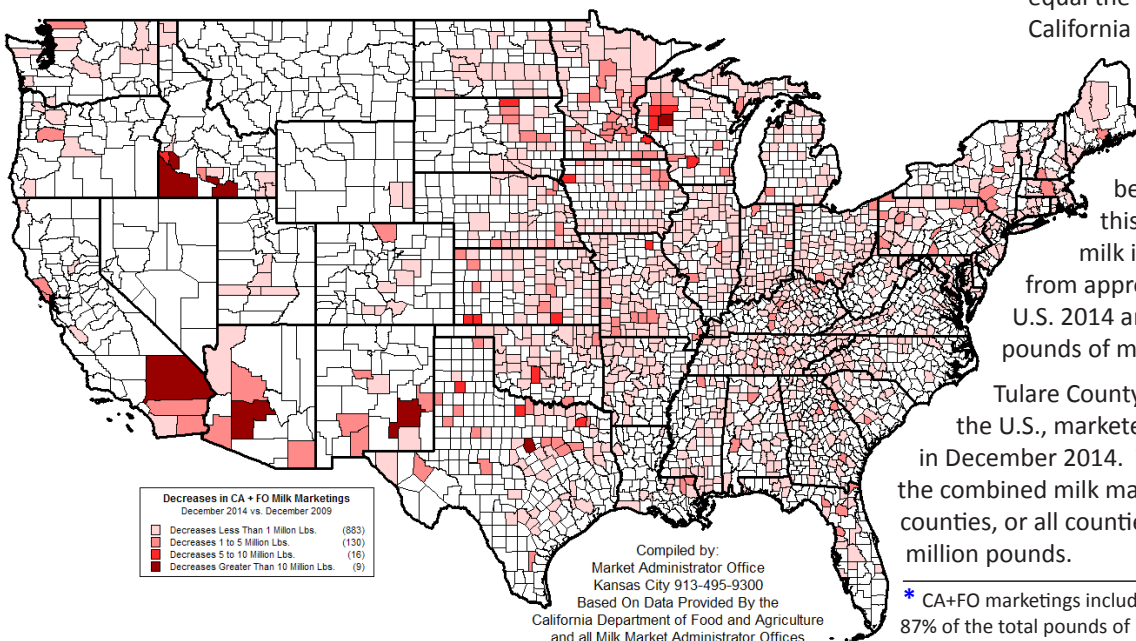
The origin of milk marketings remains highly concentrated, with 56 counties accounting for 50% of the December 2014 California & Federal order (CA+FO) total.\* These 56 counties represent only 3.3% of the 1,691 counties with CA+FO milk marketings, and this number is **down** from 59 counties that comprised 50% of the total in December 2009. While each of the 56 largest counties marketed more than 56.859 million pounds, there were 828 counties (49.0% of the CA+FO total) that marketed less than one million pounds each in December 2014.

The top map on this page depicts 855 counties with **increased** CA+FO milk marketings, comparing December 2014 with 2009. Marketings from these counties totaled 12.320 billion pounds, with 58 counties increasing marketings by more than 10 million pounds. The map below depicts 1,038 counties with **decreased** marketings,

and these counties marketed 2.842 billion pounds in December 2014. Milk from all 1,691 counties with CA+FO order marketings totaled 15.162 billion pounds, an **increase** of 1.600 billion pounds (+11.8%) compared with December 2009.

California milk marketings included in this analysis totaled 3.457 billion pounds, or 22.8% of the CA+FO December 2014 total. The magnitude of milk from seven California counties with the most marketings -- over 200 million pounds each -- dwarfs a majority of all other counties combined. Ranking all the counties with CA+FO milk marketings in ascending order would require marketings from the smallest

**1,038 Counties Decreased Marketings**

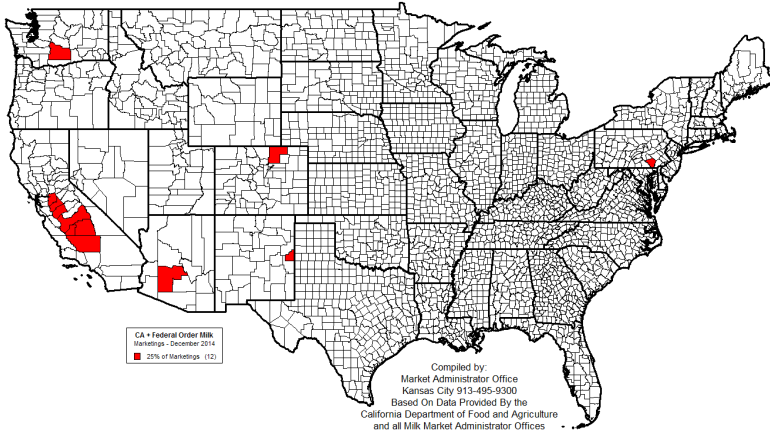


1,465 counties (86.6% of the 1,691 total) to equal the amount from the seven largest California counties (2.956 billion pounds). Not all of these 1,465 counties would be considered small in terms of milk marketings, since counties with up to 13.163 million pounds would be included in this grouping. To put this in perspective, 13 million pounds of milk is equal to the monthly production from approximately 7,009 cows, assuming the U.S. 2014 annual production average of 22,258 pounds of milk per cow.

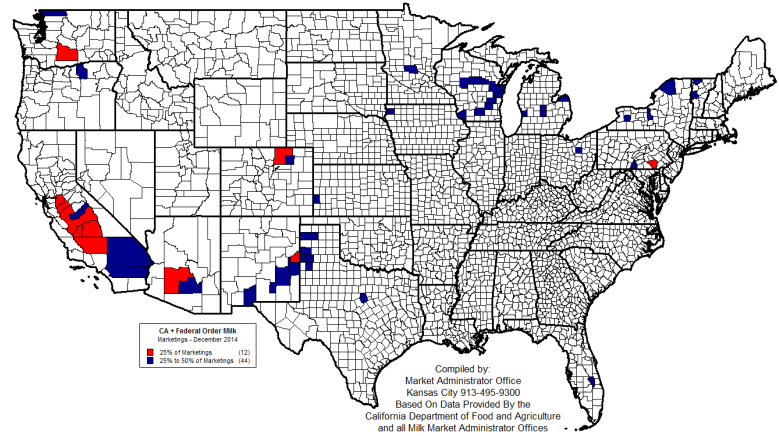
Tulare County (CA), the largest dairy county in the U.S., marketed 948.0 million pounds of milk in December 2014. To equal this total would require the combined milk marketings from the smallest 1,177 counties, or all counties with marketings up to 3.557 million pounds.

\* CA+FO marketings included in this analysis represent approximately 87% of the total pounds of milk produced in the U.S. in December 2014.

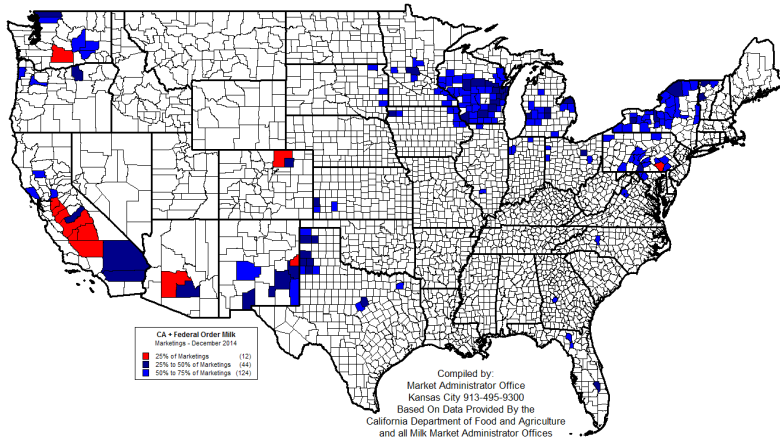
**12 Counties Marketed 25% Of All  
CA + Federal Order Milk During December 2014**



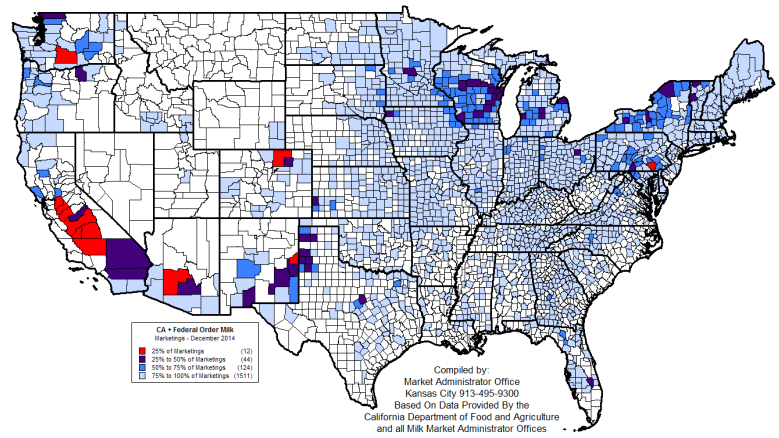
**56 Counties Marketed 50% Of All  
CA + Federal Order Milk During December 2014**



**180 Counties Marketed 75% Of All  
CA + Federal Order Milk During December 2014**



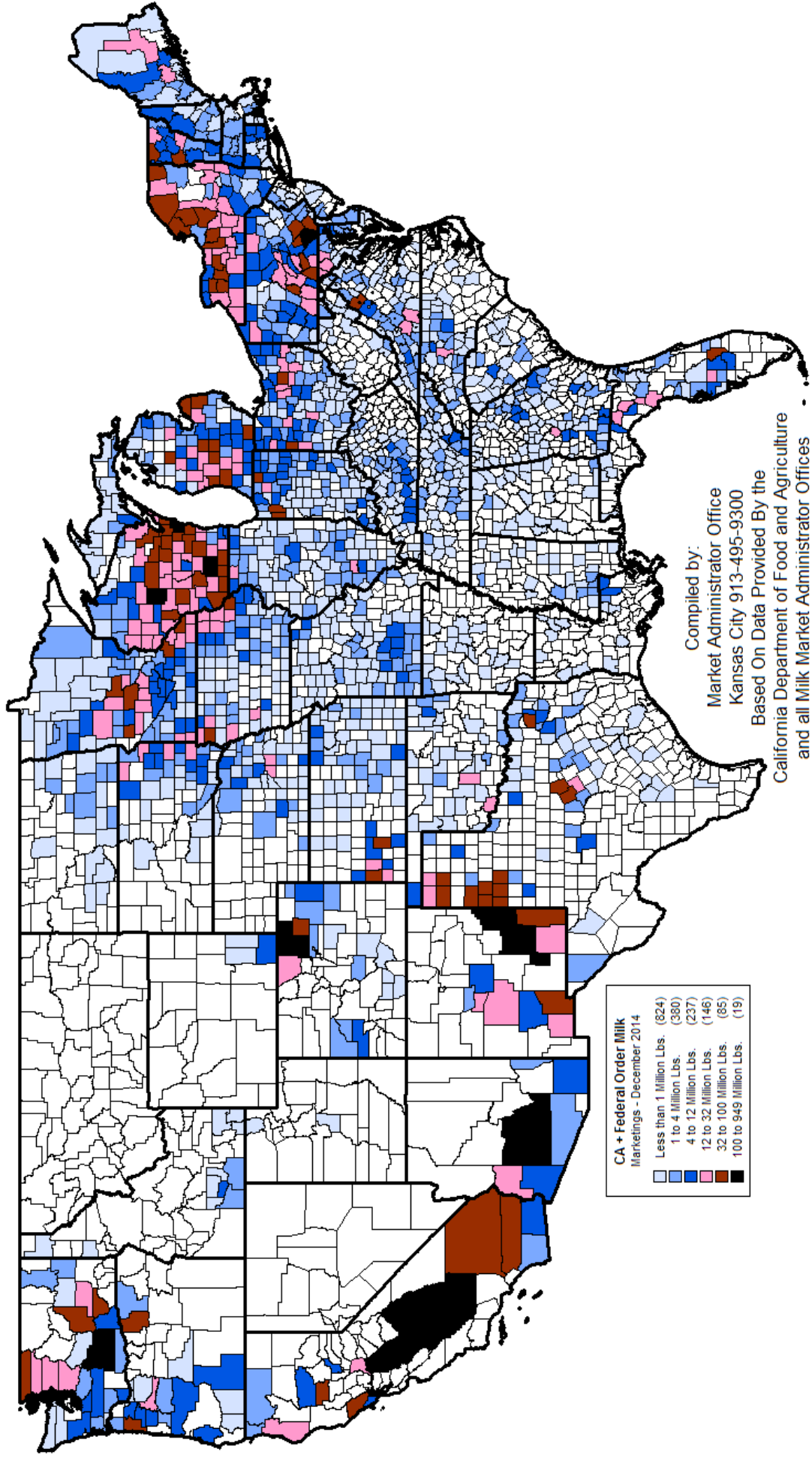
**1,691 Counties Marketed 100% Of All  
CA + Federal Order Milk During December 2014**



**Twelve Counties Marketed 25% Of The CA + Federal Order Milk  
During December 2014**

	<u>Dec '14 Mktgs</u>	<u>Dec '09 Mktgs</u>	<u>Percent Change</u>	<u>Dec 2014 As % Of 12/14 Total</u>
Tulare, CA	948,004,461	899,860,916	+5.35	6.25
Merced, CA	516,199,958	408,062,349	+26.50	3.40
Kings, CA	364,013,494	329,518,529	+10.47	2.40
Stanislaus, CA	358,574,547	282,197,903	+27.06	2.37
Kern, CA	332,828,556	308,437,529	+7.91	2.20
Fresno, CA	235,260,549	210,401,524	+11.82	1.55
Yakima, WA	222,111,119	193,156,202	+14.99	1.46
Maricopa, AZ	212,898,290	268,339,162	-20.66	1.40
San Joaquin, CA	200,841,452	177,960,170	+12.86	1.32
Lancaster, PA	198,755,166	189,357,346	+4.96	1.31
Weld, CO	182,174,945	99,260,828	+83.53	1.20
Curry, NM	164,283,027	125,339,933	+31.07	1.08
<b>12-County Total</b>	<b>3,935,945,564</b>	<b>3,491,892,391</b>	<b>+12.72</b>	<b>25.96</b>
<b>CA + FO Total</b>	<b>15,161,568,119</b>	<b>13,561,746,556</b>	<b>+11.80</b>	

# CA + Federal Order Milk Marketings By County December 2014





**United States  
Department of  
Agriculture**

FIRST CLASS  
U.S. POSTAGE  
PAID  
OLATHE, KS  
PERMIT NO. 377

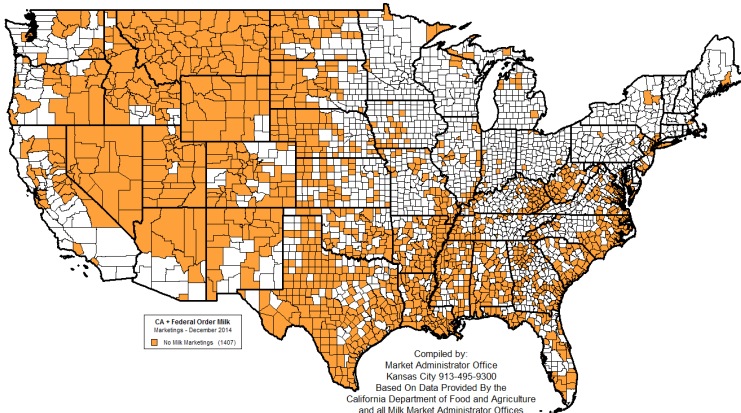
**FEDERAL MILK MARKET ADMINISTRATOR**  
P.O. BOX 14650  
SHAWNEE MISSION, KANSAS 66285-4650

**FIRST CLASS**

Website: [www.fmmacentral.com](http://www.fmmacentral.com)  
E-mail: [market.administrator@fmmacentral.com](mailto:market.administrator@fmmacentral.com)  
Phone: 913-495-9300

	Statistical Uniform Price		Producer Price Differential		Class I Utilization	
	June '15	May '15	June '15	May '15	June '15	May '15
Northeast	17.09	16.82	0.37	0.63	34.06	32.50
Appalachian	18.24	17.83	-----	-----	66.33	60.92
Florida	20.62	20.36	-----	-----	83.95	83.01
Southeast	18.94	18.59	-----	-----	71.42	67.68
Upper Midwest	16.62	16.20	-0.10	0.01	13.16	12.32
<b>Central</b>	<b>16.30</b>	<b>15.98</b>	<b>-0.42</b>	<b>-0.21</b>	<b>34.78</b>	<b>34.46</b>
Mideast	16.26	15.98	-0.46	-0.21	33.79	33.73
Pacific Northwest	15.38	15.56	-1.34	-0.63	34.59	27.18
Southwest	17.21	16.74	0.49	0.55	57.05	51.44
Arizona	15.95	15.67	-----	-----	26.44	24.76

**Counties With No CA + Federal Order Milk Marketings  
December 2014**



The U.S. Department of Agriculture (USDA) prohibits discrimination in all its programs and activities on the basis of race, color, national origin, age, disability, and where applicable, sex (including gender identity and expression), marital status, familial status, parental status, religion, sexual orientation, political beliefs, genetic information, reprisal, or because all or part of an individual's income is derived from any public assistance program. (Not all prohibited bases apply to all programs.) Persons with disabilities who require alternative means for communication of program information (Braille, large print, audiotape, etc.) should contact USDA's TARGET Center at (202) 720-2600 (voice and TDD).

To file a complaint of discrimination, write to USDA, Assistant Secretary for Civil Rights, Office of the Assistant Secretary for Civil Rights, 1400 Independence Avenue, S.W., Stop 9410, Washington, D.C. 20250-9410. Or call toll-free at (866) 632-9992 (English) or (800) 877-8339 (TDD) or (866) 377-8642 (English Federal-relay) or (800) 845-6136 (Spanish Federal-relay). USDA is an equal opportunity provider and employer.