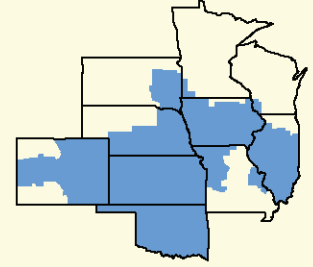


# Bulletin

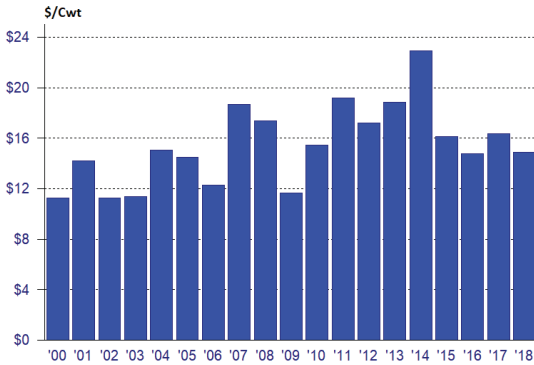


*Facilitating the efficient marketing of milk and dairy products.*



**CENTRAL MARKETING AREA**

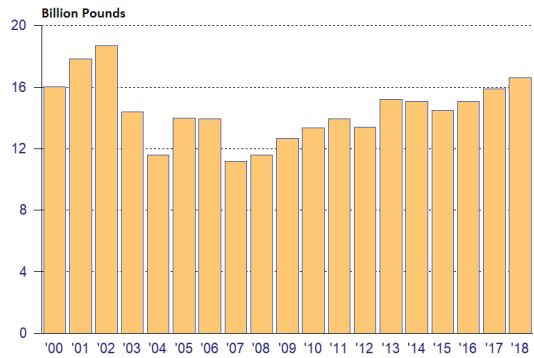
## Statistical Uniform Price



## Central Order Data: How Did 2018 Measure Up?

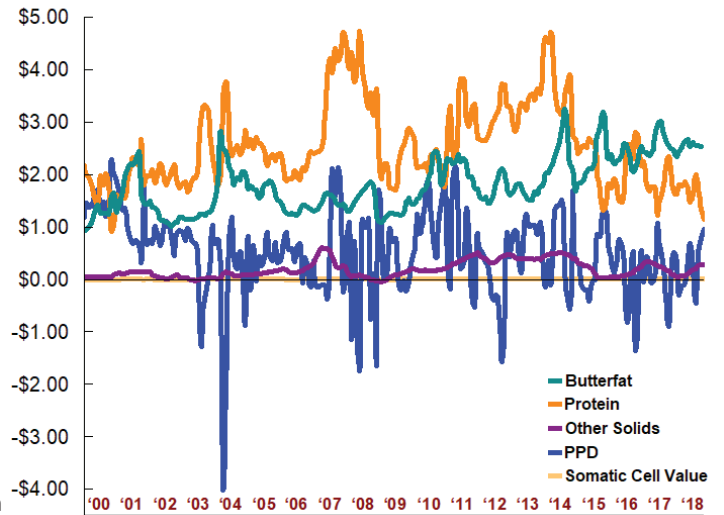
The weighted average statistical uniform price for the Central Order decreased for the third time in the last four years in 2018, registering \$14.87 per cwt., a 9.05% decrease from 2017's \$16.35 average. Since implementation of Federal Order reform in 2000, the annual statistical uniform price has averaged \$15.44, ranging from a low of \$11.24 in 2002 to the all time high of \$22.90 in 2014. The weighted average Producer Price Differential (PPD) for 2018 was \$0.29 per cwt., which is \$0.08 more than the 2017 average, but \$0.26 below the post-reform average of \$0.55 per cwt.

## Producer Milk



Producer marketings on the Central Order averaged 1.384 billion pounds per month during 2018, for a total of 16.604 billion pounds. This total is up 4.57% from 2017, but is 11.21% less than the record 18.700 billion pounds marketed during 2002. Central Order marketings were the 5th highest among all federal orders in 2018, trailing the Upper Midwest, Northeast, California, and Mideast Orders. The top right graph on page 3 depicts producer marketing data by order.

## Central Order Component Values



Monthly component prices for the last 19 years are depicted by graphs on page 2. Compared with the previous year, the 2018 average butterfat price decreased by 3.39%, the average protein price decreased by 11.70%, and the average other solids price decreased by 41.48%. Average Central Order producer component prices, along with PPD and statistical uniform prices are detailed in the table on this page.

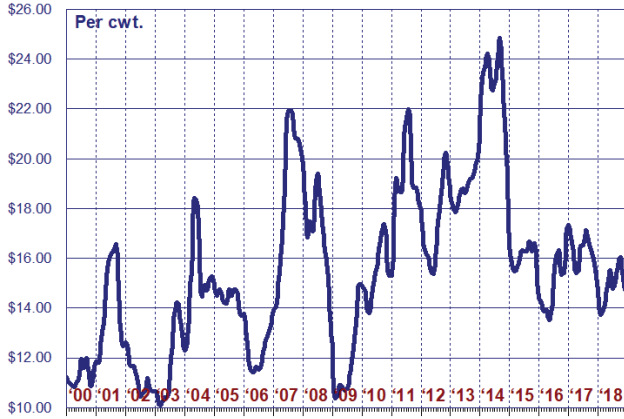
	<u>Butterfat</u>	<u>Protein</u>	<u>Other Solids</u>	<u>PPD</u>	<u>--Wtd Average-- Statistical Uniform</u>
2000	\$1.2522	\$1.6938	\$0.0509	\$1.54	\$11.28
2001	1.8480	1.9613	0.1343	1.05	14.21
2002	1.1928	1.9735	0.0593	0.84	11.24
2003	1.2099	2.3770	0.0129	0.51	11.40
2004	2.0507	2.6035	0.0751	0.09	15.06
2005	1.7105	2.4602	0.1228	0.47	14.47
2006	1.3252	2.0912	0.1746	0.46	12.26
2007	1.4693	3.5121	0.4201	0.63	18.67
2008	1.5668	3.8898	0.0555	0.02	17.39
2009	1.2571	2.2087	0.0612	0.45	11.68
2010	1.8535	2.3091	0.1777	1.05	15.48
2011	2.1535	2.9663	0.3434	0.82	19.19
2012	1.7230	3.0426	0.4063	0.10	17.21
2013	1.6634	3.3010	0.4029	0.83	18.82
2014	2.3792	3.7935	0.4684	0.61	22.90
2015	2.2954	2.2393	0.1867	0.37	16.13
2016	2.3084	2.0955	0.0910	0.14	14.79
2017	2.6143	1.8682	0.2519	0.21	16.35
<b>2018</b>	<b>2.5258</b>	<b>1.6497</b>	<b>0.1474</b>	<b>0.29</b>	<b>14.87</b>
%Change	-3.39	-11.70	-41.48	+38.10	-9.05

Class I utilization for the Central Order was 28.81% of producer receipts in 2018. The lowest annual utilization was recorded in 2002 at 26.02%, while Class I utilization peaked in 2007 at 38.82%. Central Order Class I utilization during 2018 ranked 7th among the 11 federal milk orders. Class I utilization percentages for all orders are depicted in the lower left graph on page 3.

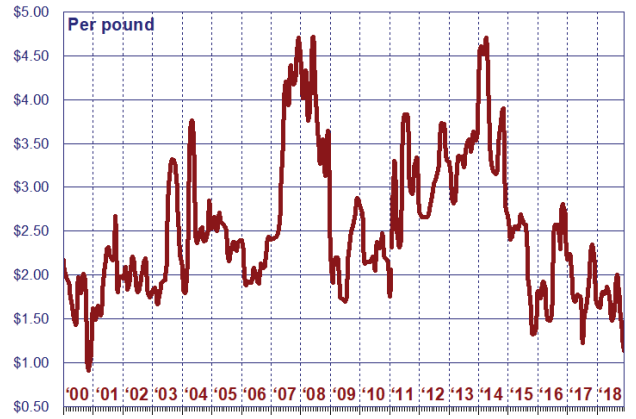
The graphics on page 2 depict 2000 through 2018 monthly prices and marketing data for the Central Order. Page 3 graphics illustrate the Central Order's relation to the other 9 orders regarding the statistical uniform price, producer receipts, and Class I and Class III utilization percentages for 2018. Central Order data is highlighted in each graphic.

# Central Order

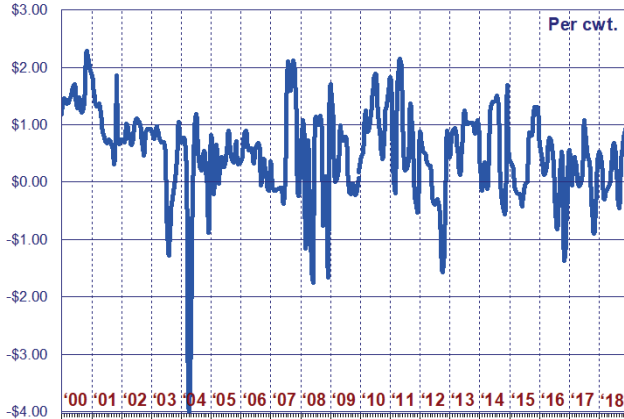
### Statistical Uniform Price



### Producer Protein Price



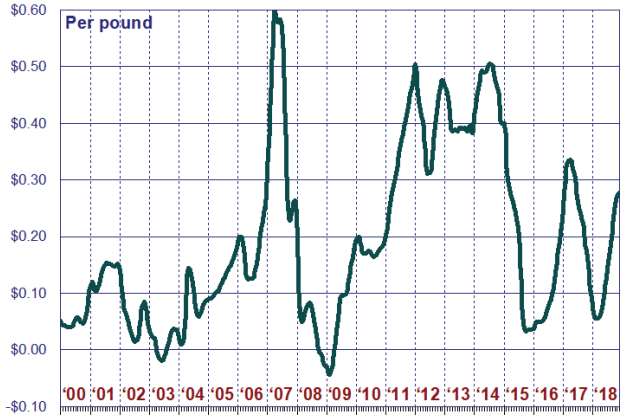
### Producer Price Differential



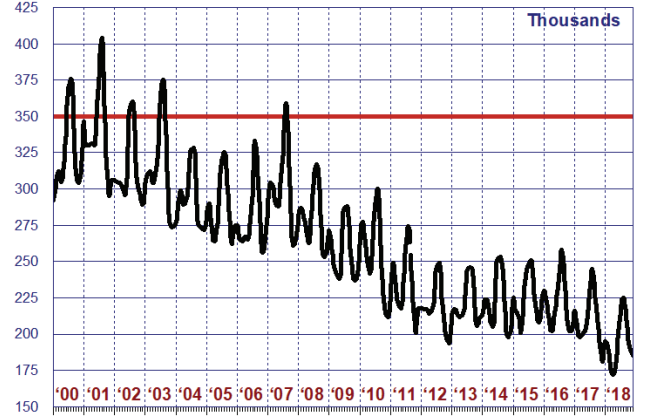
### Producer Butterfat Price



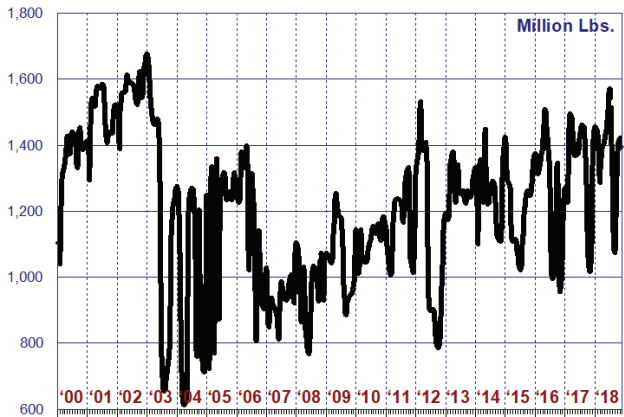
### Producer Other Solids Price



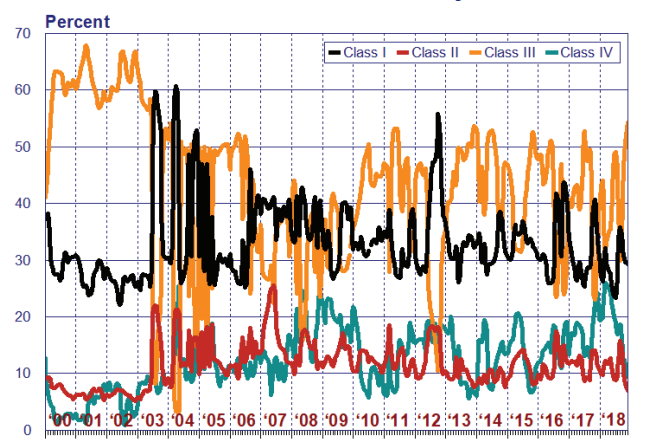
### Avg. Somatic Cell Count In Producer Milk



### Total Producer Milk Pooled

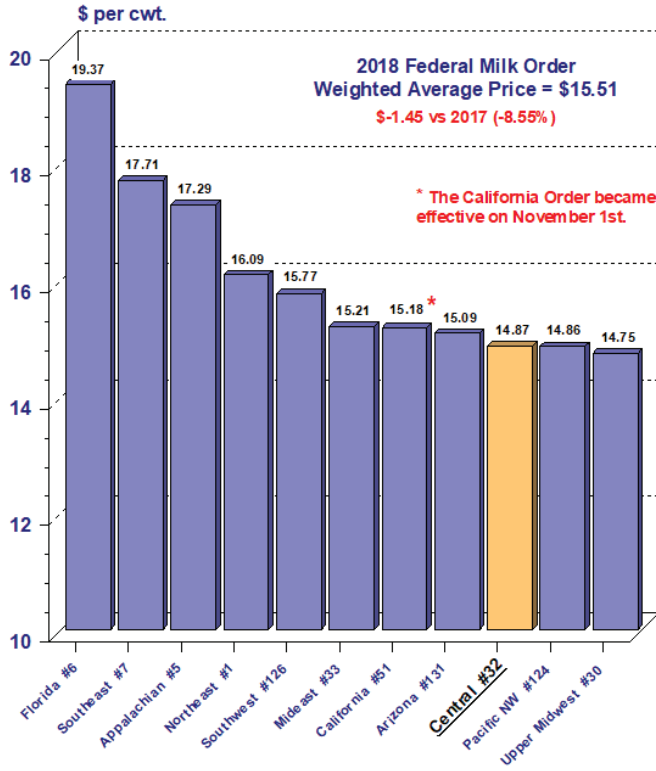


### Utilization of Producer Milk by Class



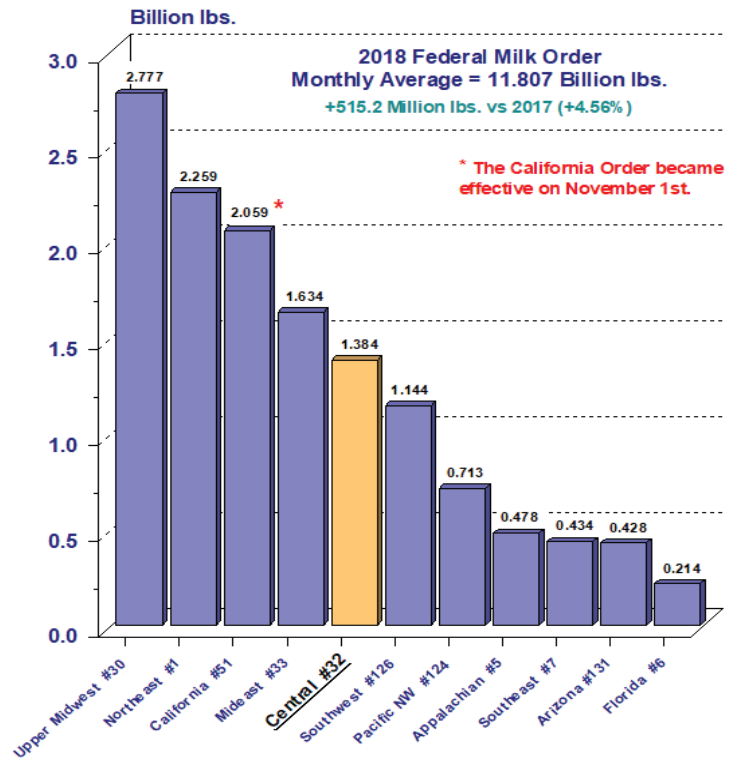
# 2018 Statistical Uniform Prices

## Weighted Average Prices By Federal Milk Order



# 2018 Producer Receipts

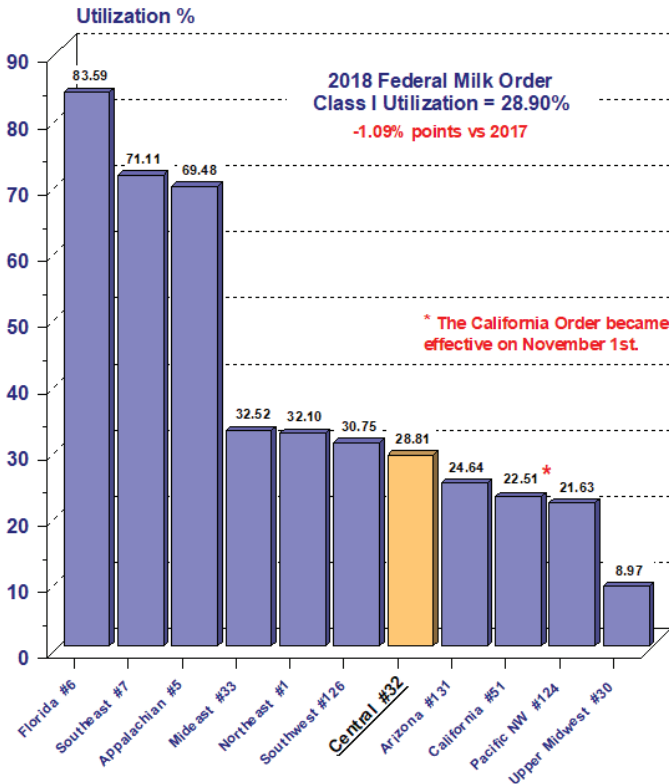
## Monthly Average By Federal Milk Order



Federal Order Base Pricing Points: Northeast - Boston, MA; Appalachian - Charlotte, NC; Florida - Tampa, FL; Southeast - Atlanta, GA; Upper Midwest - Chicago, IL; Central - Kansas City, MO; Mideast - Cleveland, OH; Pacific Northwest - Seattle, WA; Southwest - Dallas, TX; Arizona - Phoenix, AZ.

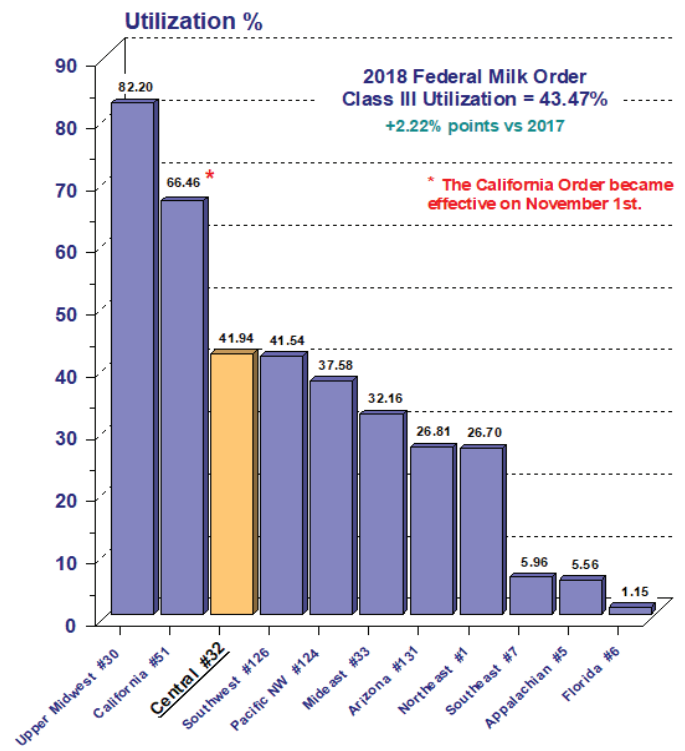
# 2018 Class I Utilizations

## By Federal Milk Order



# 2018 Class III Utilizations

## By Federal Milk Order





**United States  
Department of  
Agriculture**

FIRST CLASS  
U.S. POSTAGE  
PAID  
OLATHE, KS  
PERMIT NO. 377

**FEDERAL MILK MARKET ADMINISTRATOR**  
P.O. BOX 14650  
SHAWNEE MISSION, KANSAS 66285-4650

**FIRST CLASS**

Website: [www.fmmacentral.com](http://www.fmmacentral.com)  
E-mail: [market.administrator@fmmacentral.com](mailto:market.administrator@fmmacentral.com)  
Phone: 913-495-9300

	-- Wtd Avg -- Statistical Uniform Price		-- Wtd Avg -- Producer Price Differential		-- Wtd Avg -- Class I Utilization	
	<u>2018</u>	<u>2017</u>	<u>2018</u>	<u>2017</u>	<u>2018</u>	<u>2017</u>
Northeast	16.09	17.43	1.47	1.27	32.10	32.12
Appalachian	17.29	18.79	-----	-----	69.48	68.98
Florida	19.37	20.92	-----	-----	83.59	83.33
Southeast	17.71	19.13	-----	-----	71.11	69.10
Upper Midwest	14.75	16.28	0.17	0.14	8.97	10.04
<b>Central</b>	<b>14.87</b>	<b>16.35</b>	<b>0.29</b>	<b>0.21</b>	<b>28.81</b>	<b>30.48</b>
Mideast	15.21	16.56	0.60	0.41	32.52	31.77
California	15.18		1.06		22.51	
Pacific Northwest	14.86	16.18	0.25	0.02	21.63	24.69
Southwest	15.77	17.16	1.18	1.04	30.75	32.21
Arizona	15.09	16.39	-----	-----	24.64	25.35

The U.S. Department of Agriculture (USDA) prohibits discrimination in all its programs and activities on the basis of race, color, national origin, age, disability, and where applicable, sex (including gender identity and expression), marital status, familial status, parental status, religion, sexual orientation, political beliefs, genetic information, reprisal, or because all or part of an individual's income is derived from any public assistance program. (Not all prohibited bases apply to all programs.) Persons with disabilities who require alternative means for communication of program information (Braille, large print, audiotape, etc.) should contact USDA's TARGET Center at (202) 720-2600 (voice and TDD).

To file a complaint of discrimination, write to USDA, Assistant Secretary for Civil Rights, Office of the Assistant Secretary for Civil Rights, 1400 Independence Avenue, S.W., Stop 9410, Washington, D.C. 20250-9410. Or call toll-free at (866) 632-9992 (English) or (800) 877-8339 (TDD) or (866) 377-8642 (English Federal-relay) or (800) 845-6136 (Spanish Federal-relay). USDA is an equal opportunity provider and employer.