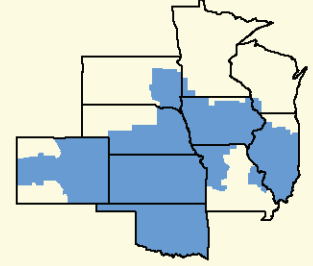


# Bulletin

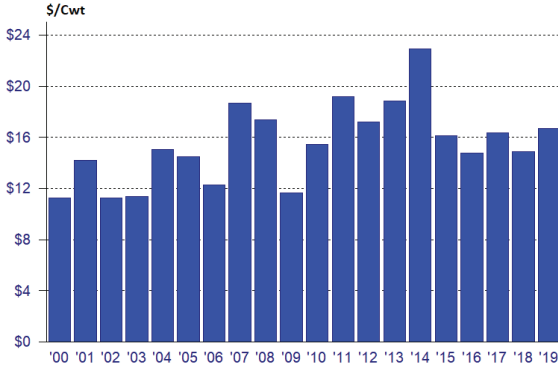


Facilitating the efficient marketing of milk and dairy products.



**CENTRAL MARKETING AREA**

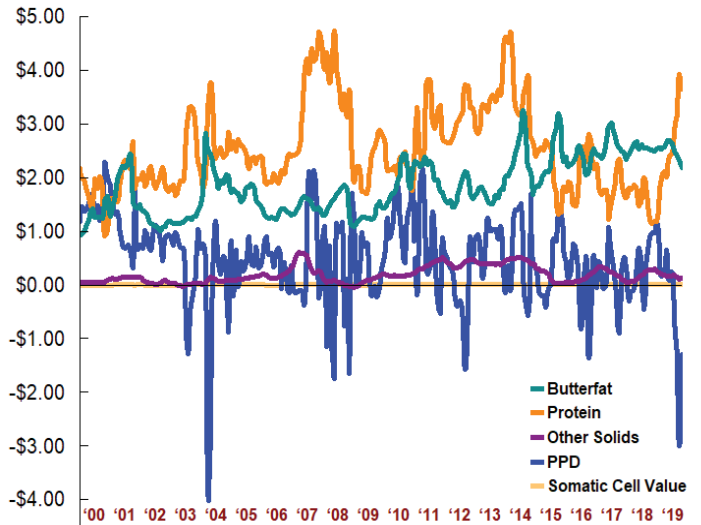
## Statistical Uniform Price



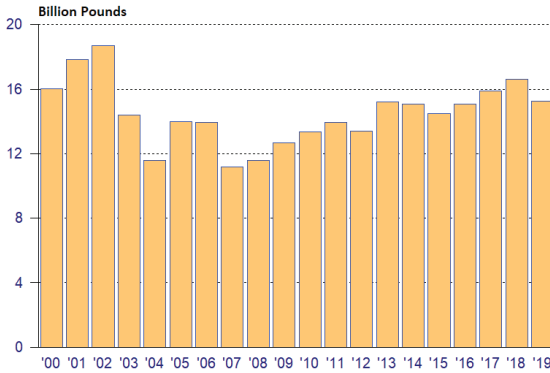
## Central Order Data: How Did 2019 Measure Up?

The weighted average statistical uniform price for the Central Order increased this year registering \$16.70 per cwt., a 12.31% increase from 2018's \$14.87 average. Since implementation of Federal Order reform in 2000, the annual statistical uniform price has averaged \$15.51, ranging from a low of \$11.24 in 2002 to the all time high of \$22.90 in 2014. The 2019 weighted average Producer Price Differential (PPD) of \$0.01 per cwt. is a post reform low, \$0.28 less than the 2018 average and \$0.54 less than the post-reform average of \$0.55 per cwt.

## Central Order Component Values



## Producer Milk



Producer marketings on the Central Order averaged 1.272 billion pounds per month during 2019, for a total of 15.260 billion pounds. This total is down 8.10% from 2018, and is 18.40% less than the record 18.700 billion pounds marketed during 2002. Central Order marketings were the 5th highest among all federal orders in 2019, trailing the Upper Midwest, Northeast, California, and Mideast Orders. The top right graph on page 3 depicts producer marketing data by order.

5th highest among all federal orders in 2019, trailing the Upper Midwest, Northeast, California, and Mideast Orders. The top right graph on page 3 depicts producer marketing data by order.

	Butterfat	Protein	Other Solids	PPD	Statistical Uniform
2000	\$1.2522	\$1.6938	\$0.0509	\$1.54	\$11.28
2001	1.8480	1.9613	0.1343	1.05	14.21
2002	1.1928	1.9735	0.0593	0.84	11.24
2003	1.2099	2.3770	0.0129	0.51	11.40
2004	2.0507	2.6035	0.0751	0.09	15.06
2005	1.7105	2.4602	0.1228	0.47	14.47
2006	1.3252	2.0912	0.1746	0.46	12.26
2007	1.4693	3.5121	0.4201	0.63	18.67
2008	1.5668	3.8898	0.0555	0.02	17.39
2009	1.2571	2.2087	0.0612	0.45	11.68
2010	1.8535	2.3091	0.1777	1.05	15.48
2011	2.1535	2.9663	0.3434	0.82	19.19
2012	1.7230	3.0426	0.4063	0.10	17.21
2013	1.6634	3.3010	0.4029	0.83	18.82
2014	2.3792	3.7935	0.4684	0.61	22.90
2015	2.2954	2.2393	0.1867	0.37	16.13
2016	2.3084	2.0955	0.0910	0.14	14.79
2017	2.6143	1.8682	0.2519	0.21	16.35
2018	2.5258	1.6497	0.1474	0.29	14.87
<b>2019</b>	<b>2.5088</b>	<b>2.3796</b>	<b>0.1862</b>	<b>0.01</b>	<b>16.70</b>
%Change	-0.67	+44.24	+26.32	-96.55	+12.31

Monthly component prices for the last 20 years are depicted by graphs on page 2. Compared with the previous year, the 2019 average butterfat price decreased by 0.67%, the average protein price increased by 44.24%, and the average other solids price increased by 26.32%. Average Central Order producer component prices, along with PPD and statistical uniform prices are detailed in the table on this page.

Class I utilization for the Central Order was 30.18% of producer receipts in 2019. The lowest annual utilization was recorded in 2002 at 26.02%, while Class I utilization peaked in 2007 at 38.82%. Central Order Class I utilization during 2019 ranked 7th among the 11 federal milk orders. Class I utilization percentages for all orders are depicted in the lower left graph on page 3.

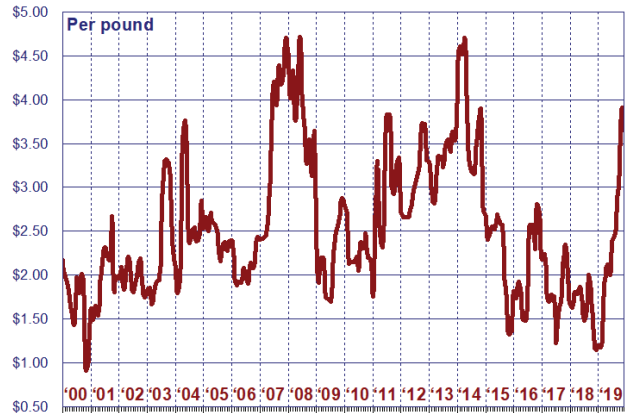
The graphics on page 2 depict 2000 through 2018 monthly prices and marketing data for the Central Order. Page 3 graphics illustrate the Central Order's relation to the other 10 orders regarding the statistical uniform price, producer receipts, and Class I and Class III utilization percentages for 2019. Central Order data is highlighted in each graphic.

# Central Order

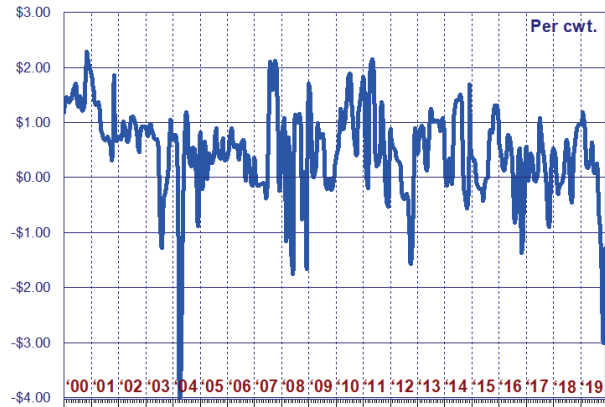
### Statistical Uniform Price



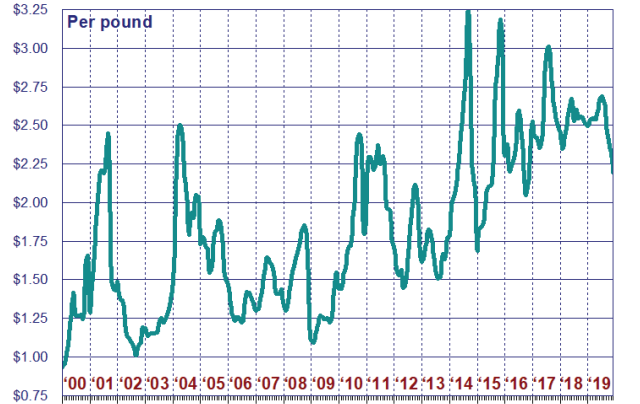
### Producer Protein Price



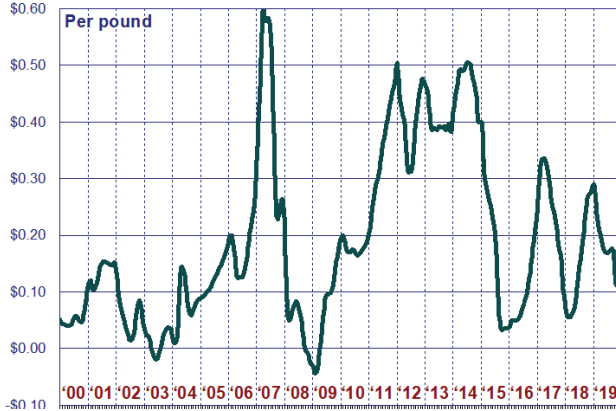
### Producer Price Differential



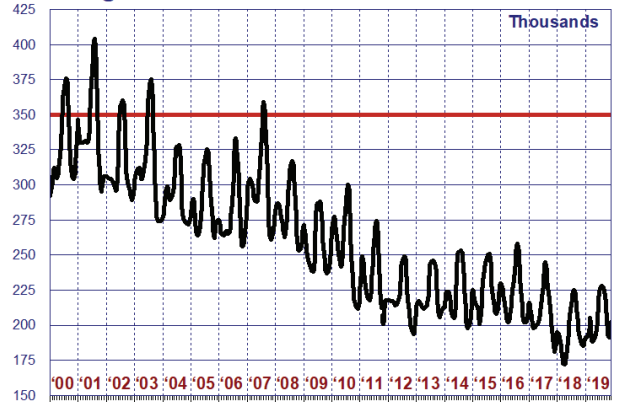
### Producer Butterfat Price



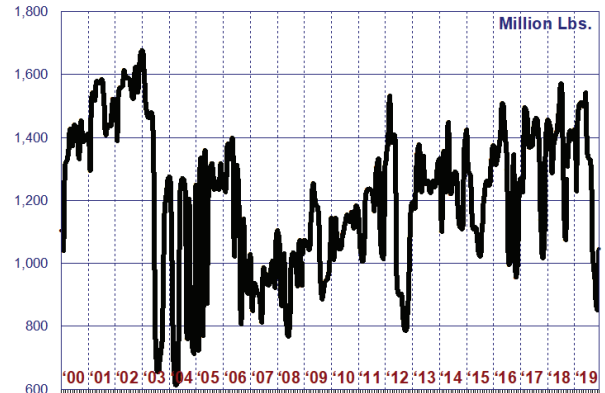
### Producer Other Solids Price



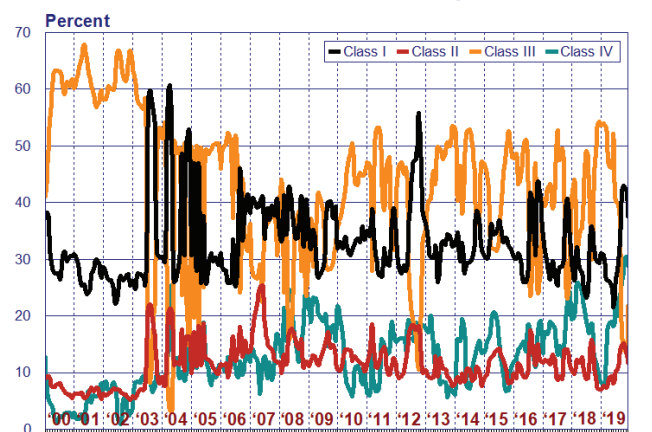
### Avg. Somatic Cell Count In Producer Milk



### Total Producer Milk Pooled

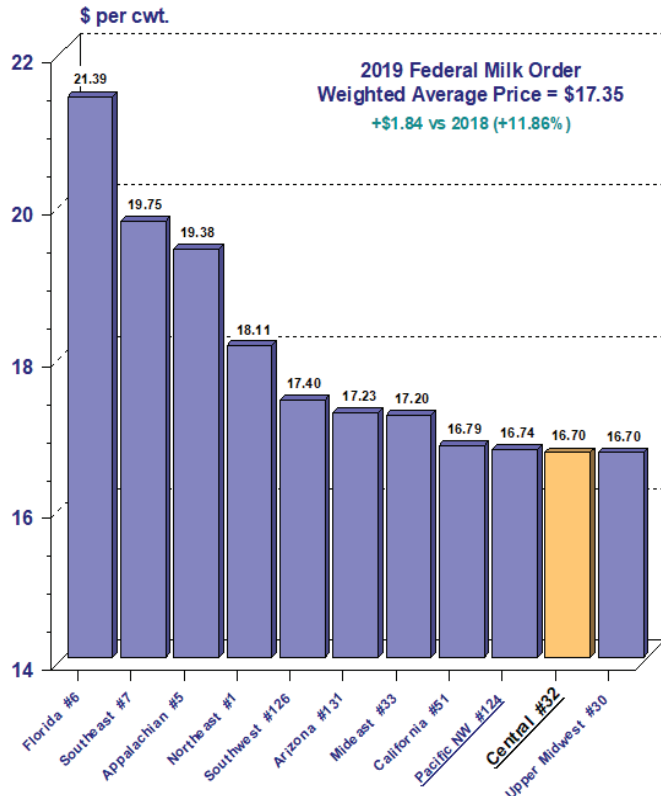


### Utilization of Producer Milk by Class



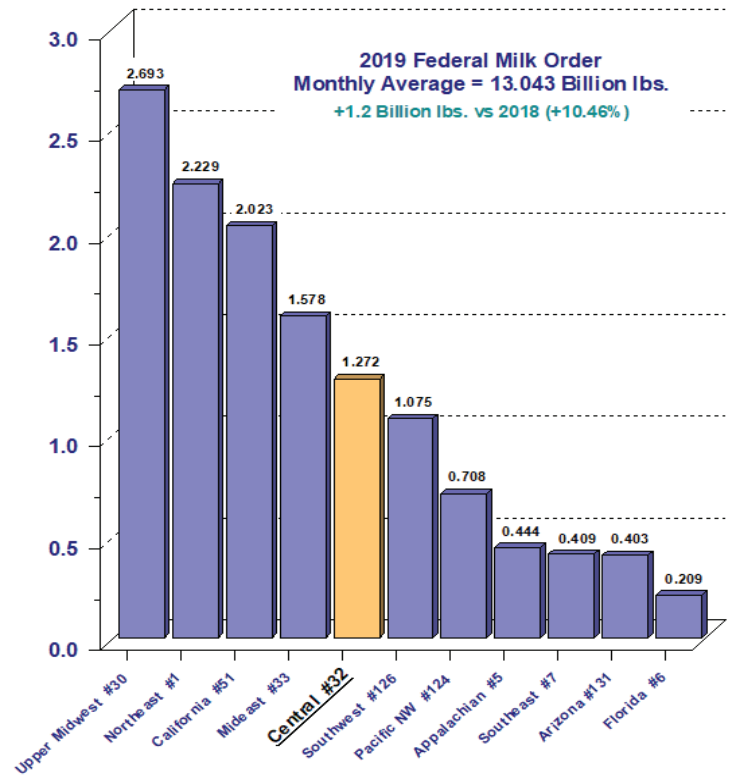
# 2019 Statistical Uniform Prices

## Weighted Average Prices By Federal Milk Order



# 2019 Producer Receipts

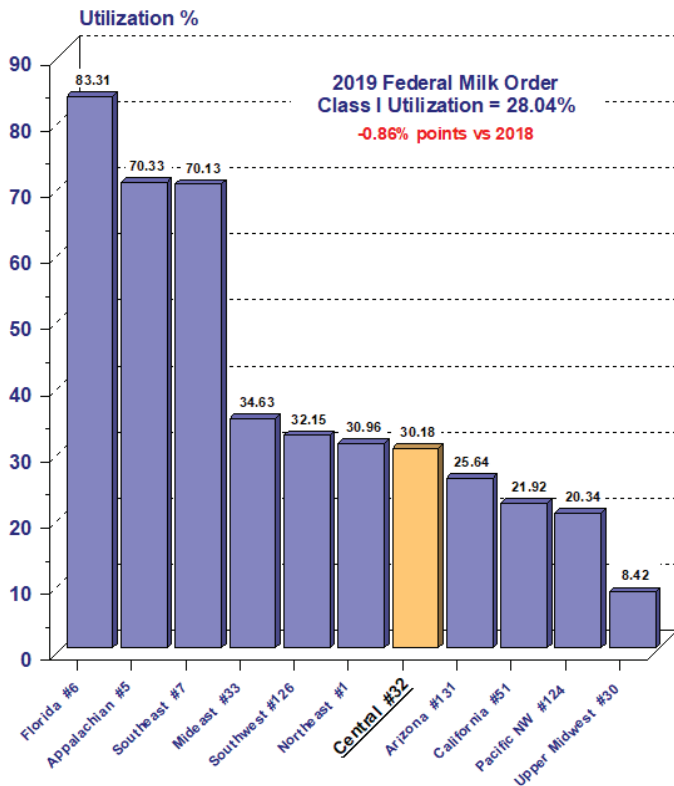
## Monthly Average By Federal Milk Order



Federal Order Base Pricing Points: Northeast - Boston, MA; Appalachian - Charlotte, NC; Florida - Tampa, FL; Southeast - Atlanta, GA; Upper Midwest - Chicago, IL; Central - Kansas City, MO; Midwest - Cleveland, OH; Pacific Northwest - Seattle, WA; Southwest - Dallas, TX; Arizona - Phoenix, AZ; California - Los Angeles, CA.

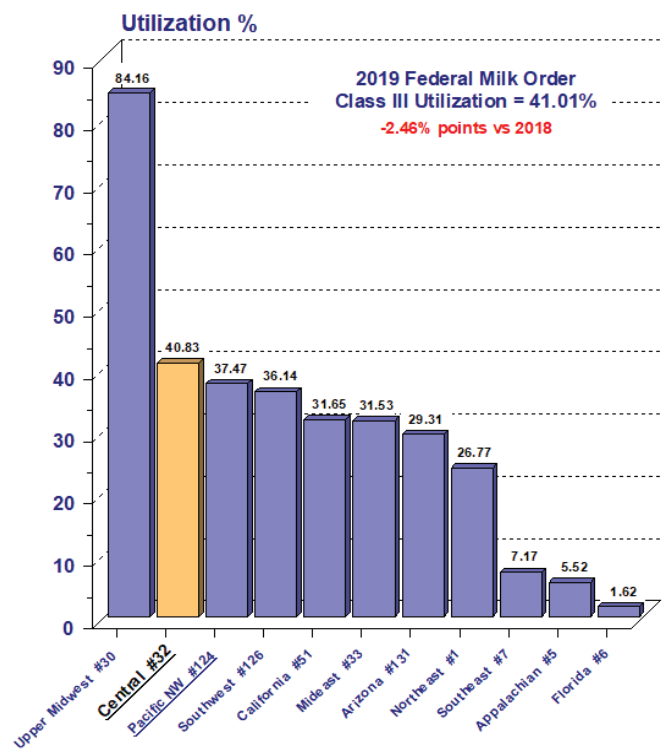
# 2019 Class I Utilizations

## By Federal Milk Order



# 2019 Class III Utilizations

## By Federal Milk Order





**United States  
Department of  
Agriculture**

FIRST CLASS  
U.S. POSTAGE  
PAID  
OLATHE, KS  
PERMIT NO. 377

**FEDERAL MILK MARKET ADMINISTRATOR**  
P.O. BOX 14650  
SHAWNEE MISSION, KANSAS 66285-4650

**FIRST CLASS**

Website: [www.fmmacentral.com](http://www.fmmacentral.com)  
E-mail: [market.administrator@fmmacentral.com](mailto:market.administrator@fmmacentral.com)  
Phone: 913-495-9300

	-- Wtd Avg --		-- Wtd Avg --		-- Wtd Avg --	
	Statistical Uniform Price		Producer Price Differential		Class I Utilization	
	<u>2019</u>	<u>2018</u>	<u>2019</u>	<u>2018</u>	<u>2019</u>	<u>2018</u>
Northeast	18.11	16.09	1.18	1.47	30.96	32.10
Appalachian	19.38	17.29	-----	-----	70.33	69.48
Florida	21.39	19.37	-----	-----	83.31	83.59
Southeast	19.75	17.71	-----	-----	70.13	71.11
Upper Midwest	16.70	14.75	0.07	0.17	8.42	8.97
<b>Central</b>	<b>16.70</b>	<b>14.87</b>	<b>0.01</b>	<b>0.29</b>	<b>30.18</b>	<b>28.81</b>
Mideast	17.20	15.21	0.31	0.60	34.63	32.52
California	16.79	15.18	-0.04	1.06	21.92	22.51
Pacific Northwest	16.74	14.86	-0.13	0.25	20.34	21.63
Southwest	17.40	15.77	0.70	1.18	32.15	30.75
Arizona	17.23	15.09	-----	-----	25.64	24.64

The U.S. Department of Agriculture (USDA) prohibits discrimination in all its programs and activities on the basis of race, color, national origin, age, disability, and where applicable, sex (including gender identity and expression), marital status, familial status, parental status, religion, sexual orientation, political beliefs, genetic information, reprisal, or because all or part of an individual's income is derived from any public assistance program. (Not all prohibited bases apply to all programs.) Persons with disabilities who require alternative means for communication of program information (Braille, large print, audiotape, etc.) should contact USDA's TARGET Center at (202) 720-2600 (voice and TDD).

To file a complaint of discrimination, write to USDA, Assistant Secretary for Civil Rights, Office of the Assistant Secretary for Civil Rights, 1400 Independence Avenue, S.W., Stop 9410, Washington, D.C. 20250-9410. Or call toll-free at (866) 632-9992 (English) or (800) 877-8339 (TDD) or (866) 377-8642 (English Federal-relay) or (800) 845-6136 (Spanish Federal-relay). USDA is an equal opportunity provider and employer.