

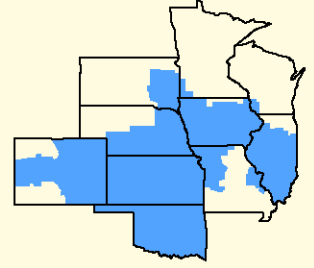
DECEMBER 2023

Marketing Service



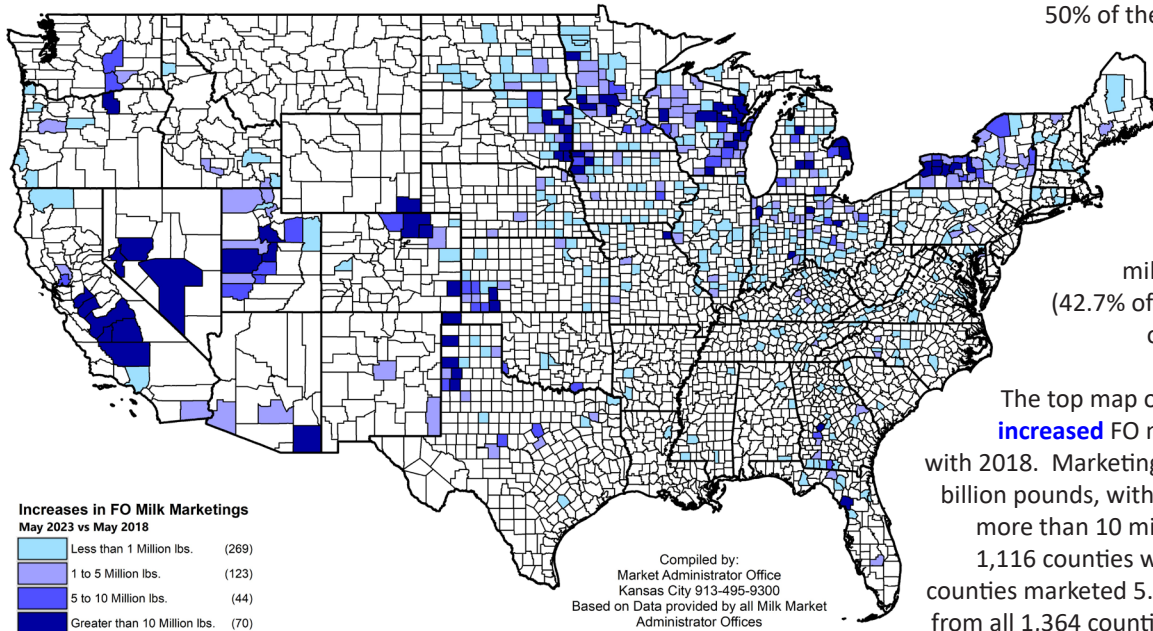
Bulletin

Facilitating the efficient
marketing of milk and
dairy products.



CENTRAL MARKETING AREA

506 Counties Increased Marketings

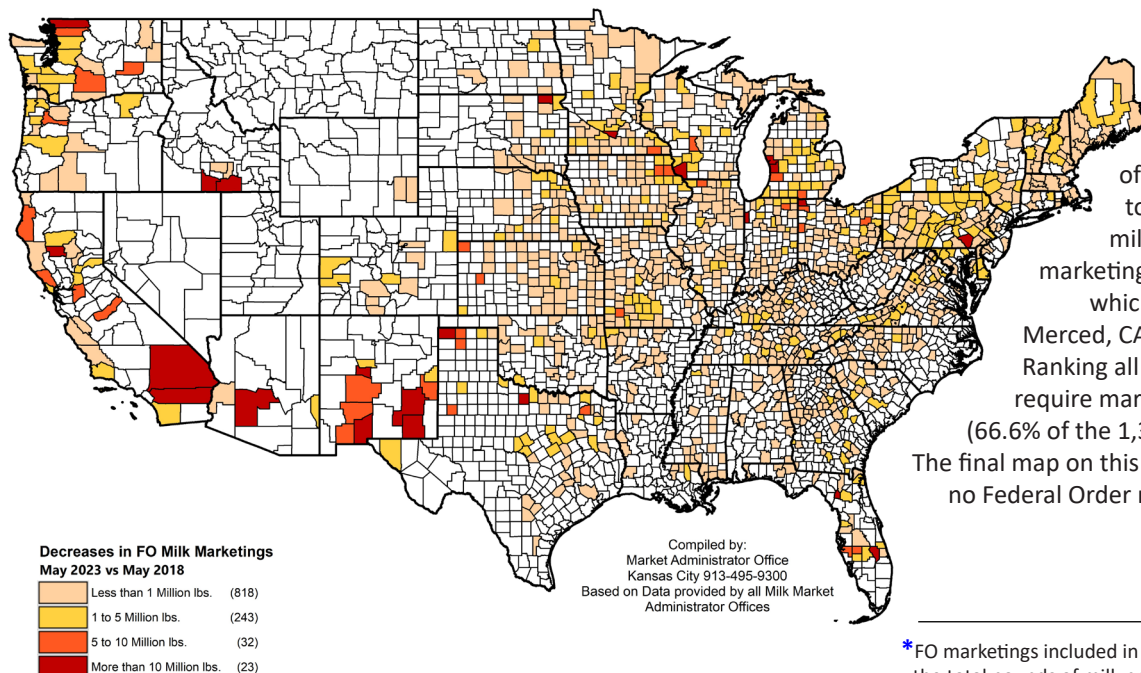


The origin of milk marketings remains highly concentrated, with 54 counties accounting for 50% of the May 2023 Federal Order (FO) total.*

These 54 counties represent only 4.0% of the 1,364 counties with FO milk marketings, and this number is **down** from 57 counties that comprised 50% of the total in May 2018. While each of the 54 largest counties marketed more than 70.337 million pounds, there were 583 counties (42.7% of the FO total) that marketed less than one million pounds each in May 2023.

The top map on this page depicts 506 counties with **increased** FO milk marketings, comparing May 2023 with 2018. Marketings from these counties totaled 12.261 billion pounds, with 70 counties increasing marketings by more than 10 million pounds. The map below depicts 1,116 counties with **decreased** marketings, and these counties marketed 5.377 billion pounds in May 2023. Milk from all 1,364 counties with FO marketings totaled 17.639 billion pounds, an **increase** of 802 million pounds (+4.8%) compared with May 2018.

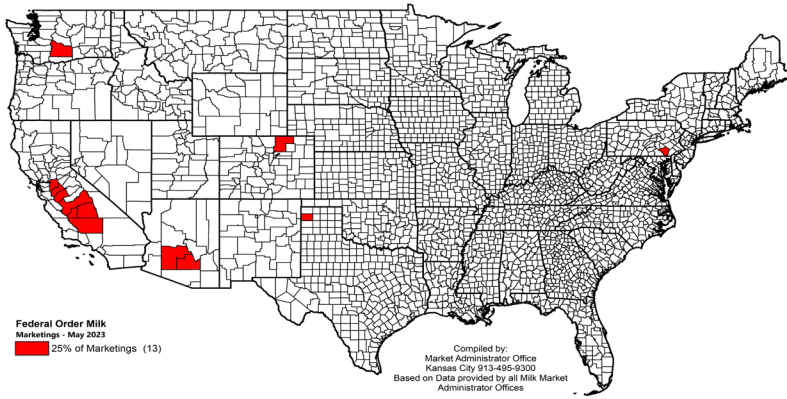
1,116 Counties Decreased Marketings



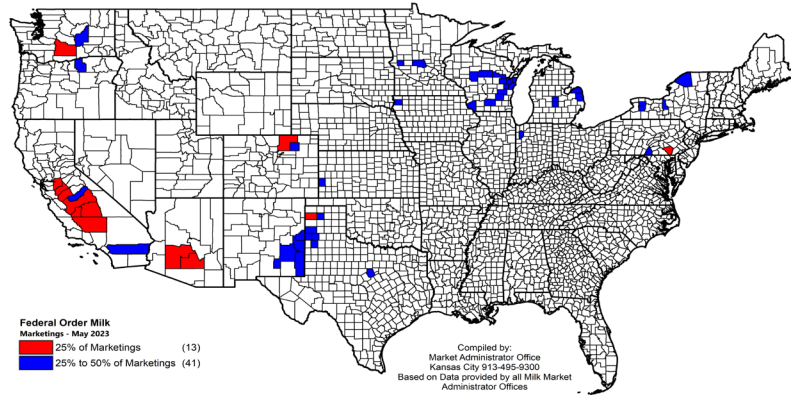
The maps on the next two pages break out the milk marketings by quartiles and show an overall picture of marketings from May 2023. Thirteen counties marketed 25% of the milk totaling to 4.510 billion pounds, an increase of 297 million pounds (+7.1%) compared to May 2018. Tulare, CA produces more milk than any other county in the country marketing 987 million pounds in just one month which is also 387 million pounds more than Merced, CA the second highest producing county. Ranking all the counties in ascending order would require marketings from the smallest 909 counties (66.6% of the 1,364 total) to equal Tulare's production. The final map on this publication shows 1,746 counties with no Federal Order marketings an increase of 219 counties (+16.6%) compared with May 2018.

* FO marketings included in this analysis represent approximately 89% of the total pounds of milk produced in the U.S. in May 2023.

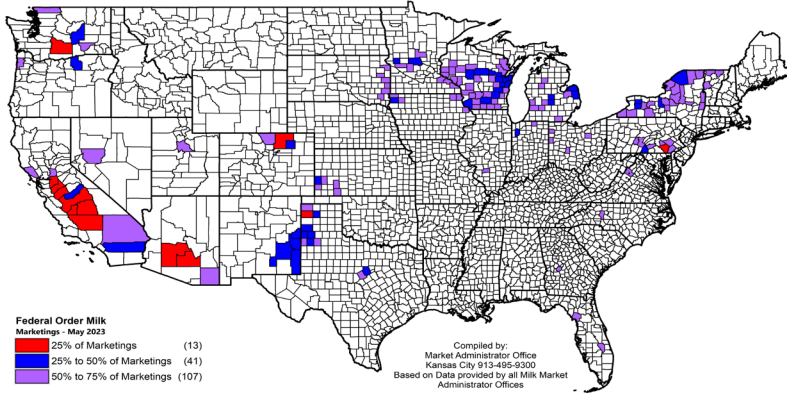
**13 Counties Marketed 25% of All
Federal Order Milk during May 2023**



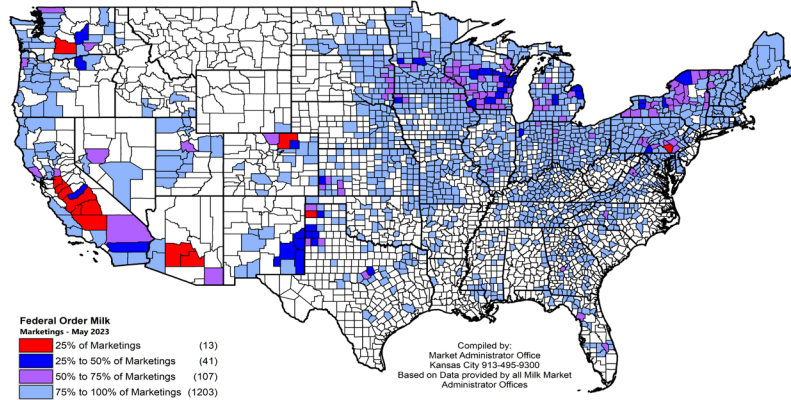
**54 Counties Marketed 50% of All
Federal Order Milk during May 2023**



**161 Counties Marketed 75% of All
Federal Order Milk during May 2023**



**1,364 Counties Marketed 100% of All
Federal Order Milk during May 2023**

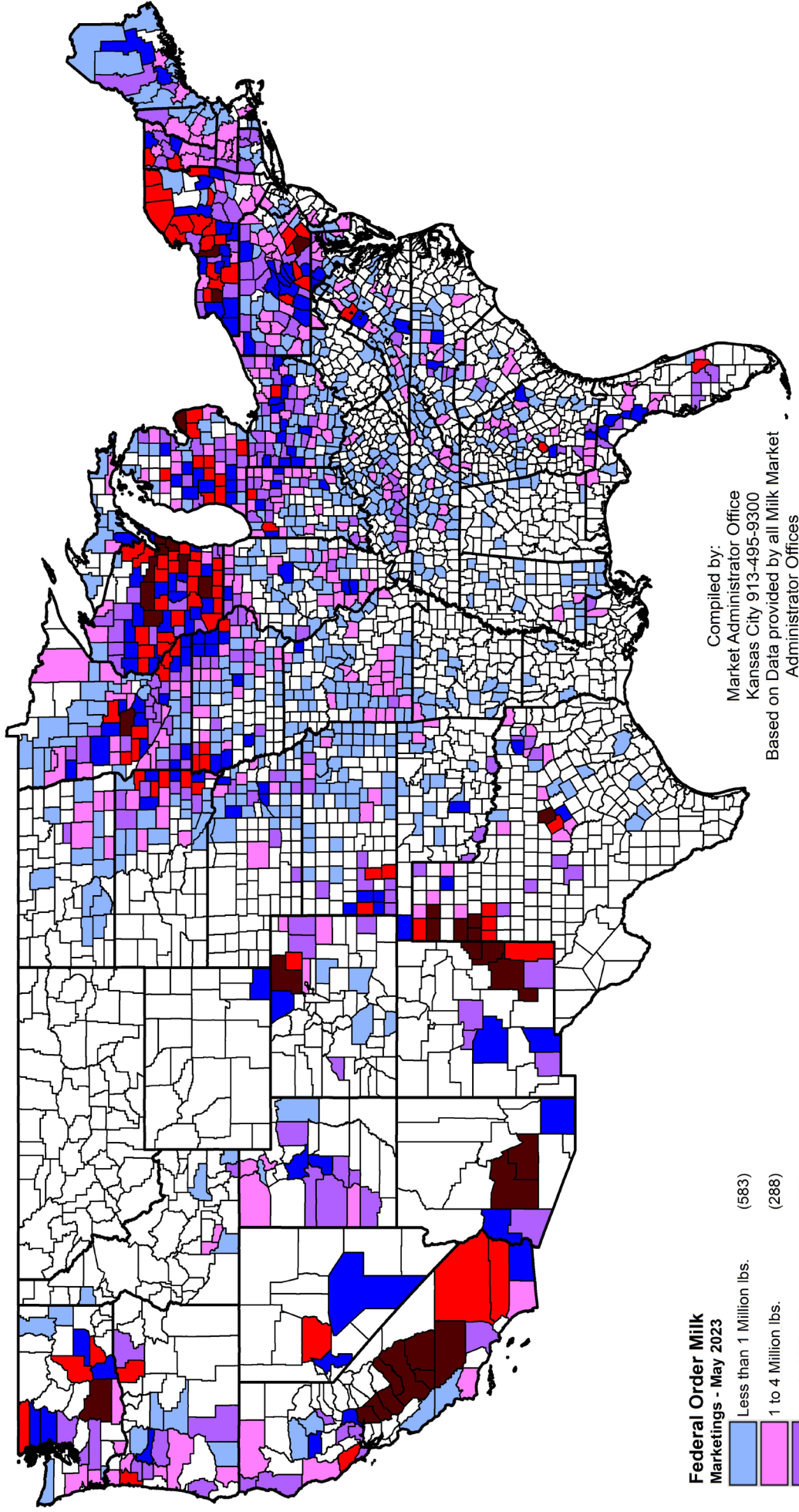


Thirteen Counties Marketed 25% Of The Federal Order Milk During May 2023

	May 2023	
	<u>May '23 Mktgs</u>	<u>% of FO Total</u>
Tulare, CA	986,585,085	5.59
Merced, CA	599,285,471	3.40
Kings, CA	405,916,175	2.30
Kern, CA	365,122,286	2.07
Stanislaus, CA	355,862,865	2.02
Weld, CO	290,197,825	1.65
Fresno, CA	259,706,549	1.47
Hartley, TX	246,182,077	1.40
Yakima, WA	229,382,327	1.30
Maricopa, AZ	200,757,386	1.14
San Joaquin, CA	197,445,360	1.12
Lancaster, PA	189,966,112	1.08
Pinal, AZ	183,676,154	1.04
13-County Total	4,510,085,672	25.57
FO Total	17,639,078,049	

Federal Order Milk Marketings by County

May 2023





**United States
Department of
Agriculture**

FIRST CLASS
U.S. POSTAGE
PAID
OLATHE, KS
PERMIT NO. 377

FEDERAL MILK MARKET ADMINISTRATOR

P.O. BOX 14650

SHAWNEE MISSION, KANSAS 66285-4650

Website: www.fmmacentral.com

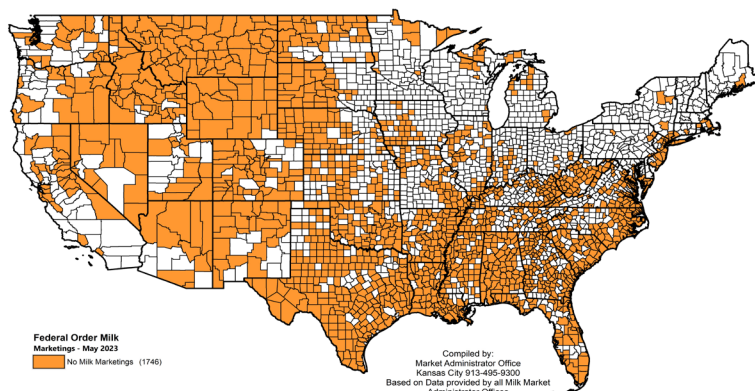
E-mail: market.administrator@fmmacentral.com

Phone: 913-495-9300

FIRST CLASS

	Statistical Uniform Price		Producer Price Differential		Class I Utilization	
	Nov '23	Oct '23	Nov '23	Oct '23	Nov '23	Oct '23
Northeast	20.74	21.20	3.59	4.36	30.80	30.08
Appalachian	22.19	23.05	-----	-----	72.15	71.69
Florida	24.08	24.99	-----	-----	81.84	81.53
Southeast	22.94	23.64	-----	-----	85.87	77.02
Upper Midwest	17.48	17.28	0.33	0.21	6.53	6.26
Central	18.74	19.03	1.59	2.19	30.58	29.74
Mideast	19.27	19.66	2.12	2.82	40.28	39.58
California	18.57	18.60	1.42	1.76	20.52	20.04
Pacific Northwest	18.97	19.25	1.82	2.41	23.20	22.52
Southwest	19.34	19.52	2.19	2.68	31.83	30.20
Arizona	20.22	20.56	-----	-----	24.93	27.13

**Counties with No Federal Order Milk Marketings
May 2023**



The U.S. Department of Agriculture (USDA) prohibits discrimination in all its programs and activities on the basis of race, color, national origin, age, disability, and where applicable, sex (including gender identity and expression), marital status, familial status, parental status, religion, sexual orientation, political beliefs, genetic information, reprisal, or because all or part of an individual's income is derived from any public assistance program. (Not all prohibited bases apply to all programs.) Persons with disabilities who require alternative means for communication of program information (Braille, large print, audiotape, etc.) should contact USDA's TARGET Center at (202) 720-2600 (voice and TDD).

To file a complaint of discrimination, write to USDA, Assistant Secretary for Civil Rights, Office of the Assistant Secretary for Civil Rights, 1400 Independence Avenue, S.W., Stop 9410, Washington, D.C. 20250-9410. Or call toll-free at (866) 632-9992 (English) or (800) 877-8339 (TDD) or (866) 377-8642 (English Federal-relay) or (800) 845-6136 (Spanish Federal-relay). USDA is an equal opportunity provider and employer.